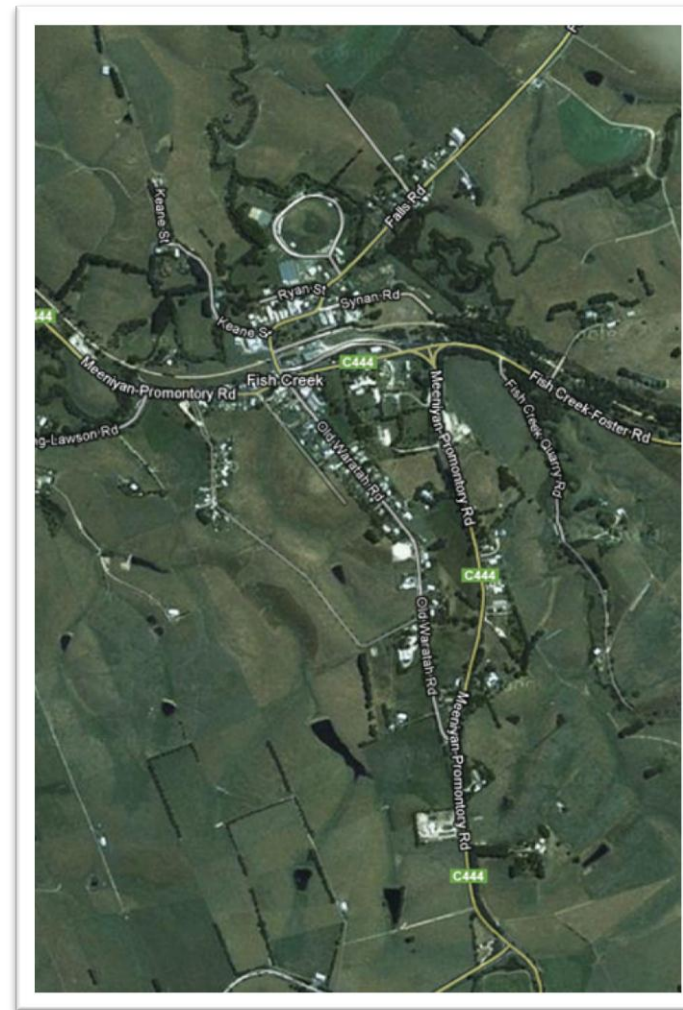
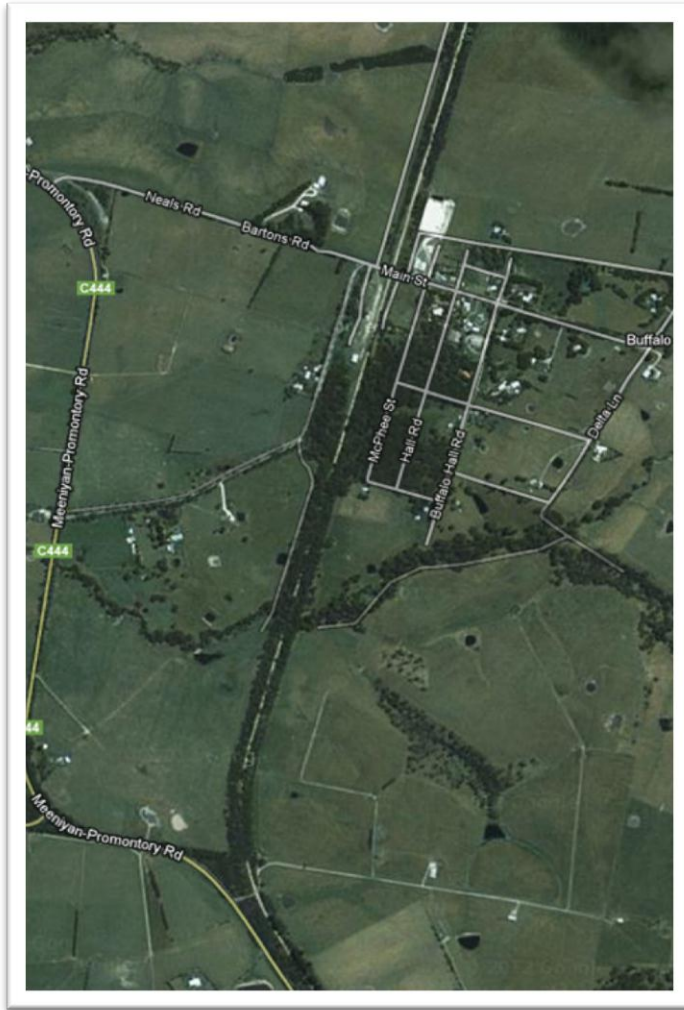


Community Directions

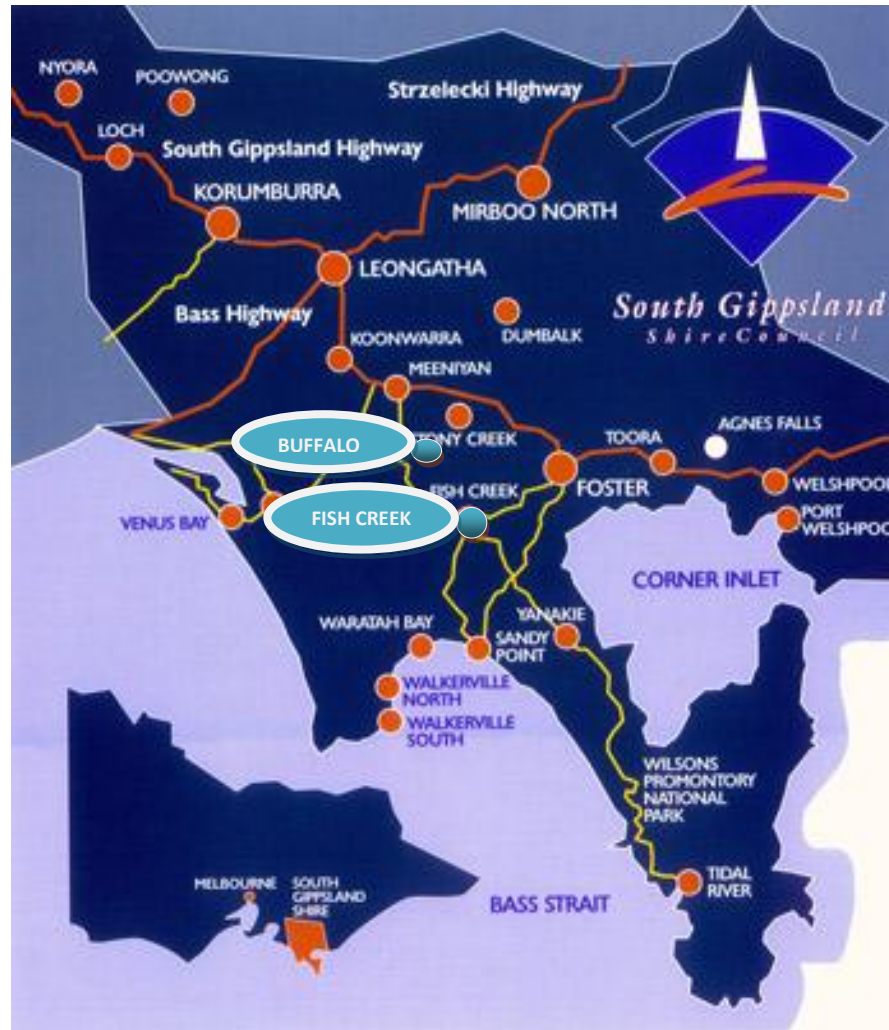
Buffalo & Fish Creek Community Plan



Where are we?



Lifestyle



History

Recreation



Natural Beauty



About us



Buffalo The town was originally settled as a part of the rail-line link between Foster and Leongatha during the late 1800s. The town plans are available. Because of transport changes (the advent of the motor-car) the township did not progress beyond being a small village. The local area is supported by many local farmers (including dairy, sheep, goats, and beef) as well as local people that have moved into the area but work elsewhere, and retirees. The main shopping area for many years included Matthews

Feed and Grain Store, a general store and post office, a telephone exchange and a primary school. Matthews Feed and Grain has now been taken over by Pivot. The general store and post office are still in business. The phone exchange is now automated. The primary school is now closed and privately owned.

The township was serviced by the Great Southern Rail Line until the early 1990s: first as both passenger and freight. By approximately 1985, it was only used for freight (fertiliser, etc., for Matthews). The railway line tracks have now been removed and the land is now part of the Great Southern Rail Trail. The original station platform remains and the Management Committee of the Rail Trail intends to have picnic facilities available. The general store became well-known in the 1950s as the shop the "Lady of the Swamp" (Tullaree – Margaret Clement who disappeared without trace) frequented. The general store remained in operation by the Neale family for many years. (Wikipedia)



Fish Creek Named for the blackfish that swam in the adjacent creek, Fish Creek was established in 1984. The earliest settlers (of Irish, English and Scottish descent) cleared land and established farms, with the first industries including timber, beef cattle and airy products. In 1982 the railway line through Fish Creek was completed. Up to three good trains travelled between Melbourne and Yarram daily, including special trains for livestock and phosphate, and butter was consigned to other townships by rail. A daily passenger train also served the community. After WW2, Fish Creek benefited from an influx of families from Europe. Italian families joined a family member who had moved to the area in the 1920s, and families from Holland, Germany and Hungary also established themselves as farmers in Fish Creek. The South Gippsland line, also known as the Great Southern Railway line stopped taking passengers in 1981, and the line was completely dismantled south of Leongatha in 1994. The Great Southern Rail Trail was established in 1998, following the original path of the railway line. The trail has been designed for a multitude of users and is suitable for walking, cycling, and horse-riders. The trail travels through picturesque dairy country, and straight through the centre of the Fish Creek townships. Today Fish Creek is still home to a thriving dairy industry, and is also known for its strong arts community. Fish Creek is home to four galleries as a testament to the strong arts community. The galleries range from artists' own work in various mediums, to monthly contemporary exhibitions by local and Melbourne artists. Art is everywhere in Fish Creek, a large mullet sculpture balances on the roof of the Hotel, decorative signs direct you to the town centre, murals and seats are dotted around the town. The town also hosts Fish Creek Art Group – a collective of painters, Prom Coast Arts – a group of multi discipline artists who coordinate the Great Southern Portrait Prize and Adam Murfitt Memorial Art Auction, and Prom Coast Film Society. Fish Creek Organic Garden operates from the platform of the former railway station, adjacent to the Great Southern Rail Trail. The sporting hub of fish Creek is Terrill Park, home to football, Netball, Cricket, Tennis and Bowls, as well as the Fish Creek Cubs and Scouts. Fish Creek CFA is a volunteer fire brigade with Road Accident Rescue capabilities and the Fish Creek branch of the Country Women's Association (CWA) is also an active volunteer organisation.



Who are we?

Population Profile

Key statistics (summary statistics)	South East Coastal District						Change 2001 to 2006
	2006			2001			
Usual Residence data	number	%	South Gippsland Shire %	number	%	South Gippsland Shire %	
Usual resident population							
Total population (b)	5,377	100.0	100.0	5,326	100.0	100.0	50
Males (b)	2,672	49.7	49.4	2,646	49.7	49.4	26
Females (b)	2,705	50.3	50.6	2,680	50.3	50.6	24
Population characteristics							
Indigenous population	47	0.9	0.5	37	0.7	0.6	9
Australian born	4,347	80.8	83.1	4,376	82.2	84.0	-29
Overseas born	600	11.2	10.9	569	10.7	10.6	32
Australian citizens	4,791	89.1	91.2	4,837	90.8	92.4	-46
Australian citizens aged 18+	3,698	68.8	68.5	3,619	67.9	67.4	79
Age structure							
Infants 0 to 4 years	255	4.7	5.6	288	5.4	6.0	-33
Children 5 to 17 years	1,007	18.7	18.7	1,040	19.5	20.6	-32
Adults 18 to 64 years	2,964	55.1	57.7	3,051	57.3	57.4	-87
Mature adults 65 to 84 years	1,061	19.7	15.9	814	15.3	14.2	247
Senior citizens 85 years and over	103	1.9	2.2	99	1.9	1.7	4
Average household size (persons)	2.28	--	--	2.33	--	--	-0.05

Table Source: Australian Bureau of Statistics, Census of Population and Housing, 2006, and 2001.

The 'Key statistics' table presented here contains summary statistics for South East Coastal District. By default the table displays 2001 and 2006 data as both absolute numbers and percentages (where applicable), along with the change in number between these years.

For a description of the South East Coastal District please see next page.

NOTE: Table totals may not equate with other similar tables due to **randomisation** of small numbers. Please refer to the **specific data notes** for more information.

Who are we?

South East Coastal District is a rural and holiday area which includes the townships of Fish Creek, Foster, Port Welshpool, Sandy Point, Toora and Welshpool. South East Coastal District includes the localities of Agnes, Bennison, Binginwarri (part), Fish Creek, Foster, Foster North, Hazel Park, Hedley (part), Mount Best, Port Franklin, Port Welshpool, Sandy Point, Toora, Toora North (part), Walkerville, Waratah Bay, Welshpool, Wilsons Promontory, Wonga, Wonyip, Woorarra East and Yanakie. South East Coastal District is bounded by the localities of Dollar, Woorarra West, Boolarong and Gunyah and Devils Pinch Road in the north, Wellington Shire in the north-east, Bass Strait in the east and south, and the localities of Tarwin Lower, Buffalo and Stony Creek in the west.

Note re updated Census data.

There will be a three-phased release for the 2011 Census data.

Core demographic data items will be available in the first data release (21 June 2012) and others that require more detailed processing will be released as part of the second release (30 October 2012). The supplementary data release, or third release, relates to the dissemination of highly specialised products (such as SEIFA and the Census Sample Files). The third release will begin on 28 March 2013, with products released progressively until the end of 2013. This will finalise all Census data output for the 2011 Census. (from the ABS website)

Who are we?

Buffalo

In the 2006 Census, there were 84 families in Buffalo (Suburb), 41 couples with children, 36 Couple families without children and 7 One Parent families with an overall population of 261.

The median weekly individual income for persons aged 15 years and over who were usual residents was \$443, compared with \$466 in Australia. The median weekly household income was \$900, compared with \$1,027 in Australia. The median weekly family income was \$1,044 compared with \$1,171 in Australia.

There were a total of 132 private dwellings counted in Buffalo (Suburb) 48 were fully owned, 38 being purchased and 16 rented with 0 being not stated. 83 were family households, 14 lone person household and 0 group households.

Of a total labour force of 143 individuals aged over 15 years, there were 84 employed full time, 46 part time & 6 employed away from work. There were 58 people not in the labour force. 0 people were unemployed and 7 did not state their employment status

(Statistics from the 2006 Census)

Fish Creek

In the 2006 Census, there were 201 families in Fish Creek (Suburb), 94 couples with children, 92 Couple families without children, 15 One Parent families and 0 Other families, with an overall district population of 726.

The median weekly individual income for persons aged 15 years and over who were usual residents was \$411, compared with \$470 in Australia. The median weekly household income was \$819, compared with \$1,027 in Australia. The median weekly family income was \$993 compared with \$1,171 in Australia.

There were a total of 437 private dwellings (includes unoccupied private dwellings) counted in Fish Creek (Suburb). Occupied private dwellings numbered at 276. 127 were fully owned, 86 being purchased and 44 rented with 15 being not stated. 201 were family households, 61 lone person household and 3 group households.

Of a total labour force of 362 individuals aged over 15 years, there were 203 employed full time, 114 part time & 17 employed away from work. There were 179 people not in the labour force. 10 people were unemployed and 18 did not state their employment status

(Statistics from the 2006 Census)

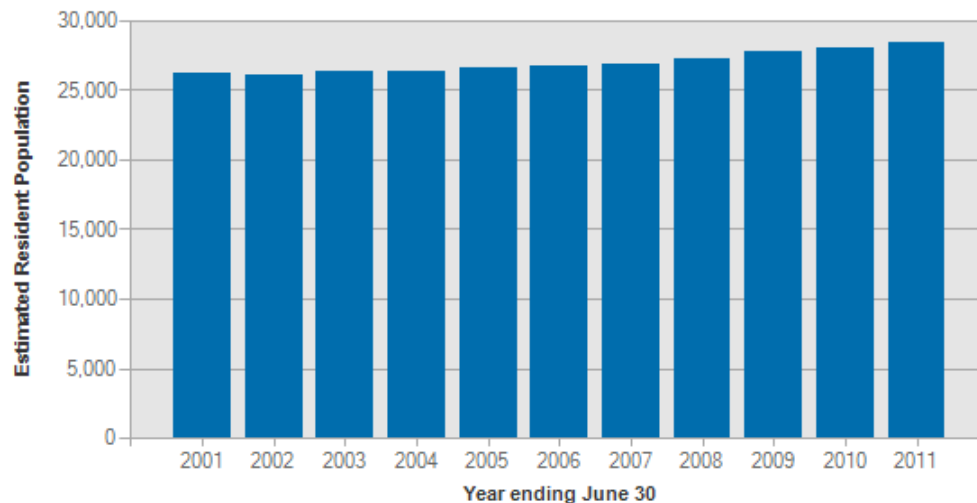
South Gippsland Profile

South Gippsland - Shire wide statistics

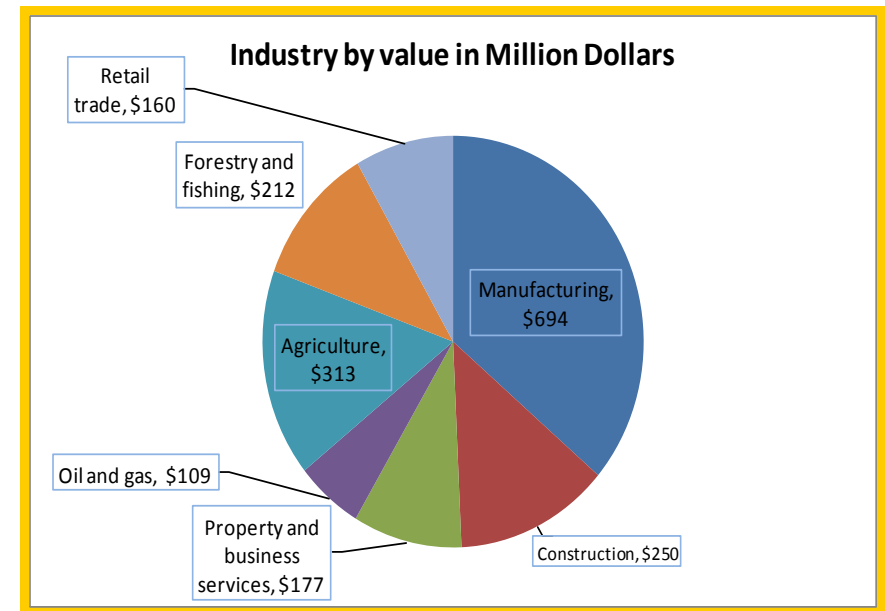
South Gippsland has a thriving economy with over 7,000 businesses contributing to an annual output of over \$2.8 billion. South Gippsland has one of the lowest unemployment rates in Australia

South Gippsland Shire is located just a pleasant ninety minute drive through coastal flats and rolling hills to the south east of Melbourne, and stretches from Nyora in the west, to Welshpool in the east, and Mirboo North to the north. The southern boundary is formed by the Bass Strait coastline. As well as the main towns of Korumburra, Leongatha, Mirboo North and Foster, South Gippsland has over 20 smaller communities that are an integral part of the shire. Its commercial, social, cultural and environmental qualities make it a wonderful environment to live, work and invest. The shire has an expanding population of over 28,000 and covers 3,280 square kilometres which include some of the nation's most arable farming land.

Estimated Resident Population, South Gippsland Shire Council



Source: Australian Bureau of Statistics, Cat. No. 3218.0 - Regional Population Growth, Australia, 2009



Introduction & purpose

Buffalo & Fish Creek Assets

Places

Buffalo Rail Trail
Buffalo Rail Trail Building
John Terrill Memorial Park (Rec Res)
Buckley Park (Top Cricket Park)
Buffalo Play Ground
Fish Creek Community Garden
Fish Creek Memorial Hall
Fish Creek Rotunda
Fish Creek RSL
Fish Creek Social Club Rooms
Great Southern Rail Trail
Hoddle Hall
Mt Nicoll Lookout
Public Park
The old Buffalo Recreation Reserve

People

John Terrill Memorial Park (Rec Res) committee
Buffalo Community Group
Buffalo Hall & Committee
Buffalo/Fish Creek Cubs/Scouts
Fish Creek Art Group
Fish Creek 'Creekers'
Fish Creek Community Development Group
Fish Creek Cricket Association
Fish Creek Jaycee
Fish Creek Kindergarten
Fish Creek Ladies Guild
Fish Creek Primary School



Introduction & purpose

Fish Creek Red Cross
Landcare Group/Land care Network
Prom Coast Arts
The people/the community
Visual Artists

Recreational

Fish Creek/Tarwin Cricket Club
Fish Creek Football Netball Club
Buffalo Indoor Bias Bowls Club
Buffalo/Fish Creek Rail Trail
Buffalo Tennis Club
Fish Creek Badminton
Fish Creek Bowls Club
Fish Creek Creekers
Fish Creek Indoor Bowls Club
Fish Creek Table Tennis
Fish Creek Tennis Club
Fish Creek Yoga Group
South Gippsland Cricket Association
South Gippsland Harness Club

Lifestyle

Fishy Webpage
Beautiful Views
Fish Creek 2002 Master Plan
Fish Creek Public Art
Local Businesses (Fish Creek & Buffalo)
Prom Coast Seachange Festival



Introduction

The Buffalo & Fish Creek Community Plan is a document, which may be used as a reference for any individuals or organisations wishing to understand more about the aspirations of the Buffalo & Fish Creek communities. The Buffalo & Fish Creek Community Plan reflects the view of a wide cross-section of the community and contains a vision for Buffalo & Fish Creek for the next five years.

Contained in the plan is also a list of priority areas, which the communities believe should be focused on to fulfil the vision.

Essentially, the Buffalo & Fish Creek Community Plan looks at what we value in the Buffalo & Fish Creek district and what we want it to become.

The Purpose of the Community Plan

The purpose of the Buffalo & Fish Creek Community Plan is to provide the opportunity for the communities to discuss and decide the future they see for themselves.

The plan will provide residents with certainty in regards to growth and development in the town, the types of services that can realistically be provided, the opportunities that are available now and in the future. It will set priorities in areas such as infrastructure, health, roads and the development of land.

This plan is owned by the communities and will form the basis of discussion with other interested groups such as government and business in the future. It is not a static plan but an evolving one which will provide us with much needed direction into what is otherwise an uncertain future. It will be a way of mapping the future for ourselves and our children and hopefully set a good foundation for our grandchildren.

Community Plan Development and Distribution - process, promotion and communication

Pre Community Plan Promotion and Communication

The major objective of the Community Plan development process has been to ensure that all members of the communities had the opportunity to contribute to the creation of the community plan for Buffalo & Fish Creek.

As part of the Lower Tarwin Valley Districts Project, the Buffalo & Fish Creek Community Plan development process commenced with the South Gippsland Shire Council's Lower Tarwin Valley Community Facilitator gathering all existing information, reports and previous community consultations that had occurred over the past 5 years. This information was then formed into a Community Plan Working Document and introduced to the Buffalo & Fish Creek communities inviting the community to participate in the Community Planning process.

The Buffalo & Fish Creek Community Plan Working Group partnered with the Lower Tarwin Valley Project to become the lead community organisation to help drive the Community Planning process. Several meetings took place with the Buffalo & Fish Creek Community Plan Working Group to help facilitate community consultation, engagement and ensure the Community Planning process met the individual needs of the community prior to the Buffalo & Fish Creek Community Planning Workshop.

The community consultation and engagement process included:

- Individual presentation by the Lower Tarwin Valley Project to the Buffalo & Fish Creek Communities
- Establishment of a Community Planning Working Group.
- Advertising and promotion to the community for the Community Workshops through the delivery of notices to householders, community notices, newspaper articles and newspaper advertisements
- Community workshop held and facilitated by the South Gippsland Shire Council's Lower Tarwin Valley Project to identify Priority Projects and Community Project Teams
- Youth specific engagement sessions and meetings
- Development of the Vision for Tarwin Lower & Venus Bay and the Draft Buffalo & Fish Creek Community Plan
- Presentation of the Draft Buffalo & Fish Creek Community Plan to community members and other key stakeholders for comment
- Distribution of the finalised Buffalo & Fish Creek Community Plan

Post Community Plan Promotion and Communication

Once the Draft Buffalo & Fish Creek Community Plan was developed, the plan was distributed to members of the community to allow for review and feedback. After an agreed review period any changes were incorporated and the finalised version of the Community Plan available to the broad communities of Buffalo & Fish Creek.

Community Plan Distribution and Action

The completed Buffalo & Fish Creek Community Plan will be available to all members of the Buffalo & Fish Creek communities. South Gippsland Shire Council is committed to support the community of Buffalo & Fish Creek and the Project Teams to help develop actions for Priority Projects outlined in the Buffalo & Fish Creek Community Plan when appropriate. The community will be regularly informed of progress in relation to the community plan through the Buffalo & Fish Creek Community Plan Working Group.

Who was involved in developing the community plan?

Community Organisation and Working Group Team

The Buffalo & Fish Creek Community Plan process began with the presentation of the community planning process to the Buffalo & Fish Creek Community in July 2011.

A Buffalo & Fish Creek Community Plan Working Group was established in December 2012 to help promote and facilitate engagement of the Buffalo & Fish Creek communities in the Community Planning Project. The Buffalo & Fish Creek Community Plan Working Group was the lead community organisation for the process. The Working Group consisted of several key representatives from the community and South Gippsland Shire Council staff members. The Community Planning Working Group members were as follows

Community Representatives

Catherine McGlead, John Lockwood, Graeme Nicoll,
Veronica Parks, Meg Parkinson, Geoff Berryman

Council Staff Members

Marzia Maurilli: Community Facilitator – Lower Tarwin
Valley Project
Barbara Look: Community Strengthening Officer
Ned Dennis: Community Strengthening Manager

The Community

The Buffalo & Fish Creek Community Plan has been developed with those members of the community who have an interest in the future of Tarwin Lower & Venus Bay. People involved in the community meetings and workshop session included residents of Tarwin Lower & Venus Bay, youth representatives and key community organisations, groups and clubs.

Engaging our youth in the Community Planning Process

Some input from 19 primary school students....

What I like best about Buffalo & Fish Creek is...

Netball & footy clubs
Tennis courts
Great community
The scenery / views
Lots of cafes / art galleries
Hall
Playground
Rail trail
The school
Gecko gallery
Quiet - not too busy
Cricket nets
Bowling club
The Fishy pub

What I don't like about Buffalo & Fish Creek is...

No school crossing / lolly pop lady.
Cars speeding outside school.
Hard to cross (Fish Creek) Pot holes in the road
Nothing
Littering
To many houses
Not enough shops (Fish Creek)

I think what we need to make Buffalo & Fish Creek a better place is...

Bigger supermarket (Fish Creek)
Pedestrian crossing/lolly pop lady
Better store - Buffalo
Better tennis courts & horse tracks
A pool
Nothing
A skate park
Toilets/clubrooms at Buckley Park
New hall
More trees at the Buffalo section of the rail trail
Better signs to town centre & around town
New public toilets
More garden beds
Art & Music lessons
Motorcross track,
Skate park,
Mcdonalds
A cinema
For the community to continue being a great
community
More stuff in the playground

Engaging our youth in the Community Plan Process

Buffalo & Fish Creek survey results – young people.

Buffalo & Fish Creek youth aged 12 to 18 were surveyed to gather their ideas and suggestions for project development in their community. 7 surveys were returned.

Survey Results

What else do you think your town needs for young people?		What are the things you like most about your town?		What do you think is ok but could be better?		What activities would you like to see happen in your town?	
Teenage clothes shop	2	The people	4	Nothing	2	Having a pool, for summer.	2
Pool	1	Footy club / oval	3	Better/more accommodation at the pub	1	Baseball stadium	1
Ten pin bowling	1	Cricket nets	1	Food shop, have more food in it	1	Carnivals or shows	1
Cinema	1	Food shop	1	The Park & nearby tennis courts	1	Modern markets	1
Nothing	1	Pub & restaurant	1	Pub	1	Anything	1
The pub	1					Running events	1
Swimming pool	1					Bike rides	1
Table tennis comp	1					Movies	1
Courses - for licences	1						

Vision Statement

Buffalo & Fish Creek Vision Statement

To be thriving communities that;

- Value its people and environment
- Honours its history
- Embraces new ideas
- Have a culture that encourages existing, new and returning residents
- Celebrate and encourage our strengths and diversity



Ideas bank

The 'Ideas Bank' or 'Bank of Ideas' is a collection of all the ideas community members put forward throughout the community planning process. Workshop participants were given the opportunity to identify the ideas they thought most important by placing one or more of the 5 'dot's' allocated to each participant next an idea. The results are listed below.

All ideas remain in the Ideas Bank where community members can choose from the 'bank' an idea they may wish to further develop, either as an individual or as part of a group. Ideas may be developed to implementation and completion stage over a consecutive time frame or may be developed to a point and then returned to the Ideas Bank. The same idea can then be further development at a later stage by either the same individual/s or others interested in that idea.

Buffalo & Fish Creek - Priority Projects	Votes
Township streetscapes	12
- More gardens in main street (edible plants)	10
Arts & culture	9
Events	7
Water management	
- Sewerage	
- drainage	12

Projects already identified as <u>District</u> priorities with existing Community & Council Support	For more information please refer to the groups and reports listed below
Weather station	State government
Great Southern Rail Trail	Community & South Gippsland Shire Council

Ideas bank

Buffalo & Fish Creek - Projects

(To be added as above priorities are revised & reviewed)

Buffalo & Fish Creek Projects – Liveability	Votes	Buffalo & Fish Creek Projects – Sustainability & Environments	Votes
Farmers Market/Produce Swap Meet at Buffalo and Fish Creek Rail Trail Stop	5	More tree planting along rail trail (Buffalo side)	5
Meeting Room Fish Creek	3	Development of an Environment Plan	
Fish Creek/Buffalo Community Hub	2	Fox Control (landcare as the lead group)	3
Water quality		Redevelopment of right hand side of Hall Rd, Buffalo i.e lawns/gardens	1
Welcome to Fish Creek/Buffalo new residents pack		Expanding the Fish Creek Land care Group in Urban and Junior Land care	
Roadsides kept cleaner			
Buffalo Garage Sale			
Community Oven			
Shared Cooking Days			
Wine (or beer) Festival (Events)			
Dog Training School			

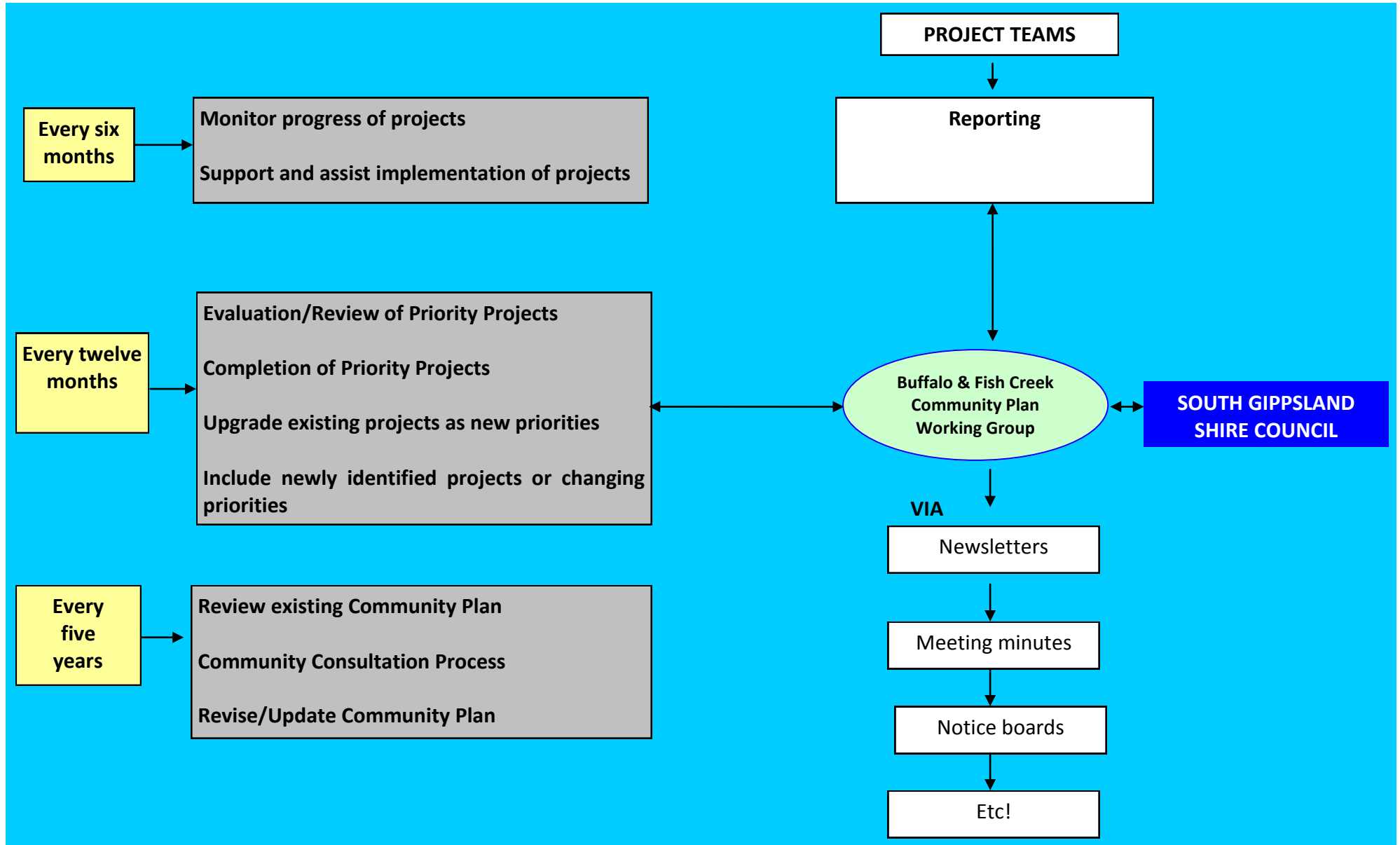
Ideas bank

Buffalo & Fish Creek Projects – Liveability	Votes	Buffalo & Fish Creek Projects - Youth	Votes
Buffalo/Fish Creek Railway Park Development	5	Youth Facility/Area	
Walking/Cycling Tracks <ul style="list-style-type: none"> • Tracks 1 & 5 	2	Youth Activities	
Terrill Park Redevelopment <ul style="list-style-type: none"> • Levee banks around netball & bowls 	1	Skate Park	
Buffalo Men’s Shed		BMX Track	
Future development of Buffalo Recreation Reserve		Movie Nights	
BMX Track at Fish Creek			
Horse Riding Tracks			
New Cricket Nets			
Swimming Pool (no plans to construct new pools)			
Gym			
Hoddle Hall Development (Hoddle Hall Committee as lead group)			

Review process

PLAN

PROJECTS



**South Gippsland Shire Council, through the Community Strengthening team,
proudly support the Buffalo & Fish Creek Communities in the Community Planning Process.**



Version Record – Buffalo & Fish Creek Community Plan		
Ist Draft	29/5/12	3 hard copies