

# *Loch Community Directions*



***December 2010***

# Contents

Introduction	2
Purpose of Plan	2
Vision	3
Where We Are	4
Statistical Snapshot	5
Loch History	6
Community Facilities serving Loch	8
Priority Projects	10
All Projects	11
Schoolchildren's Thoughts	15
Plan Review Process	16
Appendices:	
1. Priority Projects—votes	17
2. Community Project Action Plans	18
3. Invitation	22
4. Community Planning Process	23
5. Community Activities in Loch (1993-2010)	25
6. List of key projects proposed in Loch Urban Design Framework (UDF) 2004	28
7. Grants to the Community	29
8. Acknowledgements	30



# Introduction

*The Loch Community Plan reflects the views of a wide cross-section of the community and contains a Vision for Loch for the next five years. It is owned by the community, detailing what the community values and what it wants Loch to become.*

*It can be used as a reference for individuals or organisations wishing to understand more about the aspirations of the Loch Community.*

*Action Plans are attached to guide the implementation of the Plan by various community working groups.*

## Purpose of Plan

*The Loch Community Plan provides the community's vision in regard to growth and development in the town, the types of services that can realistically be provided, the opportunities that are available now and into the future.*

*The Plan is a means of mapping the future for ourselves and our children and setting a good foundation for our grandchildren.*

*It sets priorities in areas such as infrastructure, recreation and sporting facilities, arts programs and events, pathways and trails and heritage. It provides details of project and service proposals designed to improve the quality of life of residents, attract visitors and enhance the amenity of the village.*

*This plan will form the basis of discussion with other interested groups such as governments and business. It will inform funding applications for various projects and services proposed within the Plan to fulfil the Vision.*



# Vision

*Loch has a vision to preserve the village atmosphere and to extend its historic, cultural and garden themes. We see the town as continuing to be safe and well-serviced for all age groups, providing sustainable support and opportunities for our community into the future.*

*We see ourselves as the historic Garden Village of South Gippsland, a township set in the rolling hills, with a distinctive garden village character with well-tended gardens spilling out from the heritage buildings onto the road reserves providing year round colour and interest.*

*Loch is a small thriving rural township with a rich array of heritage architecture, renowned for its arts, crafts, antiques and quality food. It is a destination and a stopping point for visitors, providing public facilities, tourist information, accommodation and food and drink—a place where both residents and visitors alike have time to relax and enjoy the scenery.*

*The Loch community accepts the need to grow, but is determined to lead and influence how such growth occurs in order to maintain the valued characteristic of the township. It is committed to the sustainable use of resources and to ensuring the continuation of its high quality educational, health, recreational and sporting services.*



# Where we are



Lifestyle



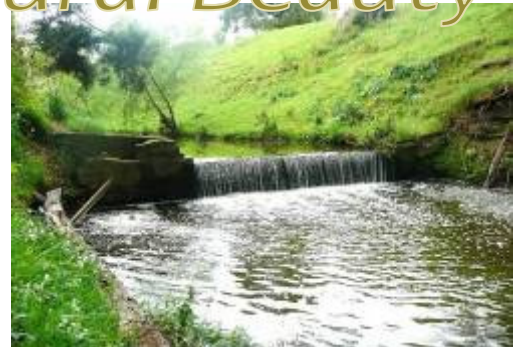
History



Recreation



Natural Beauty



# Statistical Snapshot

This statistical snapshot is taken from the Australian Bureau of Statistics from the 2006 Census, for the postal area of Loch 3945.

## Population by Age and Sex

	MALE		FEMALE		TOTAL	
	Count	Percentage	Count	Percentage	Count	Percentage
TOTAL	774	50.6%	759	49.4%	1533	
UNDER 19	209	13.6%	198	12.9%	407	26.5%
20 – 54	342	22.4%	361	23.5%	703	45.9%
OVER 55	223	14.6%	200	13%	423	27.6%

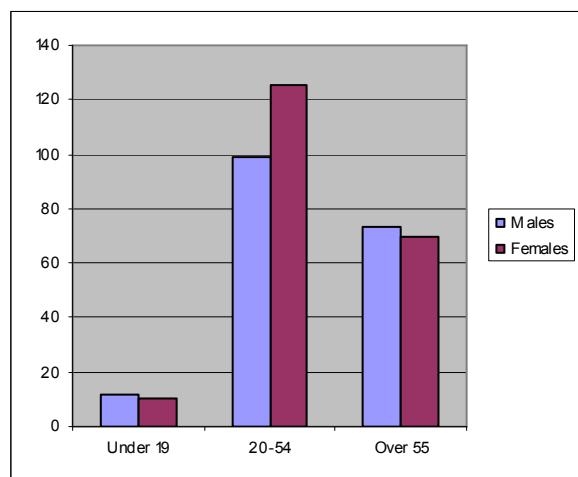
In the 2006 Census, there were 453 families in the postal area of Loch, 201 couples with children, 210 Couple families without children, 39 One Parent families and 3 stated as other.

There were a total of 570 occupied private dwellings, of which 97.7% were separate houses. These dwellings included 227 fully owned properties, 248 being purchased and 66 that were rented. In the postal area of Loch, 78.9% of these occupied dwellings were family households, 18.8% were lone person households and 0.9% were group households.

## Income

(\$ Weekly)	LOCH	AUSTRALIA
Median Individual income	455	466
Median Household Income	1,044	1,027
Median Family Income	1,129	1,171

## Voluntary Work by Age and Sex



## Employment Participation:

During the week prior to the 2006 Census, 829 people aged 15 years and over in Loch were in the labour force. Of these 60.3% were employed full-time, 29.7% were employed part-time and 4.2% were unemployed.

## Internet Connections:

Of the private dwellings, 195 stated there was no internet connection, 94 had broadband connection and 289 had dial-up connection.

## Postal Area

Postal Areas are ABS approximations of Australia Post postcodes, created by allocating whole Collection Districts (CDs) on a 'best fit' basis to postcodes. Census Postal Areas exclude non-mappable Australia Post postcodes e.g. post office box postcodes. This means that there are more Australia Post postcodes than Census Postal Areas. Every CD is allocated one valid Australia Post postcode as the Postal Area for that CD. When a person is enumerated in that CD, the Postal Area is allocated to the person as their Postal Area of Enumeration. When a person's address is coded to their CD of Usual Residence, the Postal Area of the CD is allocated to the person as their Postal Area of Usual Residence. The Postal area for 3945 includes Loch, Jeetho, Krowera and Woodleigh

# Loch History

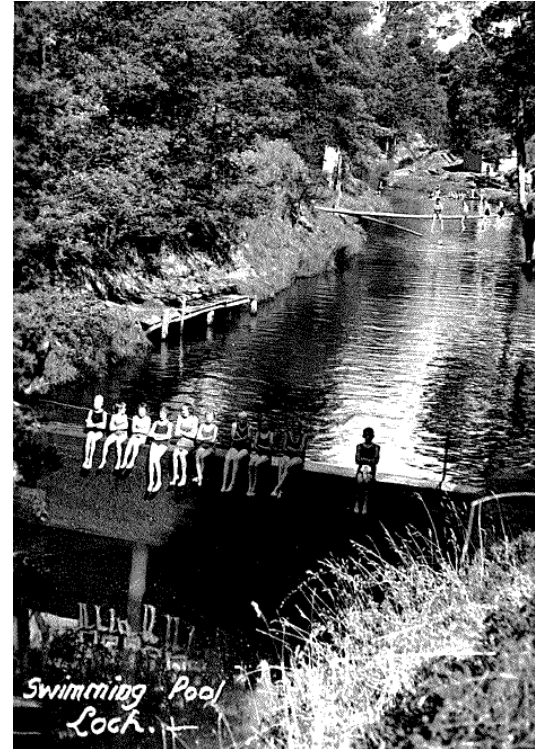
An application in 1876 for a licence to occupy a land allotment was successfully granted to David Wishart Gowdie of Emerald Hill (later South Melbourne). Gowdie successfully applied for a crown lease in 1882—and cleared 80 acres, sowed the land with English grass and an acre of potatoes and built a log home. This development cost him, and as his financial situation faltered, the land was transferred in 1886 to Frances Smart, Christian Smart, both from Kew, and August Smith, a farmer from Jeetho West.

They recognized the potential for a township with the railway coming through. The firm of surveyors Bruford and Braim were engaged—and the sale of the first town lots took place in 1887. This was the first subdivision; and this was the beginning of Loch.

The township was named after the then State Governor's wife Lady Loch.

Loch, in its history, has had:

- |                                     |                        |
|-------------------------------------|------------------------|
| 5 stores                            | 3 bakehouses           |
| 2 blacksmith shops                  | 2 butchers             |
| 2 banks                             | wine salon             |
| chemist shop                        | 2 private hospitals    |
| a saddler                           | 2 coffee palaces       |
| stock agents                        | solicitors             |
| coach services                      | timberyards            |
| 2 newspapers                        | dentists               |
| photographers                       | plumbers               |
| butter factory                      | important stock market |
| doctor                              | shops selling gifts,   |
| confectionery, fruit and vegetables |                        |



# Loch History



The Loch Brass Band, circa 1905-1923, played at various locations around Loch & District, with about 15 instruments and was very popular at sports meetings, picnics and other public gatherings.

The board game 'Squatter', made popular in the 1960s, features Coorumbene Station, named after the pioneer sheep grazing property located three miles from Loch. The Loch railway station is also represented in the game by the letters LA as the nearest railhead.



An elephant once escaped from a traveling circus visiting Loch and went on the rampage around the district. It was reported that a couple of local lads rode it back to the circus.

One of the early firms of auctioneers that established itself in Loch was called 'Little and Biggar'.



# Community Facilities

*serving Loch*

## Community Groups/Clubs

Duke of Connaught Masonic Lodge  
Greenhills Benevolent Society  
Lions Club of Strzelecki  
Loch & District Bowling Club  
Loch & District CWA  
Loch & District Fire Brigade  
Loch Arts Council  
Loch Community Development Assoc. (LCDA)  
Loch Public Hall Committee  
Loch Public Hall Historical Group  
Loch Ladies Auxilliary  
Loch Memorial Reserve Inc.  
Loch-Nyora Landcare  
Loch-Nyora Patchwork Group  
Poowong—Loch Cricket Club  
Preschool committee  
Skate Park Committee

## Community Events

Loch has an extensive calendar of events throughout the year, including annual arts, food & wine and musical events, monthly indoor and outdoor markets and more.

## Health Services

Community Health Centre  
Medical Practice  
Alternative Therapies  
Yoga, massage

## Transport

Shire Community Bus  
(on request)  
Taxis  
V/Line Bus Service

## Education

Loch Primary School  
Loch Pre-School  
Secondary Education in the region

## NEWS

Loch has a community news paper, Loch Express. There is good mobile phone coverage with some providers but not all. Not all residents have access to high-speed broadband.

# Community Facilities

*serving Loch*

## Community Facilities

Bowling Club  
Camping at the Recreation Reserve  
Centennial Park  
Greenhills Residential Facility  
Greenhills Community Centre  
including the LCDA Rooms  
Justice of the Peace  
Loch Public Hall  
Loch Uniting Church  
Masonic Hall  
Police Station  
Recreation Reserve  
Skate Park  
St Vincent's Catholic Church  
Sunnyside Park  
Suspension Bridge  
Tennis Courts  
Tourist Railway



# Priority Projects

Approximately 40 community members attended the Loch Community Planning Workshop held on 2nd September 2010. During that workshop and also by community consultation, everyone voted for the projects that they saw as priorities for the Loch Community.

The following projects were identified as the key priorities:

## Key Priority Projects

### PATHWAYS AND TRAILS

*Loch Lap*

*Pathways to Hilda Falls, Ferriers Road, Cape Horn*

### SUNNYSIDE PARK DEVELOPMENT

*Second set of toilets*

### LOCH STREETScape

### RECREATION FACILITIES

*Establish a district based soccer club*

### TRAFFIC MANAGEMENT & CAR PARKING

*Car parking for Preschool and Public Hall*

### ENTERTAINMENT

*New Theatre Group*

*Working groups have been established for these key priority projects and action plans have been developed. For the full details of the action plans, see Appendix 2, page 18.*

*If you are interested in joining any of the project teams or working groups to help with these projects, see the invitation, Appendix 3, page 22.*

*For the full list of voting outcomes against all identified projects, see Appendix 1, page 17.*

*The full listing of all projects identified by the community are on the following pages.*

# All Projects

## PATHWAYS & TRAILS

1. Promote the creation of the "Loch Lap" - a trail around Loch, as proposed in the Urban Design Framework.
2. Support the creation of pathways to Hilda Falls, Ferriers Road and Cape Horn.
3. Develop proposals for trails linking to the neighbouring townships of Nyora and Poowong.

## SUNNYSIDE PARK DEVELOPMENT

1. Secure a second set of toilets for the park for use by park and tourist railway users, and visitors to the summer market.
2. Create more shade and seating areas with tree planting and park furnishings.
3. Support the Loch Historical Group in the restoration of the former police lock-up.

## LOCH STREETScape

1. Implement the Loch Streetscape in conjunction with the Shire Council, using the design prepared by Council and supported by Council funding as allocated in its Long Term Financial Plan.
2. Establish a piece of public art at the northern end of Smith St. as proposed in the original Loch Urban Design Framework.
3. Establish an avenue of honour on the western entrance to Loch.
4. Promote the extension of footpaths, curb and channeling along the northern side of Victoria Rd. up to the Catholic Church.

## NEW GROUPS/CLUBS

Ideas welcome for formation of new groups eg

- Gardening group
- Fishing
- Soccer
- Junior Fire Brigade
- Table tennis

## HERITAGE

1. Support the Loch Arts Council in developing heritage walk programs and promotional material.
2. Develop a plan of heritage-style assets in the village—phone box, lighting, nature strip gardens etc to maintain the heritage atmosphere.
3. Protect the historic and village character in the Loch Structure Plan.

# All Projects

## RECREATION FACILITIES

1. Support the Memorial Recreation Reserve Committee to develop the Memorial Recreation Reserve Strategic Plan for the future directions of the reserve.
2. Establish a soccer club for the district based in Loch for adults and children, men and women.
3. Investigate the need for redevelopment of the club rooms to accommodate women's soccer and other proposed activities in the longer term.
4. Support the Recreation Reserve Committee to set up a dump point for motor home and other users.
5. Identify the needs for redevelopment of the third tennis court or change of use of the space for cricket or other activities.
6. Support plans for the third cricket practice net.
7. Support the Loch Bowling Club in its plans to construct a synthetic green, rebuild the kitchen and install airconditioning.

## TRAFFIC MANAGEMENT & CAR PARKING

1. Support traffic management proposals for the Loch Primary School.
2. Investigate means of addressing car parking requirements for the Preschool and the potential redevelopment of the Public Hall car park.
3. Enhance car parking arrangements for the Summer Loch Market.
4. Address traffic management requirements for large Loch festivals such as the Food and Wine Festival.
5. Address needs for pedestrian crossings in town, including the middle of the main street.

# All Projects

## PARKS AND GARDENS

1. Support the Lions Club in plans to enhance the market site and secure the land on a long term basis.
2. Identify needs and potential for extension of the skate park.
3. Liaise with Shire Council for the development of Centennial Park—more picnic furnishings etc.
4. Loch Community Garden—support LCDA in the development of plans for the garden.

## ENTERTAINMENT

1. Support the Loch Arts Council in its proposed programs of arts, musical and theatrical festivals, events and activities and youth programs.
2. Assist the Public Hall committee in plans for enhanced usage.
3. Formation of new Theatre Group.
4. Conduct a feasibility study for a Picture Theatre.
5. Conduct a feasibility study for a Sound Shell

## DISTRICT PROJECTS INTER-COMMUNITY CLUSTER TOWNS (BENA, NYORA, POOWONG).

1. Enhance Community transport between towns.
2. Conduct a feasibility study for walking path linkages between towns.
3. Promote natural gas extensions to Loch/Poowong/Nyora.

## YOUTH

1. Review the needs/wants of local youth for a dedicated facility/space.
2. Explore options for a multi-purpose youth activities facility/building – look at review/use of current community buildings.
3. Support/strengthen/develop Regional Young Farmers group.
4. Support/Develop youth activities – increasing youth membership of local groups.

# All Projects

## SIGNAGE

1. Develop a signage plan to integrate and standardise signage throughout the village as detailed in the Loch Urban Design Framework.
2. Liaise with VicRoads to enhance signage on the highway to attract visitors.
3. Improve signage or other safety features across the train tracks to the summer market.

## BUSINESS GROWTH

1. Support the Loch Business Group in economic development projects.
2. Encourage new business development to service the needs of residents across the district.
3. Enhance tourism focused festivals and events (Food and Wine festival, Arts and Crafts festivals, HymnFest, Sticky Date pudding competition etc).

## TOURISM

1. Contribute to Regional Tourism strategies.
2. Enhance the Visitor Information board.
3. Develop a Town map/Town model.
4. Conduct a feasibility study for the redevelopment of the train station area in conjunction with SGTR.

## DRAINAGE AND STORMWATER MANAGEMENT AND SEWERAGE

1. Liaise with the Shire Council to improve drainage and stormwater management throughout the town.
2. Continue representation of the Loch community in liaison with South Gippsland Water for the planned installation of a sewerage system for Loch.

## MISCELLANEOUS

- Power Optic Cables.
- Power cables put underground in conjunction with sewerage installation.
- Power to Lions Park.

# *Schoolchildren 's Thoughts*

## *What is great about Loch*

*Trees to climb*

*Skate Park*

*Hall*

*Loch Market*

*General Store*

*Park*

*Railway Station*

*Loch reserve*

*Fire Station*

*Post Office*

*Police Station*

*Kindergarten*

*School*

*The Nice People*

*The Greetings when you go into shops*

*Flowers*

*Shops*

*Cafés*



## *How We Can Improve Loch*

*Bigger skate park*

*Toy shop*

*Swimming pool*

*Pony club*

*Toilets in park*

*Botanical gardens*

*Water feature at park*

*Trampoline*

*Pet shop*

*Pizza shop*

*Kids' place (arcade games, pool table, etc )*

*Cinema*

*Bike track*

*Sand pit in park*

*More tables in park*

*Stadium*

*More colour / flowers*

*Bigger town*

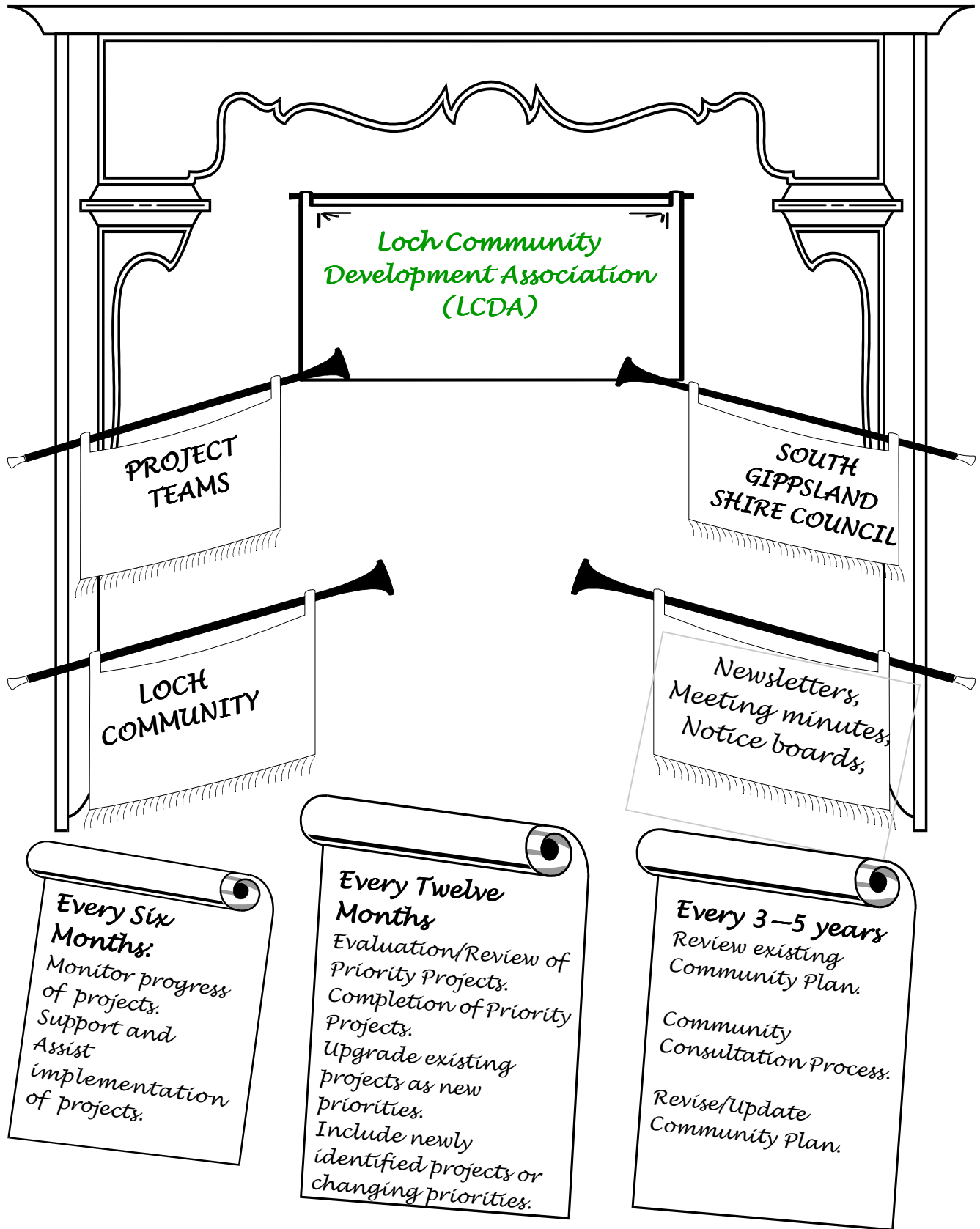
*Restore pool in creek*





# Plan Review Process

## PROJECTS



# Priority Projects - Votes

The list below shows the full voting for the community projects—see page for the key priority projects.

PATHWAYS AND TRAILS	
<i>Loch Lap</i>	9
<i>Pathways to Hilda Falls, Ferriers Road, Cape Horn</i>	14
<i>Trails linking neighbouring townships</i>	1
SUNNYSIDE PARK DEVELOPMENT	
<i>Second set of toilets</i>	18
<i>Restoration of Lock-up</i>	7
LOCH STREETSCAPE	
16	
NEW GROUPS/CLUBS	
<i>Gardening Club</i>	8
<i>Junior Fire Brigade</i>	1
HERITAGE	
<i>Heritage Walk programs</i>	2
<i>Heritage Assets plan</i>	3
RECREATION FACILITIES	
<i>Establish a district based soccer club</i>	19
<i>Cricket activities</i>	6
<i>Tennis activities</i>	1
TRAFFIC MANAGEMENT & CAR PARKING	
<i>Car parking for Preschool and Public Hall</i>	11
PARKS & GARDENS	
<i>Lions Club Market Site enhancement</i>	5
<i>Centennial Park development</i>	2
<i>Loch Community Garden</i>	7
ENTERTAINMENT	
<i>Increased use of Public Hall</i>	2
<i>New Theatre Group</i>	10
<i>Picture Theatre/Sound Shell</i>	2
DISTRICT PROJECTS INTER-COMMUNITY	
CLUSTER TOWNS (BENA, NYORA, POOWONG)	
<i>Natural Gas</i>	7
YOUTH	
<i>Youth Facility/Space</i>	3
SIGNAGE	
2	
TOURISM	
<i>Town map/model</i>	2
<i>Redevelopment of train station area</i>	2
BUSINESS GROWTH	
<i>Formation of new Business Group</i>	3
DRAINAGE AND STORMWATER MANAGEMENT AND SEWERAGE	
MISCELLANEOUS	
<i>Power cables underground</i>	1

# **COMMUNITY PROJECT ACTION PLANS**

## **PRIORITY AREAS AND ACTION PLANS TO DELIVER**

The following charts outline the initial action plans developed for each of the priority areas as a starting point for projects.

The Community Action Plans are developed to provide the community with a broad guideline toward achieving its objectives and overall goals for an initial five year period. The Community Action Plans are developed and owned by the community, for the community, as a shared vision for the future and are the responsibility of the community and shared partnerships with Local, State and Federal Government.

For each priority project the Loch Community Plan Project Teams in consultation with South Gippsland Shire Council, District Community Groups and other Key Stakeholders as required, will manage and initiate implementation of projects as agreed. The following action plans will be reviewed by the Loch Community Plan Project Teams and also by the community on an annual basis.

<b>Project Name: Streetscape</b>				
<b>Aim: To implement the Loch Streetscape Plan</b>				
<b>Actions</b>	<b>Timeline</b>	<b>Status</b>	<b>Partnerships</b>	<b>Responsible</b>
1. Review SGSC design plans for streetscape	Oct 31st 2010	Completed	SGSC	S. Hickmott
2. Identify individual key projects	Mid Nov 2010	To be finalised	SGSC	S. Hickmott
3. Prioritise projects with SGSC Engineering Dept and impact of sewerage scheme commencement	Mid Nov 2010	To be finalised	SGSC	S. Hickmott
4. Check road width and all safety concerns, traffic flow, parking etc	End Dec 2010	To be finalised	SGSC	S. Hickmott
5. Bus stops—lobby VicRoads and council for funding	Autumn 2011	To be finalised	SGSC VicRoads	S. Hickmott

<b>Project Name: Theatre/Arts/Vocal Group</b>				
<b>Aim: To provide musical, arts theatrical and historical events throughout the year</b>				
<b>Actions</b>	<b>Timeline</b>	<b>Status</b>	<b>Partnerships</b>	<b>Responsible</b>
1. Get expressions of interest for Drama Group, via community newsletters in Loch, Nyora & Poowong and Lang Lang	Autumn 2011	To be finalised		M. Birnie
2. Establish a community singing group	October 2010	Completed		M. Ludenia M. Birnie
3. Develop an annual calendar of events and identify funding sources	Autumn 2011	To be finalised	SGSC	H. Booth
4. Address Public Liability & Insurance issues	September	Completed	SGSC, LCDA	H. Booth
5. Identify funding for scripts, sets, costumes etc	TBA	To be finalised	Arts Victoria	M. Birnie

<b>Project Name: Loch Lap</b>				
<b>Aim:</b> To complete a walking and bike track around Loch.				
<b>Actions</b>	<b>Timeline</b>	<b>Status</b>	<b>Partnerships</b>	<b>Responsible</b>
1. Review previous route plans and define route	To be finalised	To be finalised	Streetscape committee Business People	L. Knox
2. Identify Safety aspects	To be finalised	To be finalised	SGSC	L. Knox
3. Investigate access and ownership	To be finalised	To be finalised	SGSC	S. Hickmott
4. Source approval and funding from SGSC	To be finalised	To be finalised	Streetscape Committee SGSC	S. Hickmott
5. Clarify insurance liability	To be finalised	To be finalised	SGSC	S. Hickmott
6. Research surface types	To be finalised	To be finalised	SGSC	S. Hickmott
7. Budgets—Grants	To be finalised	To be finalised	SGSC	S. Hickmott
8. Management, upkeep and maintenance	To be finalised	To be finalised	SGSC	S. Hickmott

<b>Project Name: Parking at School &amp; Preschool</b>				
<b>Aim:</b> Improve safety for private car drop off and pick up				
<b>Actions</b>	<b>Timeline</b>	<b>Status</b>	<b>Partnerships</b>	<b>Responsible</b>
School to liaise with Shire Council to develop appropriate car parking arrangements	Urgent	completed	Community LCDA SGSC	G. Bull
Hall Committee and Council to review plans, costs and funding opportunities for redevelopment of Hall Car Park	February 2011	To be finalised	SGSC	J. Deane Hall Committee
Council and Preschool to review car parking arrangements	February 2011	To be finalised	SGSC	J. Deane Hall Committee Preschool committee

<b>Project Name: New Soccer Group</b>				
<b>Aim:</b> To establish a new soccer club including Loch, Nyora and Poowong children and parents				
<b>Actions</b>	<b>Timeline</b>	<b>Status</b>	<b>Partnerships</b>	<b>Responsible</b>
1. Contact principals of Loch, Nyora and Poowong Primary Schools and Peter Notman (Poowong) and Brett Hume (Nyora)	Mid Sept 2010	Completed	Schools, recreation reserves	G. Birnie
2. Seek Feasibility Study for Club Rooms etc redevelopment	ASAP	Current	Recreation Reserve Cricket Club Tennis Club Soccer Group SGSC	G. Birnie
3. Press Release for meeting of interested parties	Mid Nov 2010	Meeting held and committee established	Victorian Football Federation	G. Birnie

<b>Project Name: Sunnyside Park</b>				
<b>Aim:</b> To have public toilets constructed at Sunny side Park				
<b>Actions</b>	<b>Timeline</b>	<b>Status</b>	<b>Partnerships</b>	<b>Responsible</b>
1. Research types of toilets available	To be finalised	Good information available	Parks Victoria Caravan/ Camping Association	L. Knox
2. Build a business case for a second set of toilets in Loch	To be finalised	Some work already done	Service Clubs Tourism Industry Tourist Rail Town Business Group	S. Hickmott
3. Present case to Council for permission and maintenance	To be finalised	To be finalised		S. Hickmott
4. Investigate potential for RV camping (and RV Dump site) near SunnySide Park or in Recreation Resercve)	To be finalised	To be finalised	SGSC Tourism	LCDA. Recreation Reserve Committee
5. With approval—build them!	To be finalised	To be finalised	SGSC Assets	LCDA

# Invitation

Loch has a variety of community groups. Some are directly represented on the Town's Association known as the Loch Community Development Association LCDA, and all groups work cooperatively in developing community projects.

## Invitation

Loch's future is dependent on the support of its residents. If you would like to join any of the listed Loch Community Groups—or would like to be involved in any of the identified Priority Project teams, there are various ways to get in touch!

- Contact the Loch Community Development Association (LCDA), meetings on the first Thursday of each month, 7.30pm Loch Community Centre, Clarence Street
- Pick up a 'New Resident' kit — available at the Loch Post Office containing all group contact details.
- Loch website [www.loch.org.au](http://www.loch.org.au)
- Log on to South Gippsland Shire Council website [www.southgippsland.vic.gov.au](http://www.southgippsland.vic.gov.au) and go to the community directory.



## Appendix 3

# Community Planning Process

Loch was proposed as a priority by the South Gippsland Shire Council to participate in its shire-wide community planning process. The process involves a partnership in which Council staff support the local community in the consultation process and the development of the Plan with the involvement of as many residents as possible.

The Community Planning process began with the presentation by Council staff to the Loch community on 13th May 2010 to confirm involvement of the Loch community in the Integrated Community Planning project.

Council staff collated all previous reports and plans into a working document on which the new planning process could build.

Representatives from the community formed a Community Planning Working Group to work with Project Officers to organise community consultations and input from local organisations.

The Working Group developed a preliminary draft Plan which was exhibited to enable feedback from the community.

A Community Plan Workshop was held with around 40 attendees to identify priorities and develop more detailed proposals for projects and services.

The Working Group then developed the final draft Plan which was again exhibited across the township for further comment and refinement.

The final Community Plan was then completed by the Working Group with assistance of the Council Integrated Community Planner.

Community representatives presented the Plan to Council and Council agreed to support the community to action the Priority Projects outlined in the Community Plan

The Plan is available for all members of the Loch community and the community will be regularly informed of progress in implementation.

The LCDA is responsible for oversight and implementation and to arrange for regular reviews and updating of the Plan.

## WHO WAS INVOLVED IN DEVELOPING THE COMMUNITY PLAN?

The Working Group consisted of 8 representatives from the community and South Gippsland Shire Council staff members.

The Community Planning Working Group members were:

### Community Representatives:

Noel Gregg	Jennie Kennedy
John Kennedy	Lorraine Knox
Maree Ludenia	Bill Statham
Jennie Deane	Greg Bull

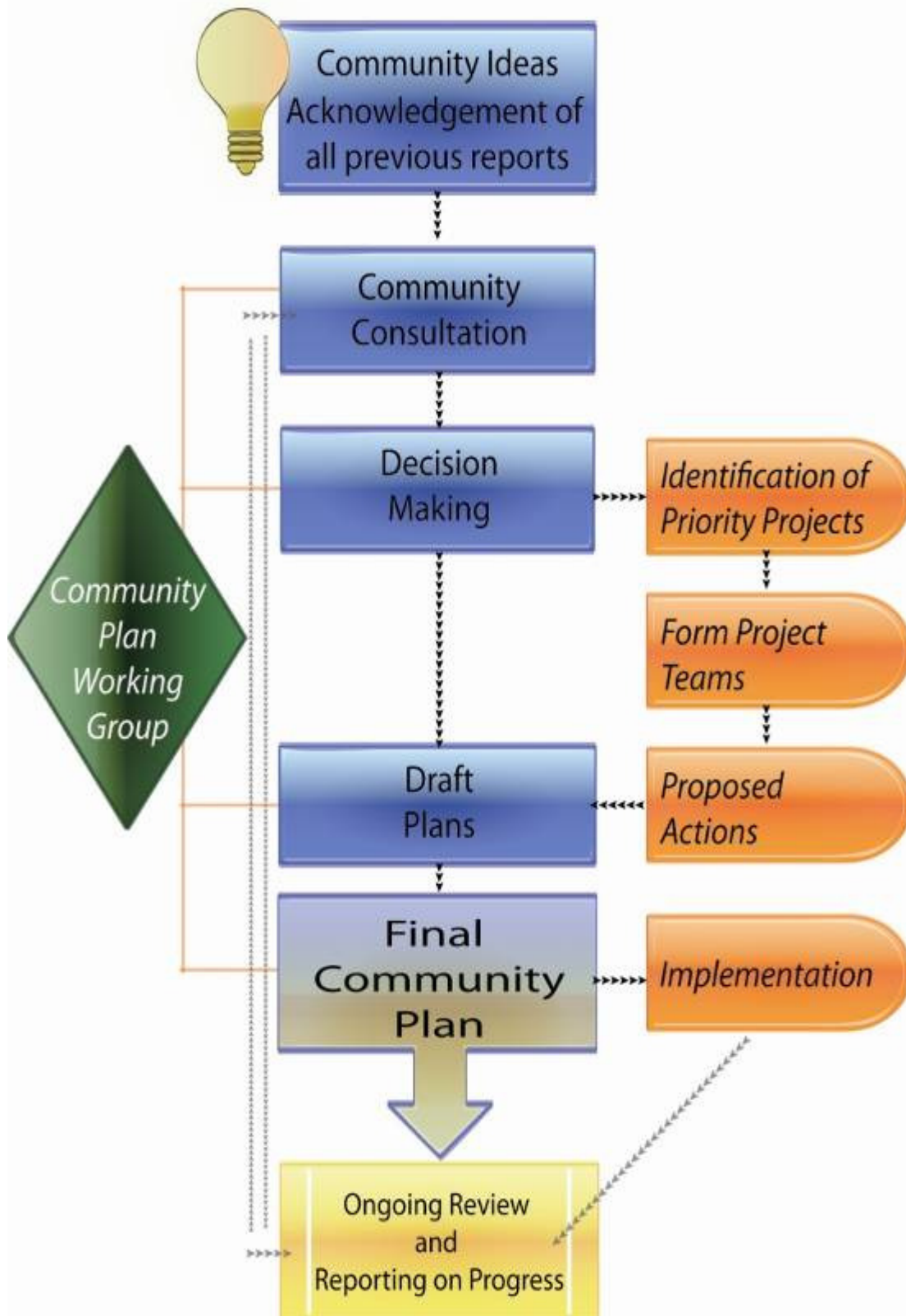
### Council Staff Members

John Ernst	- Project Officer
Barbara Look	- Project Officer
Marzia Maurilli	- Project Officer
Valuable contribution by other Council Officers from a range of teams	



# Community Planning Process

## Community Plan Process



## A Summary of Community Activities in Loch, 1993-2010

### 1993

Tidy Towns	Greenhills
Survey, Public meetings Newsletter, Town signs, & other projects; Won a regional award	Annual fundraising events: Camelia Day; Golf Tournament; Garden Party.

### 1994

Greenhills	Other (Including: Heritage & Beautification; Tourism 1990's)
Annual fundraising events: Camelia Day; Golf Tournament; Garden Party.	Heritage Walk Brochure published

### 1995

Tidy Towns	Greenhills	CCC /LCDA
Won a regional award	Annual fundraising events: Camelia Day; Golf Tournament; Garden Party.	CCC commenced

### 1996

Greenhills
Annual fundraising events: Camelia Day; Golf Tournament; Garden Party.

### 1997

Tidy Towns	CCC /LCDA	Other (Including: Heritage & Beautification; Tourism 1990's)
Third entry	Charrettes/Street Life group with Council support	H & B won grant from Council for garden bed, administered by LVBA

### 1998

CCC /LCDA	LVBA
LCDA established	LVBA Established; Loch Streetlife; Loch brochure; Reviewed Charrettes; Annual Carols by Candlelight and "Light up Loch" competition; Street Banners with Loch Primary School

## 1999

LCDA	LVBA
2-monthly Loch Express first published	Promotional Presentation in Shire Expo – presentation to Steve Bracks

## 2000

LCDA	LVBA
Olympic Torch Relay event	Australia Day: kid's art competition, street events and Loch Hall event.
Greenhills	Historical Group
1 <sup>st</sup> Accreditation	War Loans Banners restored, framed and hung in Hall

## 2001

LCDA	LVBA
Bypass consultations commenced; Market commenced	Survey of members re effects of proposed bypass
Greenhills	Historical Group
Charity Auction raised \$10,000; Minister Bronwyn Bishop visit; Senator Patterson visit	125 <sup>th</sup> celebrations: Loch History Book launched; War memorial erected and commemorated Purchased police Lock-up for future use as 'museum'

## 2002

LCDA
Fun Day; Community Consultative Forums; "Other Award"

## 2003

LCDA	LVBA	
Cape Horn lookout; Governor's visit; Community Forum; Reps met with Prime Minister; Fun Day	Web Pages on Prom Country	
Greenhills	Historical Group	Reserve Committee
Community Centre opened incl. GP's and community health nurse; Senator Troeth visit	Collection of 80 historic photos hung in Hall - later distributed to public buildings and shops	Adult mosaic workshop; New tractor shed; Clearing sale; Small Towns Development fund grant for Gazebo; Youth subcommittee: Drive-in movie, Youth mural, Youth mosaic workshop

## 2004

LCDA		LVBA
Community Park funded by Small Towns Development Fund; Trees for Loch project; Representation on local sewerage committee;		Ceased operations
Greenhills	Historical Group	Reserve Committee
Senator Fifield visit	Indoor winter markets commenced	Gazebo completed; Drive-in movie – youth subcommittee

## 2005

LCDA	Other (Including: Heritage & Beautification; Tourism 1990's)
Xmas festival commenced in community park	Urban Design Framework completed

## 2006

Tidy Towns	LCDA	LVBA
4 <sup>th</sup> entry - won two regional awards	Sunnyside Community Park officially opened; giant earthworm display	Officially disbanded
Greenhills		Reserve Committee
Hostel closed		2 <sup>nd</sup> mosaic workshop; cricket pitch resurfaced

## 2007

Other (Including: Heritage & Beautification; Tourism 1990's)	LCDA	Reserve Committee
Victoria Rd. car parking reconfiguration	Charity auction raised \$10,000 for skate park and skate park opened	Tennis courts resurfaced

## 2008

Greenhills	LCDA
Hostel for people with disabilities opened; medical practice and community health relocated to Greenhills building	Inaugural annual wine and food & art festivals

## 2009

LCDA	Historical Group	Other (Including: Heritage & Beautification; Tourism 1990's)
Opened office and community meeting room in the community centre; Inaugural sticky date pudding competition; garden festival commenced; New banner poles erected on western end of village entry	Additional list of veterans of First World War included on the war memorial	Landcare constructing access and viewing platform to Hilda Falls; Public Hall renovations – roof etc.

## 2010

LCDA	Reserve Committee
Community Garden established; Loch Arts Council established, conducted annual Arts Festival and first of regular LochAlive variety concerts.	Soccer Group established

### **List of key projects proposed in Loch Urban Design Framework (UDF) 2004**

#### **Projects Completed**

Sunnyside Park  
Children's Playground  
Centennial Park visibility  
Wooden Soldier Sculpture  
Car parking design  
Branding: banners, envelope stamp  
Speed limit  
Pedestrian underpass  
VicRoads signage on highway  
Railway Station area upgrade  
Earthworm display  
Business Group reformed  
Creek and swimming hole cleaned  
Cape Horn development  
Town entry signage  
Planning scheme amendment  
Raise awareness of businesses & facilities  
Skate park  
Outdoor displays and activities  
Public art—Victoria Rd

#### **Projects Underway**

Sewerage  
Streetscape  
Improved pedestrian access  
Drains etc  
Redevelop business group  
for support/marketing

#### **Projects not commenced**

Parking space for bikes,  
motor bikes, caravans  
Walking/bike trail plan  
Avenue of honour—west end  
Public Art—Smith Street  
Youth gathering place  
Integrated town signage  
Viewing place for swimming  
pool ruins

# Grants to the community

This shows some of the successful grant applications made by the community over the past 5 years - these are grants received with council assistance and may not necessarily include local grant applications

## Shire Council Community Grants

### **2004/05**

Loch Community Development Association	Cape Horn lookout development	\$3,000
Loch Memorial Reserve Committee	Public Toilet upgrade	\$1,945

### **2005/06**

Loch Memorial Reserve Committee	Update Clubroom facilities	\$1,352.33
---------------------------------	----------------------------	------------

### **2006/07**

Loch Memorial Reserve Committee	External facelift of Clubrooms	\$1,956
---------------------------------	--------------------------------	---------

### **2007/08**

Loch Community Development Association	Loch banners and poles	\$2,953
Loch Memorial Reserve Committee	Security shutters and Exterior upgrade	\$2,600

### **2008/09**

Loch Memorial Reserve Inc	Replace old carpets with new in clubrooms	\$1,979
Loch Public hall	Reclad rear external walls of hall	\$3,500

### **2009/10**

Loch Food & Wine Festival sub-committee	Loch Food & Wine Festival	\$3,000
Loch/Nyora Pony Club	Purchase and installation of 22kl water tank	\$3,513

## Councillors' Discretionary Funds

### **2007/08**

Loch Community Development Association	Contribution to Skate park	\$1,000
Loch Community Development Association	Subscription & Donation Loch Express	\$300

### **2008/09**

Loch Public hall Committee	Contribution to insurance for Loch Market	\$1,000
Loch Memorial Recreation Reserve	Contribution to resurfacing cricket ground	\$500

### **2009/10**

Loch & District Pre-School Centre Inc	Costs towards shade sail/sun smart	\$880
Loch Arts Council—Loch Alive	Seeding grant—Loch Alive—Spring Variety Show	\$500
Loch Community Development Association	Community Garden costs	\$750
Loch-Nyora Landcare Group	Access Platform at Hilda falls	\$500

## Others

Plus Council received grants for the following:

RDV—Planning for growth—Nyora, Loch, Poowong and Meeniyah Structure Plans	\$50,000 (2009)
DVC (Now DPCD) Drought Relief for Country Sport, Loch Bowls	\$7,106 (2007)

Appendix 7

# Acknowledgements

The Loch Community has accessed many documents and these are acknowledged, with gratitude, below:

“Loch & District 2001, From then until now” Loch & District Historical Group

“The History of Loch & District 1972” Joseph White

“Looking at Loch” 1976 Joseph White

Photos courtesy of Loch Public Hall Historical Group

Photos courtesy of the students of Loch Primary School

Photos courtesy of the members of the Loch Community Plan Working Group

Loch Streetscape Masterplan—Concept Plan

Loch Urban Design Framework 2004 (UDF)



Legend:

ABS Australian Bureau of Statistics  
CCC Community Consultative Committee  
DPCD Department of Planning & Community Development  
DVC Department of Victorian Communities  
LCDA Loch Community Development Association  
LVBA Loch Village Business Association  
RDV Regional Development Victoria  
SGSC South Gippsland Shire Council  
SGTR South Gippsland Tourist railway  
UDF Urban Design Framework

## Appendix 8



South Gippsland Shire Council, through the Community Strengthening team, proudly supporting the Loch Community in the Community Planning Process.