



2016 BUSHFIRE MAPPING AND POLICY UPDATE

The Andrews Government is committed to ensuring that communities at risk from bushfire are as resilient as possible.

In the Victorian planning system, the Bushfire Management Overlay (BMO) maps areas of Victoria that are at risk of extreme bushfire.

Currently there are significant areas of the State, including some areas affected by the 2009 Black Saturday bushfires, that are at risk from bushfire but are not included in the existing BMO.

Clearly the BMO needs to be updated to ensure that all areas of extreme bushfire hazard in Victoria are covered consistently. This action is a key element in the State Government's commitment to implement the recommendations of the 2009 Victorian Bushfires Royal Commission.

To address this issue, and following consultation with local government, the Victoria Planning Provisions and all planning schemes will be amended to update the BMO maps and State Planning Policy Framework – Bushfire.

Mapping Bushfire Hazard in Victoria

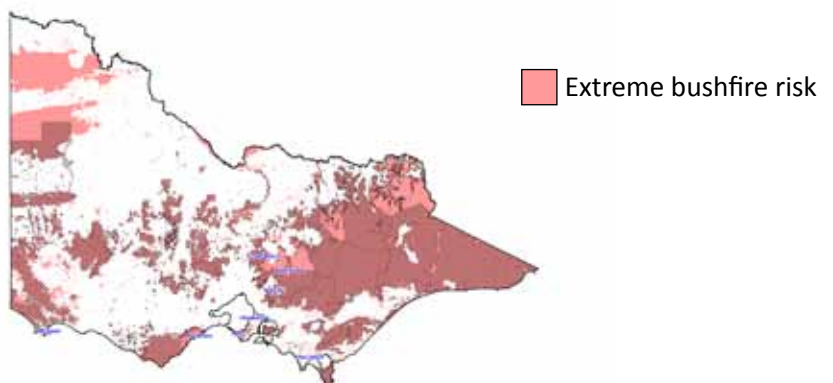
Bushfire hazard in Victoria is mapped and identified in both the planning and building systems.

Bushfire Prone Area (BPA)



The building system maps all levels of bushfire hazard in Victoria's designated Bushfire Prone Areas (<http://services.land.vic.gov.au/landchannel/content/>)

Bushfire Management Overlay (BMO)



The planning system maps extreme levels of bushfire hazard in Victoria's Bushfire Management Overlay (BMO). This overlay triggers landscape assessments and planning requirements in addition to the building requirements applied by the BPA above.

Why update bushfire hazard maps?

Updated maps will help to ensure that all areas of extreme bushfire hazard in Victoria are included in the Bushfire Management Overlay.

The BMO will ensure that bushfire risk is clearly identified and adequately considered in planning applications for new development or subdivision.

Comprehensive and up to date information helps councils to make planning decisions that ultimately can make communities more resilient to bushfires.

Why update the State Planning Policy Framework-Bushfire?

The State Planning Policy Framework – Bushfire will be updated to include reference to the Bushfire Prone Area map. This change further integrates the planning and building systems response to bushfire hazard.

The changes:

- clarify that bushfire hazard is not limited to areas of extreme bushfire hazard mapped by the Bushfire Management Overlay
- encourage a more integrated and strategic assessment of all bushfire hazard
- facilitate improved strategic planning by local councils, planning authorities and communities.

The process for introducing the changes

Targeted consultation is being undertaken with local councils prior to the updated Bushfire Management Overlay maps being introduced into planning schemes. Councils will have until mid-September 2016 to request any changes to the mapping.

Following consultation, these changes are currently expected to occur post September 2016.

© The State of Victoria Department of Environment, Land, Water and Planning 2015



This work is licensed under a Creative Commons Attribution 4.0 International licence. You are free to re-use the work under that licence, on the condition that you credit the State of Victoria as author. The licence does not apply to any images, photographs or branding, including the Victorian Coat of Arms, the Victorian Government logo and the Department of Environment, Land, Water and Planning (DELWP) logo. To view a copy of this licence, visit <http://creativecommons.org/licenses/by/4.0/>

ISBN 978-1-76047-201-6 (pdf/online)

Disclaimer

This publication may be of assistance to you but the State of Victoria and its employees do not guarantee that the publication is without flaw of any kind or is wholly appropriate for your particular purposes and therefore disclaims all liability for any error, loss or other consequence which may arise from you relying on any information in this publication.

Accessibility

If you would like to receive this publication in an alternative format, please telephone DELWP Customer Service Centre 136 186, email customer.service@delwp.vic.gov.au, via the National Relay Service on 133 677 www.relayservice.com.au. This document is also available in accessible Word format at www.delwp.vic.gov.au/planning