

Foster Community Report

Meeting notes from the Community Workshop
held Thursday 27 October 2016

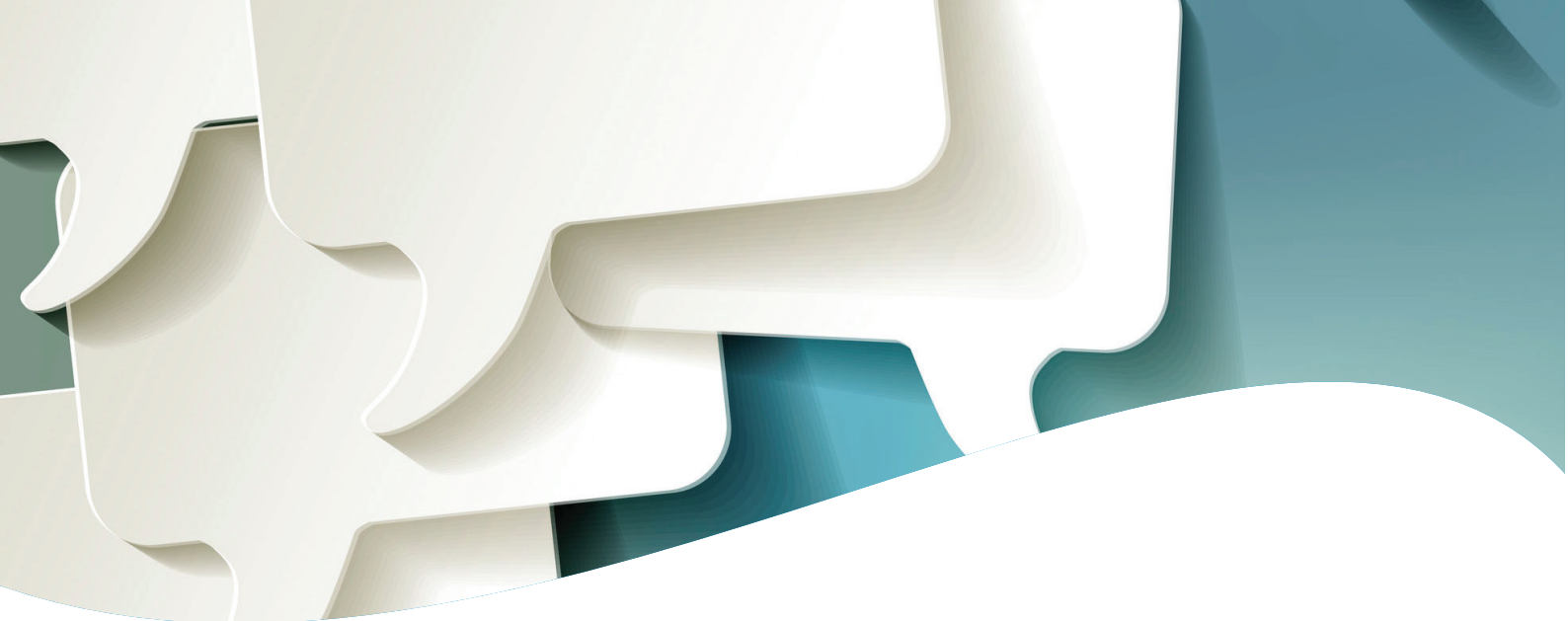


participate



South Gippsland
Shire Council





Introduction

South Gippsland Shire Council budgeted \$400,000 each to the towns of Foster, Korumburra, Mirboo North and Venus Bay for the community to allocate towards capital works for the 2017/18 program.

Residents were asked to vote on ideas pulled from their community plan and the Long Term Capital Works Program or provide ideas of their own on the Community Capital Works Allocation forum specific to their town.

oursay.org/southgippsland

Ideas that attracted a high amount of support online informed four community workshops hosted in each town in October/November 2016. [This report consolidates the data provided in the online forums and the verbatim community reports written by residents at the workshops.](#)

Engagement Process

Below is a data summary of the Foster Community Capital Works Allocation forum once voting had closed. oursay.org/southgippsland/foster

Online Forum Statistics

Foster Community Capital Works

31 August 2016 - 20 September 2016

111

people engaged

27

ideas

556

votes

2336

page views

9

social shares

1377

views for individual idea pages

46

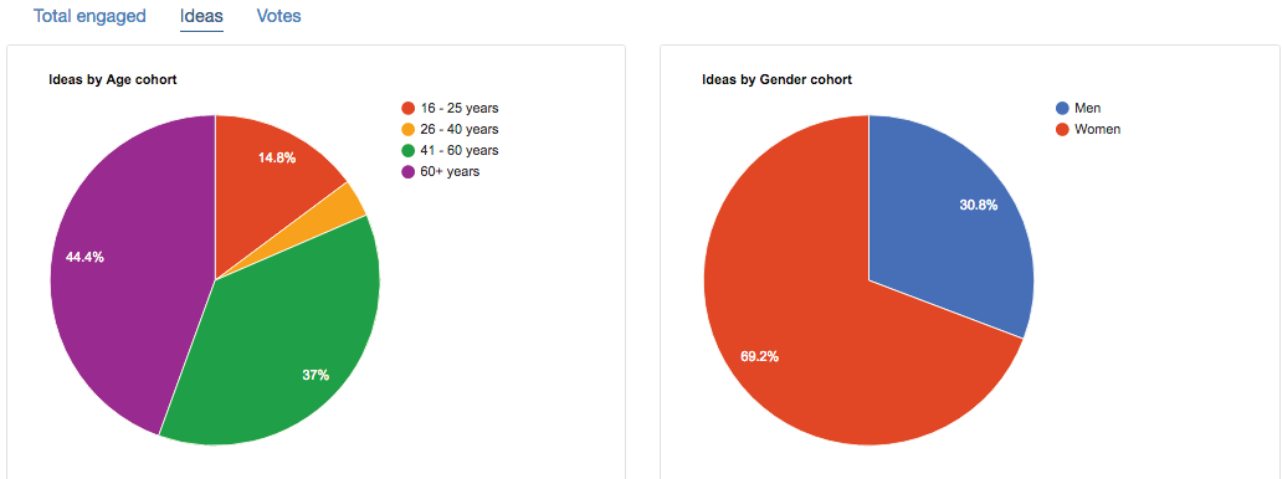
comments

by

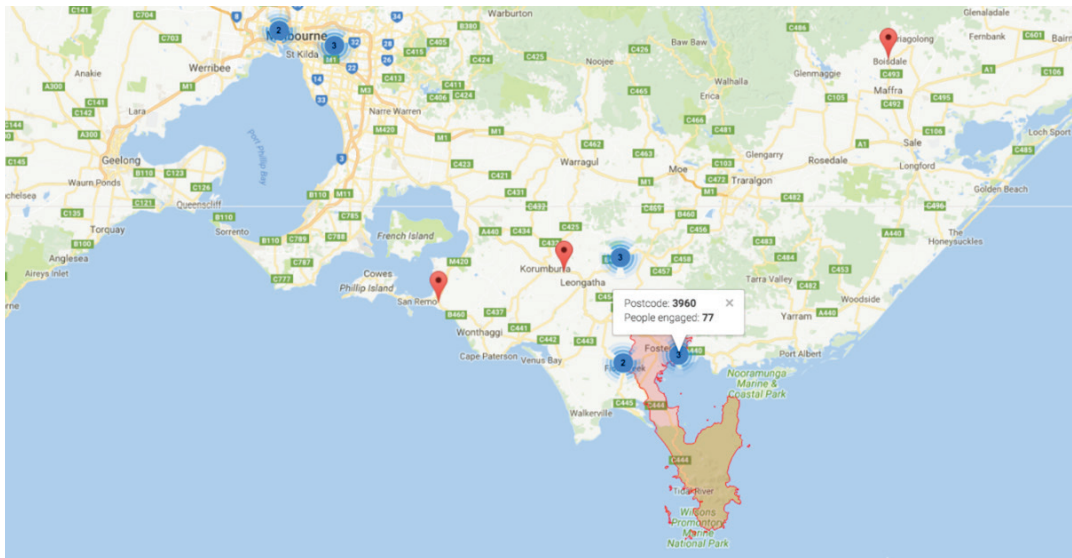
28

unique users

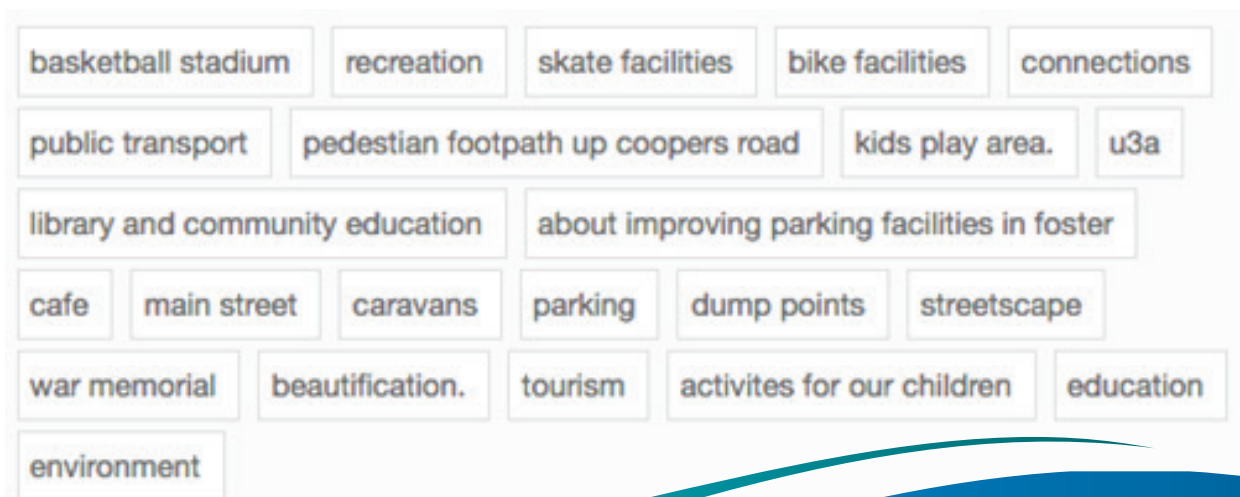
Age Cohort and Gender by Total Engaged



Ideas Posted by Location



Trending Topics and Themes



South Gippsland
Shire Council





Community Recommendations

All recommendations include notes written directly by the community at their workshop:

Recycled Water Project

Provide funding for infrastructure to Foster Showgrounds and Foster Golf Club that enables the use of recycled water from the waste water treatment plant just south of Foster. Presently both sporting bodies use potable water at considerable cost to maintain sporting facilities. The recycled water could also be directed to Prom Country Aged Care for their gardens. Benefit to the environment and preserves potable water whilst maintaining important sporting facilities.

What Can Council Do to Deliver this?

- *By acknowledging the overall benefit of the community and council asset*
- *Identifying the project as one that would warrant approval of funding in whole or part*
- *Work in partnership with other authorities (SGW etc).*
- *Only desktop feasibility study done from SGW side \$400,000 cost to do.*
- *Council should consider being flexible about applying its parameters to the infrastructure spending.*
- *Seems like all at our table have a positive response*
- *Look at other examples at other places*

What Can Community Do to Deliver This?

- *Will respond positively if approved – will benefit multiple users, flow on affect to other areas of the community*
- *Conserving water, less treated wastewater discharged*
- *Community might want to advocate to Council about the project itself and about modifying its guidelines*
- *Make suggestions of expanding the project and increasing benefits*
- *Follow up on precedents in other communities*
- *The community might think it is an indulgence*
- *Responsible thing to do Use of recycled water*
- *The community would like to see the project expanded*
- *Jo came along and wanted to support this idea*



South Gippsland
Shire Council





Community Recommendations

Library

Enlarge the library building to accommodate better facilities. The current space is very cramped, especially when babies' and children's activities are happening. More space is needed for storage apart from the shelving area, and a meeting room would provide space for library associated activities such as book discussion groups, author visits, Friends of the library meetings, U3A classes, and more. Online computers would not have to be placed so near the library entrance in the walkway to the loans desk. Modern library facilities such as genealogical resources and new types of literature, such as graphic novels could be accommodated. Study carrels and computer catalogues are at present placed in cramped corners, making uses of these unattractive.

What Can Council Do to Deliver this?

- *Too expensive*
- *Look at feasibility of new purpose built building for future funding*
- *Council could apply for a Living Library Grant and other grants to pay for it?*
- *Timeline not suit this projects guidelines – but can be modified*
- *Investigate viable options Should it be expanded out the front Should it go up*
- *Could another building be provided for Parks funded by the commercial rent*
- *There is a need and council should find work out how best to deal with this issue.*
- *Look at Ray Dower Motors?*
- *Demographics and new residents have a higher expectation of Library facilities*
- *Library provides a valuable socialization, importance of a physical space*

What Can Community Do to Deliver This?

- *Other preferable ways to spend the money*
- *Cost benefit doesn't equate*
- *Some parts of the community would be supportive*
- *Advocacy to Council to expand*
- *Should Council be commercial leasing? Should the building be used for community only?*
- *Expansion supported by most in community. Built too small in the first place*
- *Community wants to keep Parks Victoria in town as an employer*
- *The library is highly valued by the community*



*South Gippsland
Shire Council*





Community Recommendations

Devlin Street Reserve

Kids Park and BBQ at the in the reserve area between Devlin St and Wood Court. It is an over-grown Fire and Snake threat for local Houses, it could easily be made into nice grass area with a swing and/or slide and maybe a BBQ for Local people to enjoy.

What Can Council Do to Deliver this?

- *Too close to established parks*
- *Native vegetation issues*
- *Include in regular open space maintenance – or advertise*
- *Wrong solution for the issues raised.*
- *Probably do maintenance – advertise or increase what done.*
- *Could suggest that a friends group be set up and that the group could manage the area?*
- *This is a very specific project that limited appeal to the general community*

What Can Community Do to Deliver This?

- *Already have two established parks*
- *Child safety, limited parking*
- *Could be nice to have a walking trail through to connect*
- *Many want to keep to vegetation and not lose it*
- *We have enough parks already.*
- *Maintain weeds and underplant with indigenous vegetation.*
- *Foster has plenty of snakes anyway*
- *Set up a friends group*
- *Not of great appeal to the general community because of its location*



South Gippsland
Shire Council



What Can Community Do to Deliver This?

- *Consider putting it down stockyard creek reserve*
- *Supportive for child safety*
- *Good to have another connection from town & also a circuit (Bill Gurnett idea via Planning for Real process)*
- *Want bike connection as well as pedestrian.*
- *Use also to increase attraction to tourists/visitors to come into town.*
- *Like idea down the creek trail.*
- *Put forward alternative connections.*
- *The community would not see this as a priority.*
- *The bike riders would not support this idea*



South Gippsland
Shire Council





Community Recommendations

Look Out

Upgrade the lookout on the Foster-Fish Creek road - make it bigger with better parking, new bench, bin and signage on either side etc. It has a beautiful view for tourists and would encourage people to take photos and promote the area. Currently it is a dangerous area as visitors are often looking at the view and not the road. This would allow them to stop and take it all in.

What Can Council Do to Deliver this?

- *Not on council land, however modest improvement could be warranted – improve signage*
- *Could lobby VicRoads to make improvements*
- *Need to negotiate with VicRoads*
- *Contact the householder just below the site*
- *Good idea to improve parking*
- *Talk to Prom Country and Vic Roads*

What Can Community Do to Deliver This?

- *Modest improvement would be appropriate*
- *Roadside signs, grading, small amount of money could be spent*
- *Need safety taken into account.*
- *Is an issue with tourists suddenly stopping and turning into it.*
- *Not much space – not our land so not spend too much?*
- *This area is highly valued by the community*



*South Gippsland
Shire Council*





COMMUNITY

Emerging Trends

Many ideas of the community are not all on council land | Can seek \$ for \$ grants for some projects to extend the money – stadium, recycled water, rail trail | Effective use of money | Community interested in sustainability issues (environmental and social & economic) and enhancing current facilities – make it better by building on existing facilities | Use our money to get more money from outside | All more or less possible but some easier, less controversial & more timely than others | Recreation is the focus | Moving forward and improving facilities for our community | People attending - Very small group and many people with a vested interest not generally representative of our community.

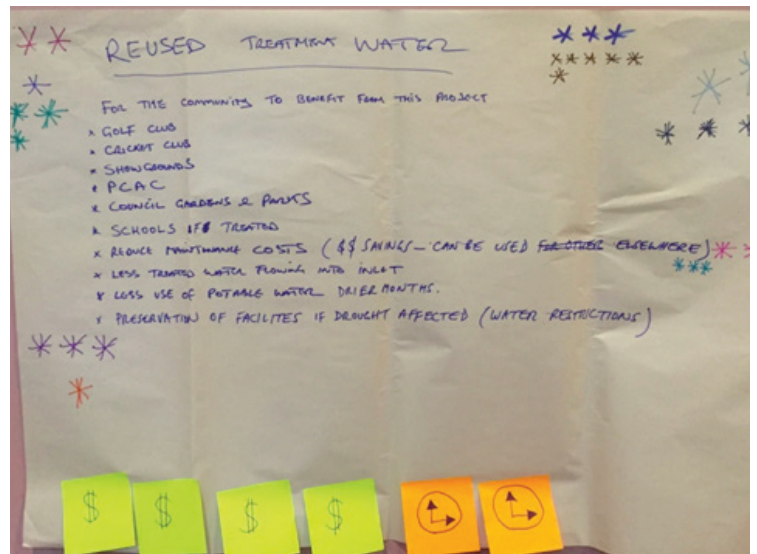
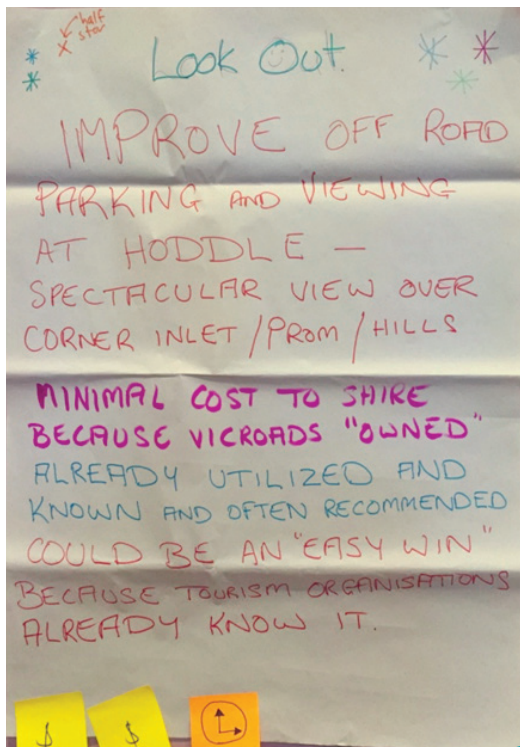
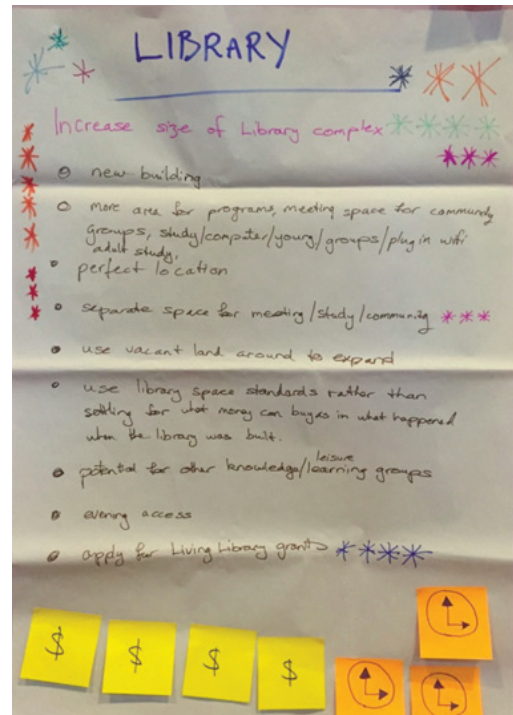
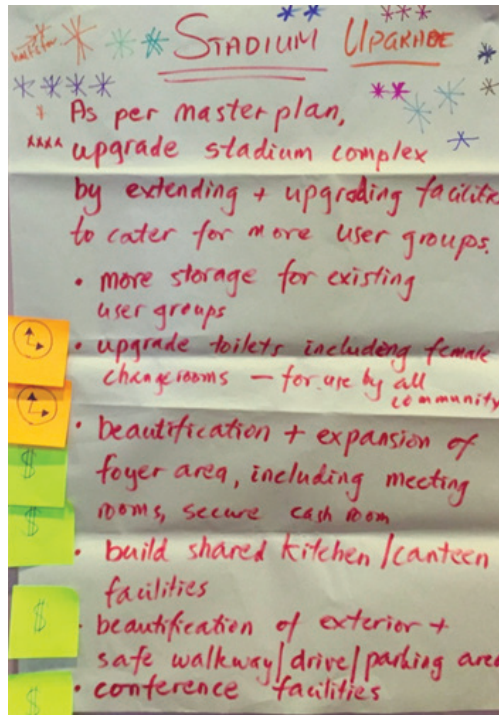
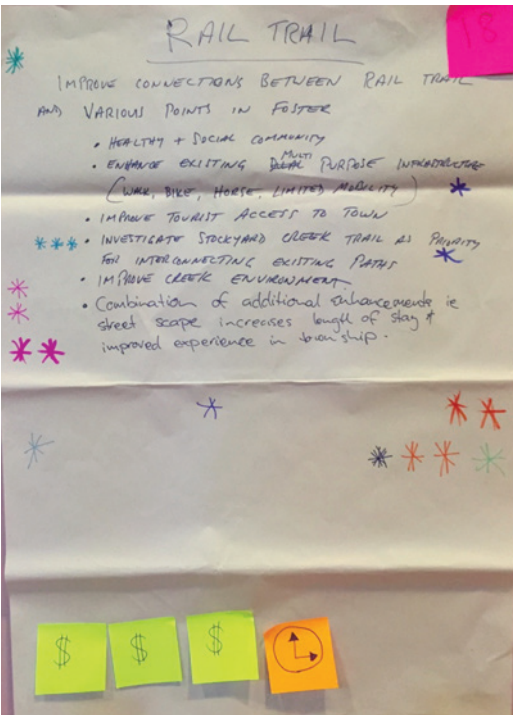
Community Recommendation

Participants recommended that the \$400,000 is used to implement recycled water infrastructure at the Foster Showgrounds and Foster Golf Club.

As this project was slightly out of the project guidelines (as part of the land chosen and the infrastructure required is not Council owned) participants were happy for the library to be followed up as a second recommendation if the first option is not feasible.

Results of Art Gallery Voting by Participants

The pictures below demonstrate the voting spread once projects were refined at the workshop.



South Gippsland
Shire Council

