



South Gippsland
Shire Council

South Gippsland Health and Wellbeing
South Gippsland
Vulnerable Communities
Profile
April 2020



South Gippsland Shire Council
9 Smith Street (Private Bag 4), Leongatha 3953
council@southgippsland.vic.gov.au
www.southgippsland.vic.gov.au

Vulnerable communities – South Gippsland Population Profile

9 April 2020

Vicki Bradley, Social Planning Officer, South Gippsland Shire Council

Population and housing data about the following groups will provide a picture of our vulnerable community. Further analysis currently unavailable is the cross tabulation of data to help look at localised concentration of disadvantaged groups. People with low literacy and no internet at home; lone person households with no internet and no motor vehicles; or people with a disability in low income households for example.

Contents

Total Population	4
People aged 65+ (seniors)	4
People aged 65 + by district 2016.....	4
Age structure – Five year age groups 65+	4
Map: Proportion of people aged 65+ (darker red has higher proportion)	5
Lone person households (people living alone)	5
Lone person households aged 65+.....	5
Older lone person households (aged 65 years and over) 2016.....	6
Map - Older lone person households (aged 65+)	6
People with a disability.....	7
Assistance needed by age group (years) 2016	7
Need for assistance with core activities by age and district 2016.....	8
Lone persons with a disability 2016	8
Lone persons with a disability 2016 chart.....	8
Disengaged youth (15-24 year olds neither in education nor employment).....	9
Disengaged youth neither in education nor employment by district	9
Low-income households	10
Map - Low income households.....	10
Low income / high debt – Housing stress	11
Housing stress by district.....	11
Rental stress	11
Rental stress by district.....	12
Percent renting households below the poverty line after paying rent.....	12

Renting social housing	13
Social housing by district.....	13
Mortgage Stress	14
Mortgage stress by district.....	14
High mortgage repayments	15
Households paying high mortgage repayments (\$2600 or more), 2016	15
South Gippsland socio-economic indicators for area (SEIFA) 2016.....	15
Single parent families	16
Map Single proportion of single parent families.....	16
Blended families	16
Families with no parent or partner in paid employment 2016 South Gippsland	16
Priority 1 families for kindergarten access Department of Education.....	17
Kindergarten enrolments and priority of access 2018, 2019, 2020	17
Welfare recipients September 2019	18
Centrelink September 2019	18
Internet access at home or affordability of data.....	19
Mobile phone coverage	19
Car ownership – households without a car	20
Map: Households without a car	20
Households without a car by district	20
People at risk in the community	21
Family violence incidents December 2019	21
Family incidents dashboard 2109.....	21
Children in out of home care / kinship care / child protection/ court orders	21
Rates of substantiated child abuse	21
Food insecurity	22
People who ran out of food and could not afford to buy more 2011	22
Mental Illness	22
Mental Illness	22
Alcohol	23
Alcohol harm	23
References.....	24
Appendix 1 – How to navigate id Social Atlas.....	25

Total Population

Our official population is **29,914** (ABS Estimated Resident Population 2019) released March 2020

People aged 65+ (seniors)

As 65 is the traditional retirement age, the population aged 65+ is a good indicator the retired or non-working population.

South Gippsland has 6,798 people aged 65+. A higher proportion aged 65+ (23.7%) than Regional Victoria (20.4%)
Age groups with the greatest population increase between 2011 and 2016 are all over 65.

People aged 65 + by district 2016

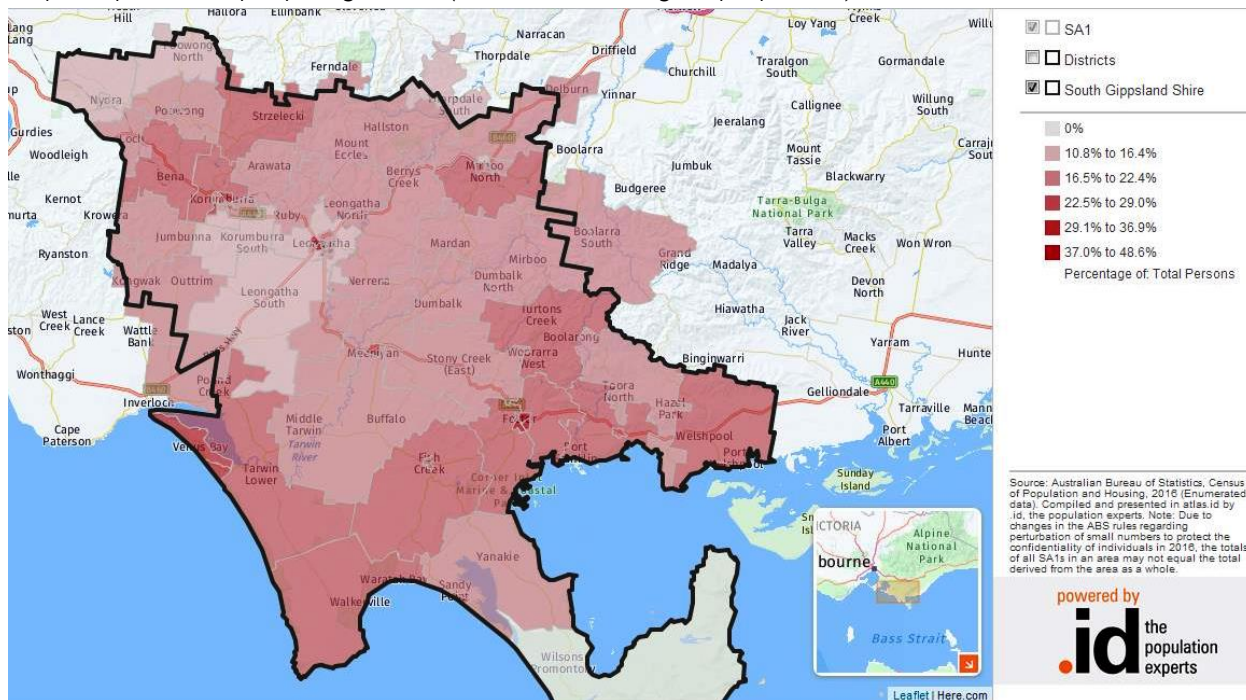
Area	Number	Total population	Percent %
Korumburra	1,090	4,488	24.3
Leongatha	1,340	5,642	23.8
Mirboo North - Baromi	513	2,334	22.0
Nyora - Poowong and District	450	2,777	16.2
Rural North East	609	2,871	21.2
Rural West	443	2,395	18.5
South East Coastal District	1,636	5,405	30.3
South West Coastal District	736	2,847	25.9
South Gippsland Shire	6,798	28,692	23.7

Age structure – Five year age groups 65+

South Gippsland Shire - Total persons (Usual residence)	2016			2011			Change 2011 to 2016
	Number	%	Regional VIC %	Number	%	Regional VIC %	
Five year age groups (years)							
65 to 69	2,351	8.2	6.6	1,713	6.3	5.2	+638
70 to 74	1,688	5.9	4.9	1,281	4.7	4.1	+407
75 to 79	1,160	4.0	3.6	934	3.4	3.2	+226
80 to 84	791	2.8	2.6	740	2.7	2.6	+51
85 and over	808	2.8	2.7	672	2.5	2.3	+136

Census 2016 and Id consulting

Map: Proportion of people aged 65+ (darker red has higher proportion)



To access an interactive version of this map go to <https://atlas.id.com.au/south-gippsland> (see appendix A for instructions)

Lone person households (people living alone)

It is important to view lone person households in conjunction with age structure, to identify the nature of the household. Elderly lone person households have very different requirements to young lone person households. Older lone person households or people with disabilities living alone are amongst our vulnerable community while younger people are not.

Leongatha has the highest proportion of young lone person households aged 15 - 44 possibly comprised of young professionals. Some young people with disabilities live in individual accommodation with their carers in Leongatha. This household would be registered as a lone household because the carer would be registered as living at a different address.

Lone person households aged 65+

People living alone may not have the support network of older people living in larger households and could be vulnerable in an emergency situation.

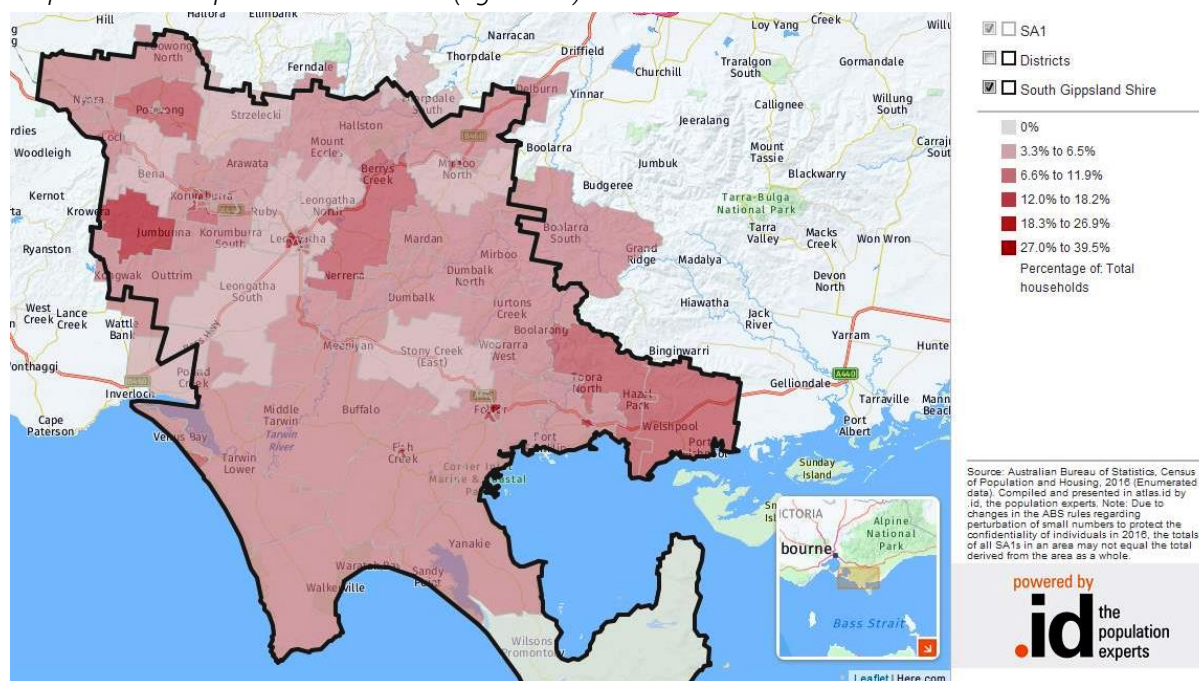
Older lone person households often indicate elderly individuals needing relevant support services. People living in retirement villages but not nursing homes are included in this data.

South Gippsland has 1,509 people aged 65+ living alone a higher proportion of the total population living alone (12.9%) than Regional Victoria (12.1%) and Victorian (9.2%).
Leongatha, Korumburra, Mirboo North and Foster are areas with the highest proportion of lone person households.

Older lone person households (aged 65 years and over) 2016

Area	Number	Total households	Percent %
Korumburra	271	1,761	15.4
Leongatha	359	2,253	15.9
Mirboo North - Baromi	101	897	11.3
Nyora - Poowong and District	93	1,047	8.9
Rural North East	101	1,130	8.9
Rural West	76	846	9.0
South East Coastal District (includes Foster)	385	2,397	16.1
South West Coastal District (includes Venus Bay)	119	1,255	9.4
South Gippsland Shire	1,509	11,718	12.9
Regional VIC	69,934	577,736	12.1
Victoria	205,333	2,242,285	9.2

Map - Older lone person households (aged 65+)



To access an interactive version of this map go to <https://atlas.id.com.au/south-gippsland> (see appendix A for instructions)

People with a disability

People in need of assistance due to a severe or profound disability may have both communication issues and mobility issues in an emergency management situation and are likely to need assistance to evacuate.

In 2016, 1,585 people (or 5.5% of the population) in South Gippsland Shire reported needing help in their day-to-day lives due to disability.

This data identifies people who report a need for assistance due to a 'profound or severe core activity limitation'. This population is defined as people who need assistance in their day to day lives with any or all of the following activities – self-care, body movements or communication – because of a disability, long-term health condition, or old age.

Assistance needed by age group (years) 2016

	Number	% of total age group	Regional VIC %
0 to 4	10	0.6	1.2
5 to 9	52	2.9	3.8
10 to 19	91	2.7	3.7
20 to 59	447	3.5	3.5
60 to 64	112	4.9	6.3
65 to 69	139	5.9	7.3
70 to 74	126	7.5	9.2
75 to 79	120	10.3	13.3
80 to 84	144	18.3	22.3
85 and over	347	42.7	42.3
Total persons needing assistance	1,585	5.5	6.0

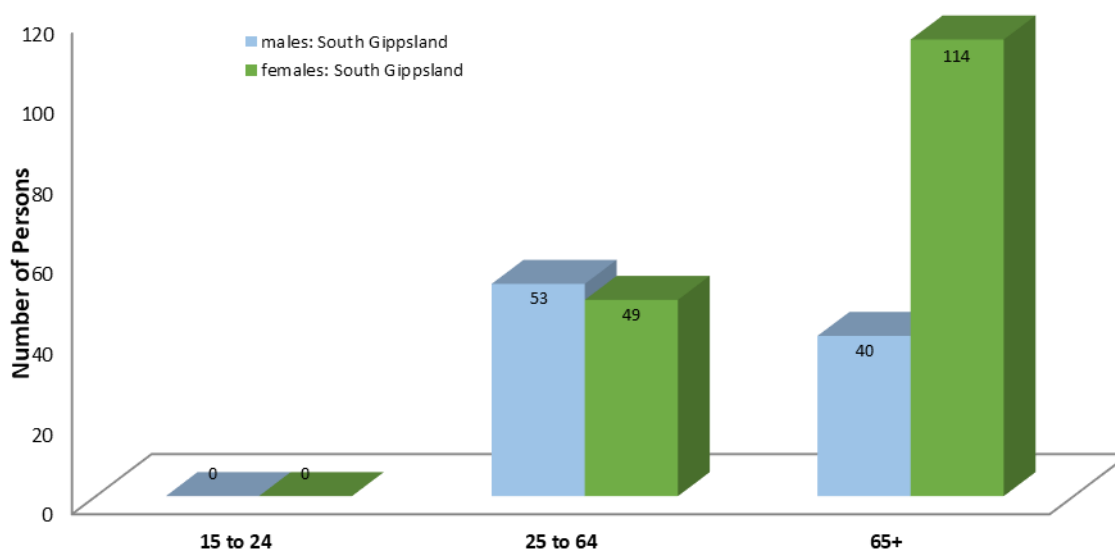
Need for assistance with core activities by age and district 2016

Age	South Gippsland		Korumburra		Leongatha		Mirboo North		Nyora Poowong Loch		Rural North East		Rural North West		South East Coastal District		South West Coastal District	
	No.	%	No.	%	No.	%	No.	%	No.	%	No.	%	No.	%	No.	%	No.	%
0 to 4	10	0.63	0		0		0		0		0		0		0		0	
5 to 9	52	3.29	7	2.30	13	3.65	8	4.78	6	4.83	6	5.57	1	2.56	0		3	2.57
10 to 19	91	5.74	10	3.27	29	8.15	7	4.27	9	7.86	6	6.20	0		0		5	4.28
20 to 59	447	28.20	56	18.34	59	16.57	34	20.31	48	38.94	19	18.51	7	9.41	45	13.47	25	21.92
60 to 64	112	7.07	12	3.93	17	4.78	10	6.06	3	2.42	11	10.59	1	1.55	29	8.89	12	10.27
65 to 69	139	8.77	27	8.84	19	5.34	14	8.43	13	10.47	14	13.69	8	10.96	17	5.07	10	8.56
70 to 74	126	7.95	18	5.89	19	5.34	13	8.25	6	5.39	7	7.28	9	12.75	19	5.89	18	15.62
75 to 79	120	7.57	14	4.58	28	7.87	16	9.81	4	3.22	4	4.32	4	5.42	20	6.01	13	11.66
80 to 84	144	9.09	34	11.13	29	8.15	21	12.53	3	2.97	4	3.75	2	2.98	28	8.47	10	9.09
85 and over	347	21.89	83	27.18	81	22.75	36	21.49	12	10.26	0		3	3.98	71	21.21	0	
Total	1585		305		356		167		124		107		77		334		116	

Lone persons with a disability 2016

	males	females
15 to 24	0	0
25 to 64	53	49
65+	40	114
Total	93	163

Lone persons with a disability 2016 chart



Disengaged youth (15-24 year olds neither in education nor employment)

In 2016, 9.9% of South Gippsland Shire's population aged 15 to 24 years were not employed or attending an education institute compared to 10.6% in Regional VIC.
Korumburra had the highest number and percentage of disengaged youth

Disengaged youth neither in education nor employment by district

Area	Number	Total persons aged 15 to 24 years	Percent %
Korumburra	64	451	14.2
Leongatha	58	576	10.1
Mirboo North - Baromi	29	255	11.5
Nyora - Poowong and District	30	250	11.9
Rural North East	19	256	7.4
Rural West	8	268	3.0
South East Coastal District	30	433	6.9
South West Coastal District	21	224	9.4
South Gippsland Shire	273	2,767	9.9

The five areas with the highest percentages were:

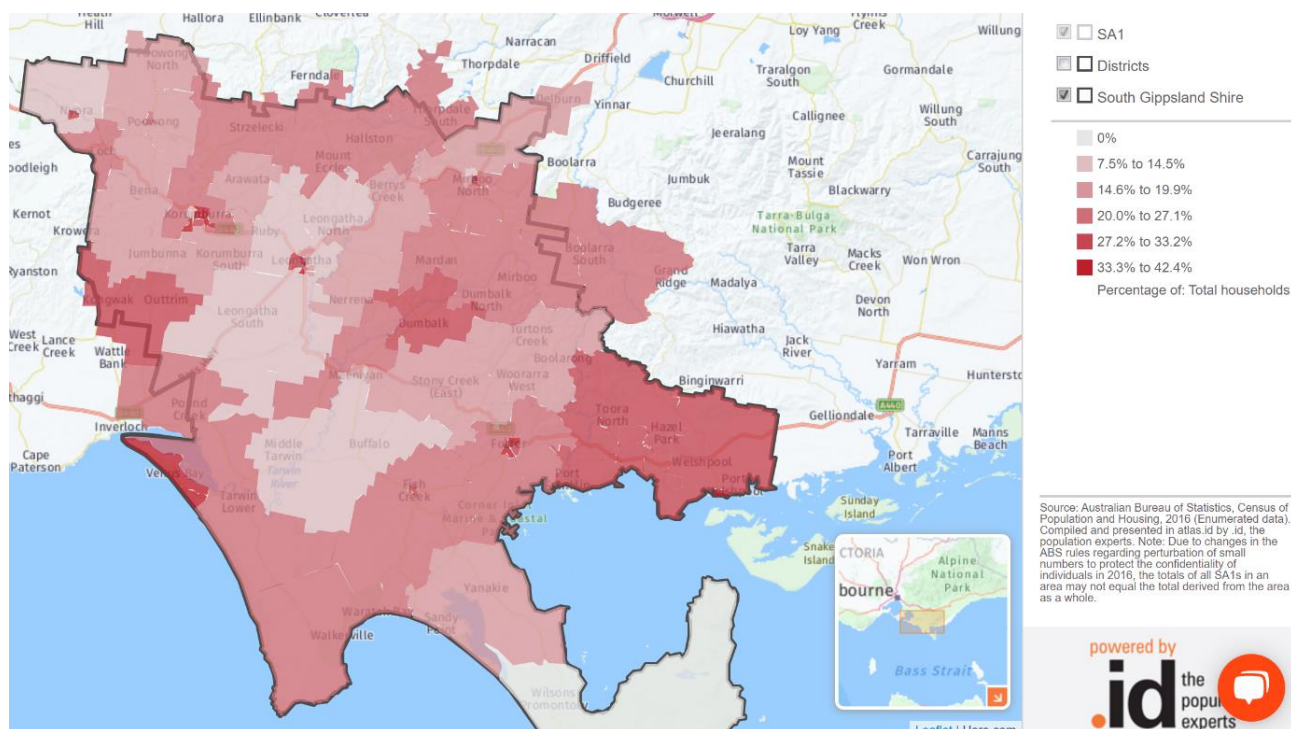
- Korumburra (14.2%)
- Nyora - Poowong and District (11.9%)
- Mirboo North - Baromi (11.5%)
- Leongatha (10.1%)
- South West Coastal District (9.4%)

Low-income households (receiving less than \$650 per week - bottom 25% of Australian incomes)

South Gippsland has a higher proportion of low income households 25% compared to Regional Victoria 22.9%

The five areas with the highest percentages were: Korumburra (29.1%); South East Coastal District (28.8%); South West Coastal District (25.3%); Leongatha (24.1%); and Rural North East (22.1%)

Map - Low income households



To access an interactive version of this map go to <https://atlas.id.com.au/south-gippsland> (see appendix A for instructions)

Low income / high debt – Housing stress

Housing Stress is defined as per the NATSEM (National Centre for Social and Economic Modelling) model as households in the lowest 40% of incomes who are paying more than 30% of their usual gross weekly income on housing costs.

Korumburra had the highest proportion of people experiencing housing stress in South Gippsland

The five areas with the highest percentages were:

- Korumburra (12.7%)
- Mirboo North - Baromi (10.0%)
- Rural West (9.6%)
- Leongatha (9.4%)
- Rural North East (9.1%)

Housing stress by district

Area	Number	Percent %
Korumburra	224	12.7
Leongatha	211	9.4
Mirboo North - Baromi	90	10.0
Nyora - Poowong and District	70	6.6
Rural North East	103	9.1
Rural West	82	9.6
South East Coastal District	200	8.3
South West Coastal District	97	7.7
South Gippsland Shire	1,135	9.7
Regional VIC	60,403	10.5

Rental stress

Rental Stress is defined as per the NATSEM (National Centre for Social and Economic Modelling) model as households in the lowest 40% of incomes, who are paying more than 30% of their usual gross weekly income on rent.

In 2016 40.9% of renting households in Korumburra were experiencing rental stress, the highest in the Shire.

Overall 31.3% of South Gippsland Shire's renting households were experiencing rental stress compared to 30.3% in Regional VIC

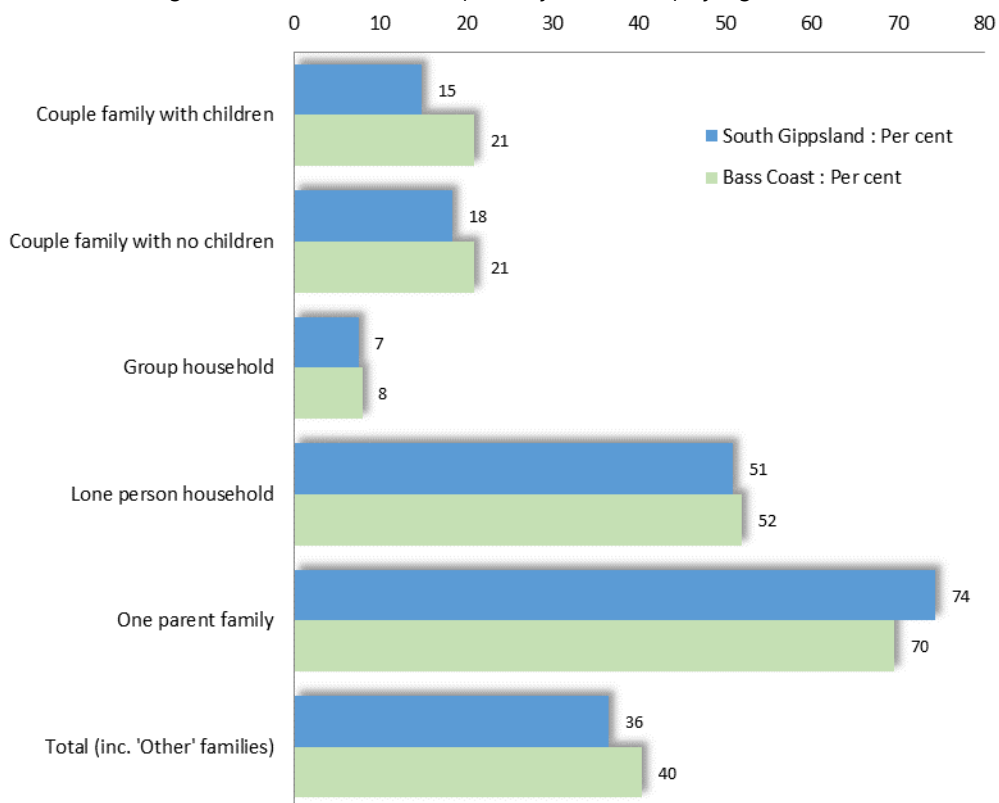
Proportions ranged from a low of 17.1% in Nyora - Poowong and District to a high of 40.9% in Korumburra. The five areas with the highest percentages were:

- Korumburra (40.9%)
- Leongatha (29.5%)
- Rural West (23.2%)
- South West Coastal District (22.1%)
- South East Coastal District (20.8%)

Rental stress by district

Area	Number	Total renting households	Percent %
Korumburra	152	372	40.9
Leongatha	157	532	29.5
Mirboo North - Baromi	23	115	19.8
Nyora - Poowong and District	21	124	17.1
Rural North East	21	124	17.1
Rural West	27	115	23.2
South East Coastal District	85	409	20.8
South West Coastal District	43	194	22.1
South Gippsland Shire	646	2,067	31.3
Regional VIC	41,768	137,819	30.3

Percent renting households below the poverty line after paying rent



Renting social housing

In 2016, 1.8% of South Gippsland Shire's households were renting their dwelling from a government authority (also known as Housing Commission) compared to 3.3% in Regional VIC.

Social housing by district

Area	Number	Total households	Percent %
Korumburra	66	1,761	3.7
Leongatha	70	2,253	3.1
Mirboo North	18	120	15.0
South East Coastal District - Foster	34	555	6.1
South East Coastal District - Toora	19	207	9.2
South West Coastal District - Meeniyan	7	180	3.9
South Gippsland Shire	215	11,718	1.8
Latrobe - Gippsland SA4	3,436	111,634	3.1
Victoria	62,248	2,242,285	2.8

The five areas with the highest proportion of households renting social housing were:

- Korumburra (3.7%)
- Leongatha (3.1%)
- South East Coastal District (2.2%) Rates within Foster and Toora are much higher when compared to the smaller town populations
- Mirboo North - Baromi (2.0%) – Rates within Mirboo North are much higher
- South West Coastal District (0.6%) – All housing is in Meeniyan. When calculating percentage to the smaller population the proportion is higher

There were no households renting social housing in Nyora, Poowong and District, Rural North East and Rural West.

Mortgage Stress

Mortgage Stress is defined as per the NATSEM (National Centre for Social and Economic Modelling) model as households in the lowest 40% of incomes who are paying more than 30% of their usual gross weekly income on home loan repayments.

South Gippsland has a higher proportion of households experiencing mortgage stress, 13.4% compared to 10.3% in Regional VIC

The five areas with the highest percentages were:

- Rural North East (17.0%)
- Rural West (16.5%)
- Mirboo North - Baromi (12.4%)
- South East Coastal District (11.2%)
- South West Coastal District (9.9%)

Mortgage stress by district

Area	Number	Total households with a mortgage	Percent %
Korumburra	56	588	9.5
Leongatha	47	660	7.1
Mirboo North - Baromi	39	316	12.4
Nyora - Poowong and District	41	477	8.5
Rural North East	64	374	17.0
Rural West	51	306	16.5
South East Coastal District	67	600	11.2
South West Coastal District	34	347	9.9
South Gippsland Shire	494	3,695	13.4
Regional VIC	18,633	180,137	10.3

High mortgage repayments

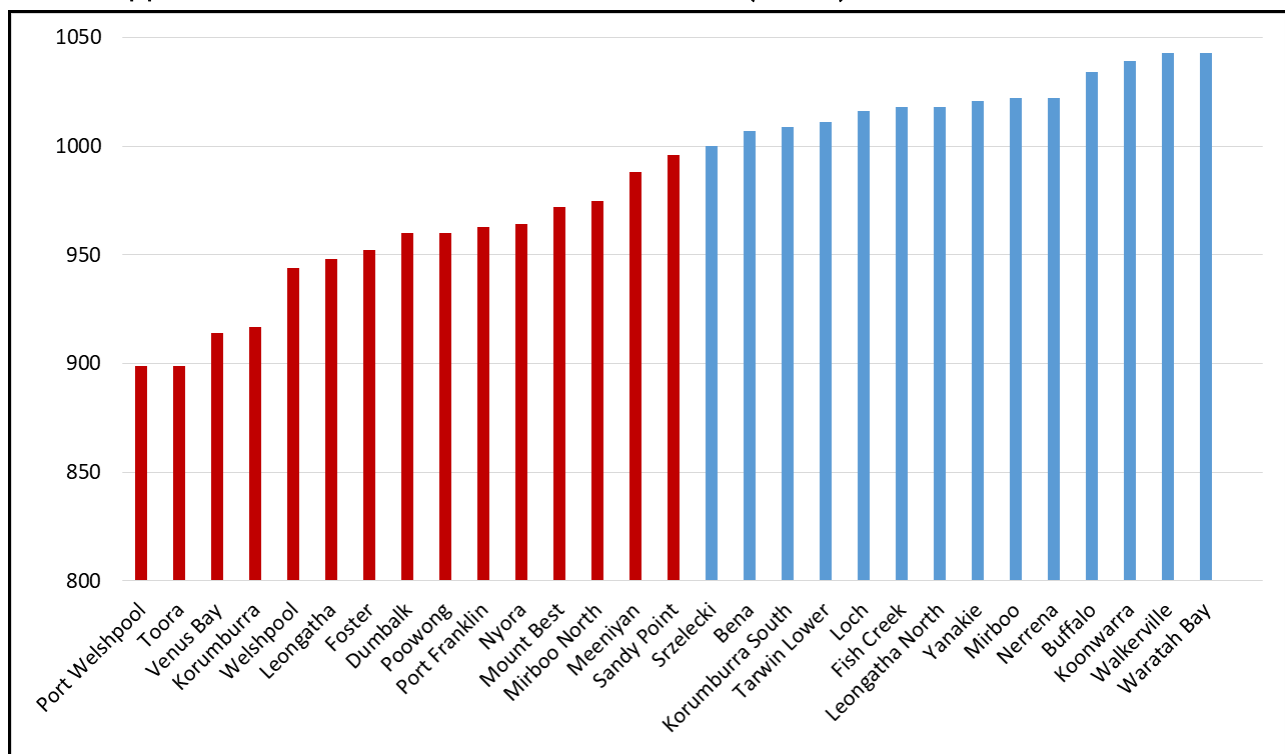
In 2016, 9.2% of South Gippsland Shire's households who were purchasing their dwelling were paying more than \$2,600 per month in mortgage repayments compared to 9.0% in Regional VIC.

\$2,600 per month was chosen as the threshold for high repayments because it is close to the top 25% of mortgage repayments in Australia in 2016.

Households paying high mortgage repayments (\$2600 or more), 2016

Area	Number	Total households with a mortgage	Percent %
Korumburra	35	558	6.2
Leongatha	39	646	6.0
Mirboo North - Baromi	19	268	6.9
Nyora - Poowong and District	45	441	10.1
Rural North East	39	347	11.2
Rural West	60	298	20.1
South East Coastal District	40	538	7.4
South West Coastal District	19	333	5.8
South Gippsland Shire	338	3,689	9.2
Regional VIC	16,258	180,151	9.0

South Gippsland socio-economic indicators for area (SEIFA) 2016



ABS SEIFA 2016 by State Suburb Code

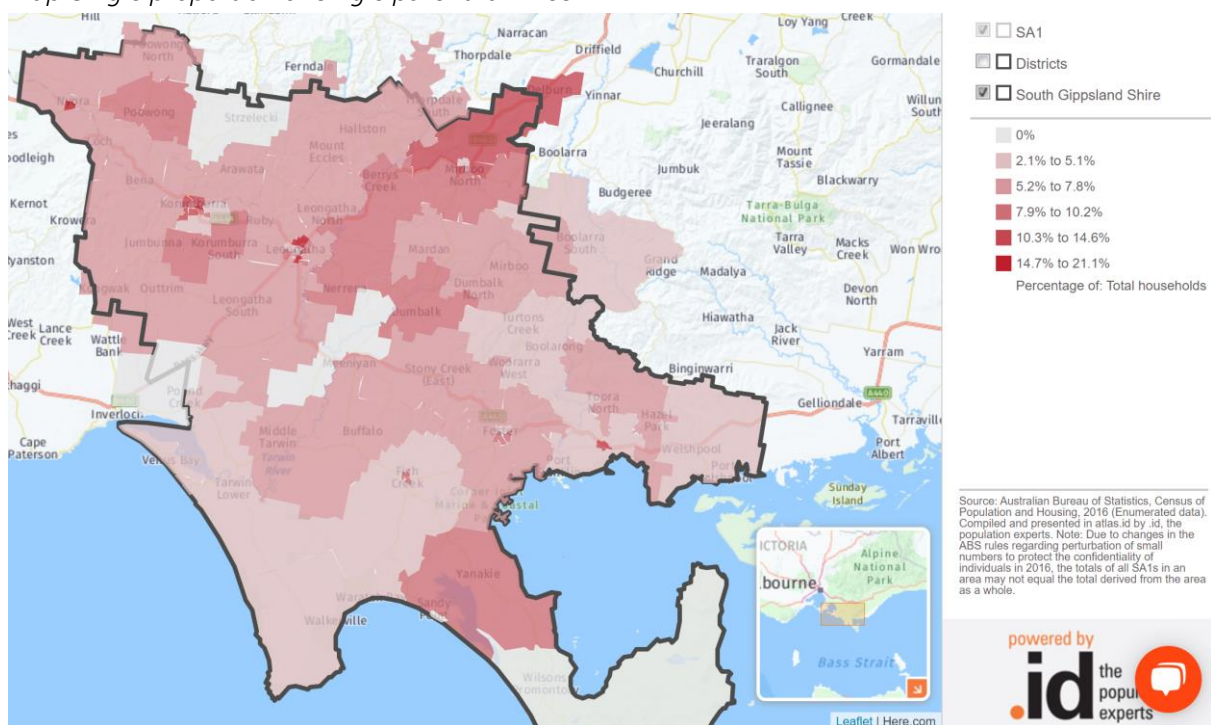
Single parent families

In 2016, 8.2% of South Gippsland Shire's total families were classed as one parent families compared to 10.1% in Regional VIC.

The five areas with the highest proportion of single parent families were:

- Korumburra (10.3%)
- Mirboo North - Baromi (9.8%)
- Leongatha (9.4%)
- Nyora - Poowong and District (9.2%)
- Rural West (6.7%)

Map Single proportion of single parent families



To access an interactive version of this map go to <https://atlas.id.com.au/south-gippsland> (see appendix A for instructions)

Blended families

Overall, 7.2% of total couple families with children were step families, and 4.9% were blended families.

Families with no parent or partner in paid employment 2016 South Gippsland

	Number	Per cent
One parent family	458	46.5
Couple family	220	7.7
Couple & one-parent families	678	17.6

Priority 1 families for kindergarten access Department of Education

Children who receive priority access to kindergarten come from a range of criteria identified by the Department of Education. The criteria identify vulnerable children based on one or more of the following:

- children at risk of abuse or neglect;
- children in out of home care;
- Aboriginal and Torres Strait Islander children;
- asylum seeker and refugee children;
- children eligible for the kindergarten fee subsidy (parent holds a Commonwealth Health Care Card, Pensioner Concession Card, Veteran's Affairs Card or multiple birth children
- children with additional needs defined as children who require additional assistance in order to fully participate in the kindergarten program; require a combination of services which are individually planned; have identified specific disability or developmental delay.

In 2020 a total of 122 children (35%) met priority criteria for 4 year older kindergarten enrolments and 79 children (28%) met the criteria for 3 year old kindergarten.

Kindergarten enrolments and priority of access 2018, 2019, 2020

Town	2018			2019			2020 4YO			2020 3YO		
	Total No. Children	No. POA	% POA	Total No. Children	No. POA	% POA	Total No. Children	No. POA	% POA	Total No. Children	No. POA	% POA
Leongatha	128	48	38%	127	36	28%	120	38	32%	98	28	29%
Korumburra	53	23	43%	68	29	43%	63	24	38%	60	20	33%
Loch	25	10	40%	25	7	28%	21	6	29%	14	4	29%
Poowong	17	8	47%	21	9	43%	18	7	39%	16	3	19%
Mirboo North	37	17	46%	28	11	39%	38	15	39%	23	7	30%
Meeniyan	23	8	35%	22	8	36%	27	9	33%	17	6	35%
Foster	28	12	43%	34	14	41%	29	14	48%	17	2	12%
Fish Creek	28	6	21%	21	4	19%	15	4	27%	22	5	23%
Toora	14	9	64%	16	7	44%	6	3	50%	12	3	25%
Welshpool							11	2	18%	8	1	13%
South Gippsland	353	141	40%	362	125	35%	348	122	35%	287	79	28%

Welfare recipients September 2019

In June 2019 a greater proportion of South Gippsland residents received payments than Victoria in the following categories

Parenting Payment Single / Population Females 20-44 (86% greater than Victoria)

Parenting Payment - partnered / Population Female 20-45 (42% greater than Victoria)

Newstart Allowance / Population 18-64 (31% greater than Victoria)

Disability Pension / Total population (27% greater than Victoria)

Aged Pension/ Population 65+ (3% greater than Victoria)

Health Care Card per total population was similar to Victoria

A lower proportion of people sought rent assistance (-14%)

Centrelink September 2019

	South Gippsland	Victoria	South Gippsland % greater or less than Victoria
RATIOS			
Newstart Allowance / Population 18-64 (%)	4.9	3.8	31
Parenting Payment Single / Population Females 20-44 (%)	3.7	2.0	86
Parenting Payment - partnered / Population Female 20-45 (%)	1.0	0.7	42
Disability Pension / Total population (%)	3.5	2.8	27
Aged Pension/ Population 65+ (%)	61	59.4	3
Health Care Card / Total population (%)	5.8	5.8	0
Rent Assistance/Occupied Dwellings (%)	9.5	11.1	-14
NUMBERS			
Pensioner Concession Card	6,731	1,028,519	
Health Care Card	1,670	380,834	
Age Pension	4,403	607,598	
Commonwealth Seniors Health Card	929	99,943	
Disability Support Pension	1,040	181,844	
Carer Allowance	759	166,348	
Carer Payment	324	69,726	
Parenting Payment Partnered	68	17,525	
Parenting Payment Single	234	48,079	
Newstart Allowance	799	154,609	
Youth Allowance other	50	14,769	
Youth Allowance student and apprentice	84	56,914	
ABSTUDY Living allowance	5	1,002	
ABSTUDY Non-living allowance	5	1,093	
Austudy	26	10,434	
Carer Allowance Child Health Care Card only	15	3,567	

Family Tax Benefit Part A	1,725	343,582	
Family Tax Benefit Part B	1,265	270,545	
Low Income Card	473	92,768	
Sickness Allowance	10	1,269	
Wife Pension Partner on Age Pension	5	1,000	
Wife Pension Partner on Disability Support Pension	6	847	
Widow Allowance	11	2,113	
Commonwealth Rent Assistance	1,244	283,467	

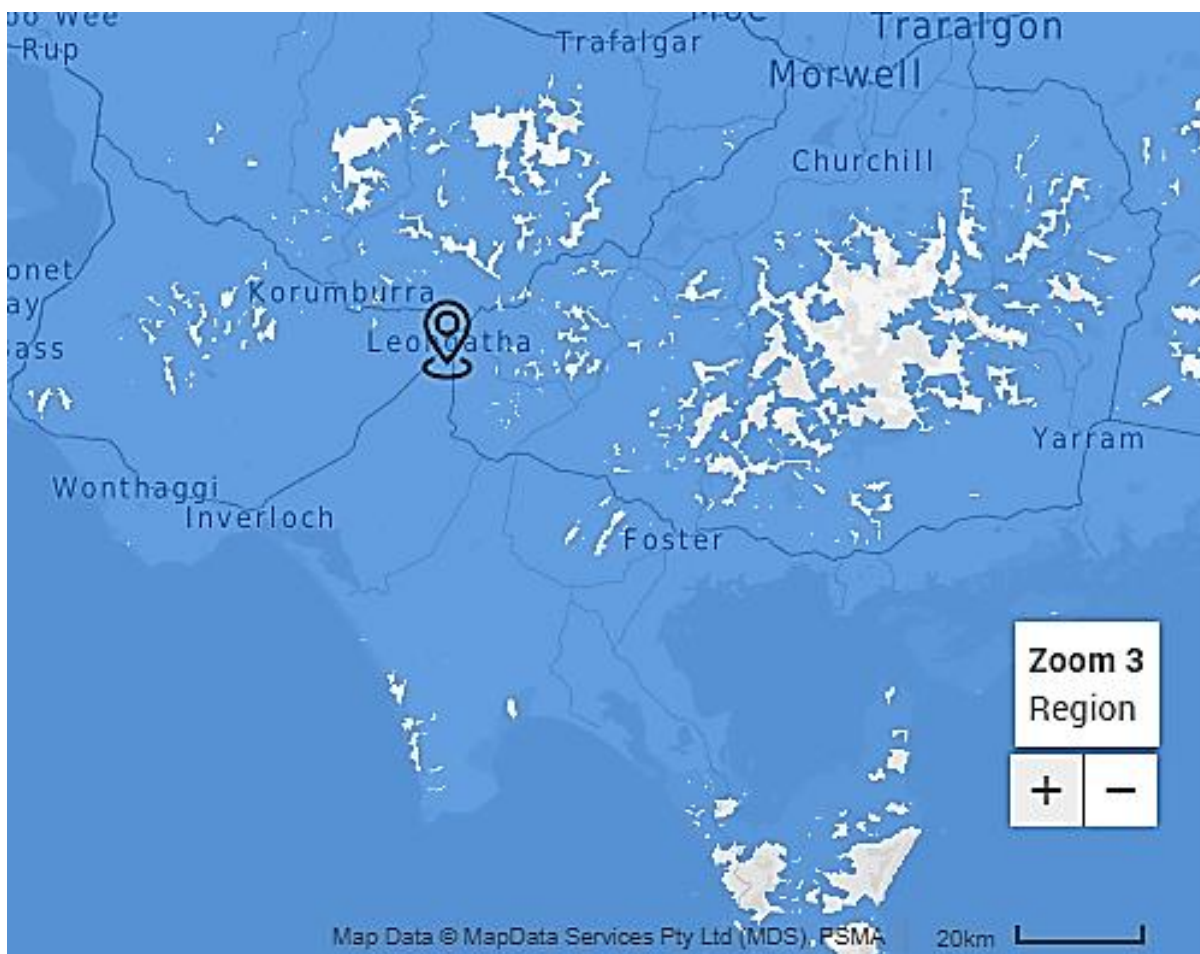
DSS payment demographic data accessed 9 April 2020 <https://data.gov.au/dataset/ds-dga-cff2ae8a-55e4-47db-a66d-e177fe0ac6a0/details>

Internet access at home or affordability of data

In 2016 73.1% of homes in South Gippsland had an internet connection. This does not account for people relying on data via mobile phones. Local service providers report a proportion of younger families unable to afford phone data regularly each month. Many rely on using Wi-Fi in libraries or take away food chains. Under these circumstances people find it difficult to manage online transactions and to download forms for organisations such as Centrelink.

Mobile phone coverage

There are still areas in South Gippsland with neither 3G nor 4G mobile telephone coverage



Source <https://www.telstra.com.au/coverage-networks/our-coverage>

Car ownership – households without a car

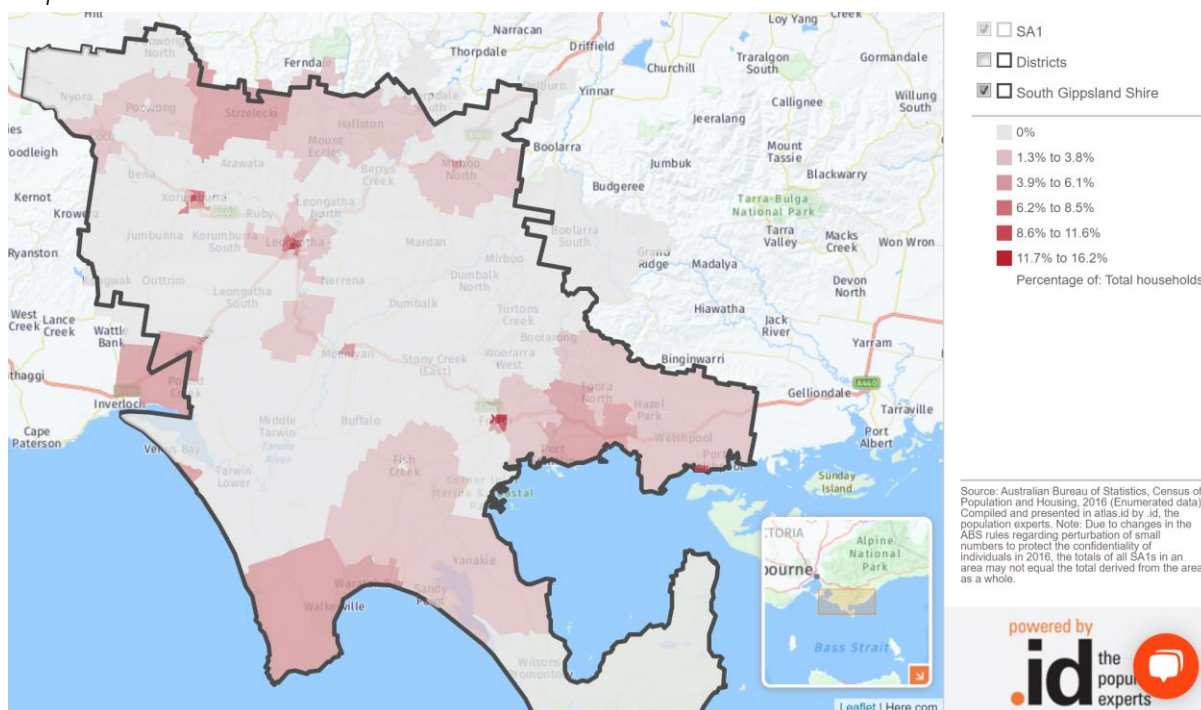
With limited public transport, households without a motor vehicle can be disadvantaged.

Overall South Gippsland has high car ownership by necessity due to limited public transport. In 2016, 3.5% of South Gippsland Shire's households did not have a car compared to 5.1% in Regional VIC.

In 2016 there were 414 households without a car in South Gippsland
6% of single parent families with children under 15 years have no car in South Gippsland

The map below indicates areas outside towns where households do not own cars and there is no public transport.

Map: Households without a car



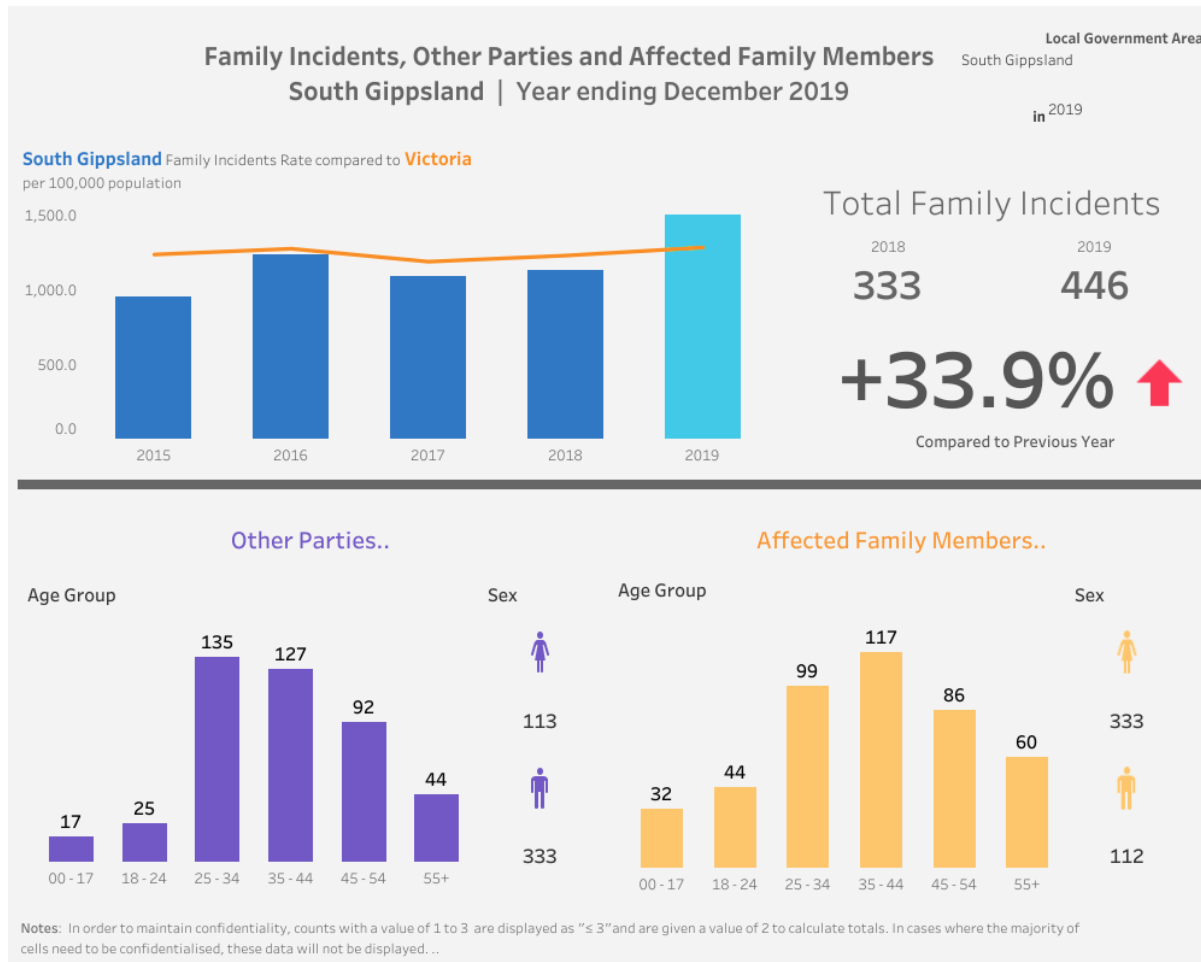
Households without a car by district

Area	Number	Total population	Percent %
Korumburra	92	1,761	5.2
Leongatha	136	2,253	6.0
Mirboo North - Baromi	22	897	2.4
Nyora - Poowong and District	7	1,047	0.7
Rural North East	9	1,130	0.8
Rural West	3	846	0.4
South East Coastal District	112	2,397	4.7
South West Coastal District	27	1,255	2.2
South Gippsland Shire	414	11,718	3.5

People at risk in the community

Family violence incidents December 2019

Family incidents dashboard 2109



Children in out of home care / kinship care / child protection/ court orders

In 2020 South Gippsland has
 15 children aged 0 – 6 known to child protection, in out of home care or court orders
 43 children, aged over 6 years in foster care and kinship care.
 Children are living in the towns of Wonga, Korumburra, Leongatha, Mirboo North, Yanakie, Koonwarra, Fish Creek, Toora, Meeniyan, Poowong, Mount Eccles, Nyora

Rates of substantiated child abuse

Rates of substantiated child abuse of children aged 0 – 17 per 1,000 of the population is 8.6 compared with 6.7 in Victoria (2010 – 2011)

Food insecurity

Agencies offering emergency food experience increased numbers of new people accessing their service and more people returning multiple times to source emergency food. These services include Milpara Community House, Manna Gum Community House, Salvation Army Leongatha Community Cafe and other local churches.

People who ran out of food and could not afford to buy more 2011

	South Gippsland	Victoria
Food insecurity – people who ran out of food in previous 12 months and could not afford to buy more	6.1%	4.6%

Mental Illness

20.5% of adults in South Gippsland report very high levels of psychological distress (Vic 12.6%)
 21.9% of young people report high. Very high psychological distress (Vic 15.5%)
 3.8% children with parents at risk of mental health difficulties (Vic 3.1%)
 11.5% history of mental health in families of school children (Vic 7%)

Mental Illness

	South Gippsland	Victoria	
High – Very High levels of psychologic distress in adults	20.5%	12.6%	12 National Health Survey
Young people reporting high/very high psychological distress	21.9%	15.5%	23 Victorian Child Adolescent Monitoring System 2014
Children 0 – 12 with parents at risk of mental health difficulties	3.8%	3.1%	16 School Entry Health Questionnaire
History of mental illness in family	11.5%	7.0%	16 School Entry Health Questionnaire

Alcohol

South Gippsland residents have greater risks due to alcohol consumption than Victoria

32.9% as risk of short term harm each month (Vic 29.4%)

13.6% high risk of short term harm each month (Vic 9.2%)

62.9% hospital admissions due to alcohol (Vic 55%)

3.9% alcohol death rate (Vic 1.5%)

8.2% alcohol death rate aged 65+ (Vic less than 4.9%)

67.7% children exposed to alcohol in utero (Vic 46.7%)

Alcohol harm

	South Gippsland	Victoria	
At risk of short-term harm each month	32.9%	29.4%	27 Vic Pop Health Inequities of health
Very high risk of short-term harm each month	13.6%	9.2%	
Hospital admissions due to alcohol (per 10,000 population)	62.3%	55.0%	18 Turning Point 2014 -2015
Alcohol related death rate (per 10,000 population)	3.9%	1.5	
Alcohol death rate 65 years+ (per 10,000 population)	8.2%	<4.9%	
Children exposed to alcohol in utero 2013	67.7%	46.7%	23 Victorian Child Adolescent Monitoring System 2014

References

Australian Bureau of Statistics (ABS) Census 2016 <http://www.abs.gov.au/census>

Australian Bureau of Statistics (ABS) [ABS SEIFA 2016 by State Suburb Code](#)

Community Indicators Victoria 2011

http://www.communityindicators.net.au/wellbeing_reports/south_gippsland

Crime Statistics Agency 2018 <https://www.crimestatistics.vic.gov.au/crime-statistics/latest-crime-data>

Department of Health and Human Services <https://www2.health.vic.gov.au/about/reporting-planning-data/gis-and-planning-products/geographical-profiles>

Dropping Off the Edge 2015 <https://dote.org.au/findings>

DSS payment demographic data accessed 9 April 2020 <https://data.gov.au/dataset/ds-dga-cff2ae8a-55e4-47db-a66d-e177fe0ac6a0/details>

Id Consulting for South Gippsland Shire Council:

Community Profile <http://profile.id.com.au/south-gippsland>

Forecast id <http://forecast.id.com.au/south-gippsland>

Atlas id <http://atlas.id.com.au/south-gippsland>

School Entry Health Questionnaire 2017

<http://www.education.vic.gov.au/about/research/Pages/reportdatahealth.aspx>

South Gippsland Community Health and Wellbeing Profile November 2018

https://www.southgippsland.vic.gov.au/downloads/file/408/community_health_and_wellbeing_profile_final_2012pdf

Statistical Data for Victorian Communities

<https://greaterdandenong.com/document/18464/statistical-data-for-victorian-communities>

Telstra mobile phone coverage <https://www.telstra.com.au/coverage-networks/our-coverage>

Turning Point <http://aodstats.org.au/VicLGA>

Victorian Child and Adolescent Monitoring System VCAMS 2014

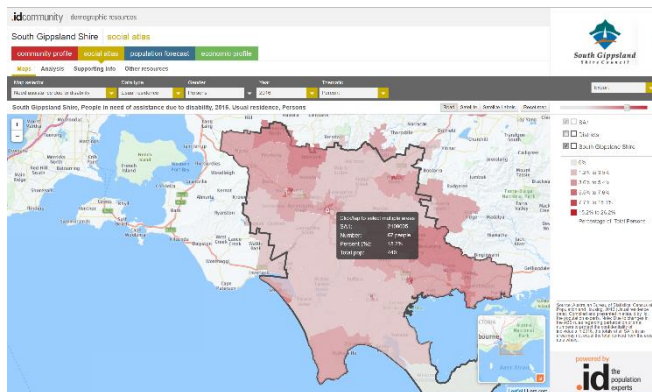
<http://www.education.vic.gov.au/about/research/Pages/vcamstableau.aspx>

Victorian Population Health Survey 2014 – Inequalities in health

<https://www2.health.vic.gov.au/public-health/population-health-systems/health-status-of-victorians/survey-data-and-reports/victorian-population-health-survey/victorian-population-health-survey-2014>

Appendix 1 – How to navigate id Social Atlas

The map is interactive and the user can scroll in on larger towns of Leongatha, Korumburra, Mirboo North, Foster and Fish Creek to see detail.



Hover your mouse over an area to see the number of people needing assistance, the percentage of the population and the number of the total population in the area.

Hover mouse over the scale on the right of the screen to highlight where the higher percentages of people needing assistance live.

