

## Council endorses land sales

After extensive community consultation resulting in a request for a further land evaluation exercise, Council has identified an initial 23 vacant land parcels as potentially surplus to Council's needs, and are preparing them for sale this financial year.

Consultation on this project commenced in 2013 and included community input into the evaluation matrix developed to assess Council land.

South Gippsland Shire Mayor, Cr Robert Newton, spoke about the land sales in relation to the service pressures that Council faced.

"The aims of Council's Strategic Land Review Project include planning for the sale and development of Council's properties and contributing to finance new and improved services for our community," he explained.

"There are many reasons to review Council's property portfolio – the last one was in 1996. First and foremost it is good business management. Secondly, the amalgamations resulted in Council owning many parcels of land that are not serving a community purpose. Thirdly, with changing demographics and ageing facilities, we are receiving more requests than ever for new projects, or improved facilities and services.

Proceeds from land sales play an integral role in addressing these requests."

Three Council properties were recently advertised for sale: Attenborough Court, Poowong; Main Street, Buffalo; and Gilfedder Terrace, Mirboo North. These are shown in the attached photos and are prime examples of properties that are either no longer serving or have never served a purpose for the community.

Any enquiries about Council's land sales program can be directed to Chris Van Der Ark, Manager Sustainable Communities on 5662 9200.



1. 6 Attenborough Court, Poowong

Prop ID:  
183083

Zoned:  
Residential 1

Area:  
1148.8m<sup>2</sup>

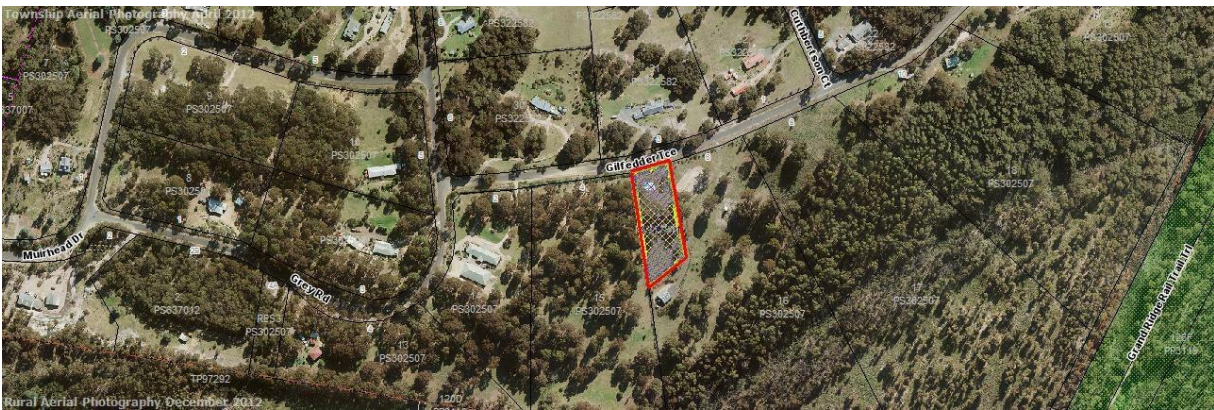


2. 6A Gilfedder Terrace, Mirboo North

Prop ID:  
193483

Zoned:  
Rural Living

Area:  
5078.8m<sup>2</sup>



3. 18 Main Street, Buffalo

Prop ID:  
188896

Zoned:  
Township

Area:  
1530.8m<sup>2</sup>



**PR 1745 5/11/15**

For media enquiries, please contact the Communications team on 5662 9200  
South Gippsland Shire Council, 9 Smith St. (Private Bag 4), Leongatha 3953  
[communications@southgippsland.vic.gov.au](mailto:communications@southgippsland.vic.gov.au)  
[www.southgippsland.vic.gov.au](http://www.southgippsland.vic.gov.au)