

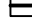




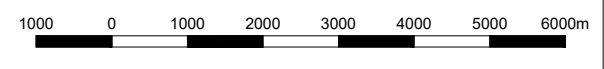
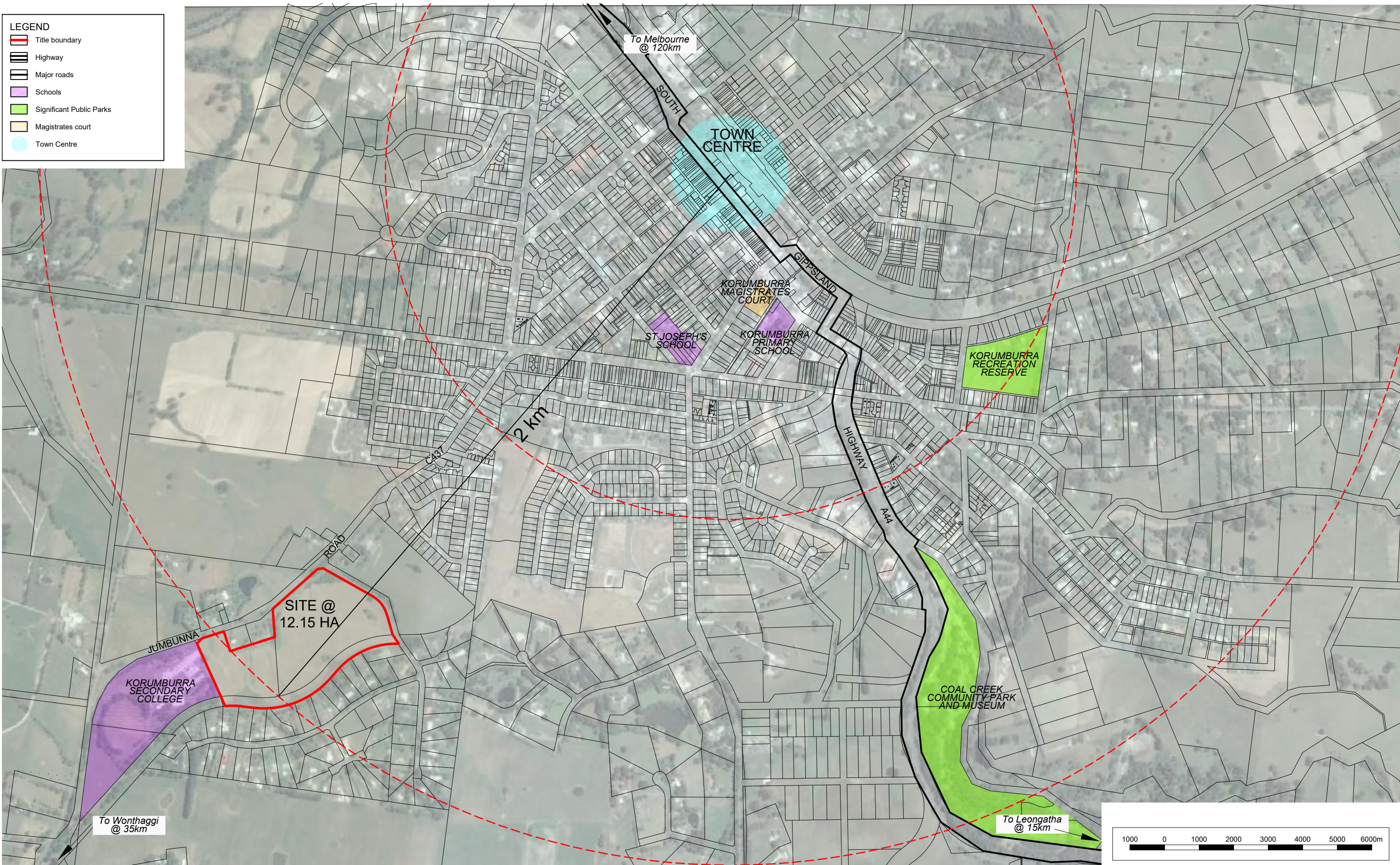


**LEGEND**

-  Title boundary
-  Highway
-  Major roads
-  Schools
-  Significant Public Parks
-  Magistrates court
-  Town Centre




**Site Context**  
 Jumbunna Road, Korumburra  
 Kufner Textiles (Australia) P/L

**BW** Beveridge Williams  
 development & environment consultants  
 Melbourne ph : 03 9524 8888  
 www.beveridgewilliams.com.au

Version	Date	Description	Drafted	Approved	Version	Date	Description	Drafted	Approved
01	19.08.2016	Initial Issue			J.CAHILL	A. BOULLY			

Date: 19.08.2016  
 Version No: 01  
 Job No: L7074  
 Scale (A1): 1:5000  
 (A3): 1:10,000



K:\JOBS DATA\L7074 JUMBUNNA RD KORUMBURRA\_LAN\00\CAD\L7074 EXISTING SITE CONDITIONS V01.DWG