

SOUTH GIPPSLAND SHIRE COUNCIL

# COVID-19 Community Grants Program



Application guidelines and information



*South Gippsland  
Shire Council*



South Gippsland  
Shire Council

## Summary

**Council is committed to helping our region recover from COVID19 by working alongside communities and by supporting and building the capacity of individuals, communities, businesses and organisations.**

COVID19 Community Grants will provide funding to support the delivery of community and creative projects that will support the community to respond to and recover from the impacts of COVID-19.

Funding of up to \$1,000 (ex GST) per applicant/group is available.

### **The grants aims to fund projects that:**

- promote community connection and social inclusion
- increase creative, cultural, recreational and health and wellbeing opportunities
- help our community organisations to keep operating and respond and recover from emergencies and disasters
- will assist our community to bounce-back post-COVID19

**All eligible applications will be assessed.**

**Applications should utilise local goods and services where possible.**

## Funding Allocation

South Gippsland Shire Council has allocated \$100,000 to the COVID19 Community Grant Program. Applicants may apply for up to \$1,000 (ex GST). Funding will be available until the allocation is exhausted.

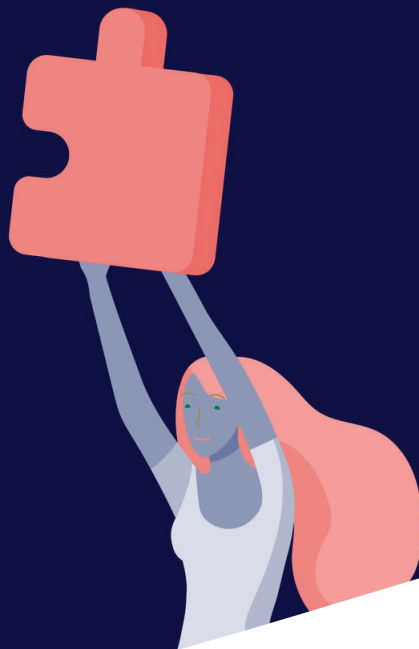
## Eligibility

### **Who can apply?**

- Not for profit community groups whose project demonstrate a real benefit to the community.

### **Who can't apply?**

- Australian or Local Government agencies or bodies
- Victorian Government agencies *with the exception of kindergartens*
- Government business enterprises
- Political parties
- Applicants who have not fulfilled the conditions of a previous Council grant
- Groups that do not operate or provide services in the South Gippsland local government area



## Assessment

Your application will be reviewed by a panel of Council staff and will be evaluated according to:

- How the project aligns with one or more of the COVID-19 Recovery aims listed on the previous page (30%),
- How the project builds capacity, strength, creativity and resilience in our community in a COVID-19 context (30%),
- How the project aligns with the South Gippsland Council Plan (20%)
- How the project demonstrates that it is well planned, that suitably skilled people are involved, and that the applicant and the project are financially viable (20%).

## Dates

Applications open on 1 August and close when the allocation is exhausted. Applications will be assessed as they are received, and applicants will be advised of an outcome as soon as practicable (usually within two weeks). Applicants are expected to use their funds as soon as possible.

## Apply

**[www.southgippsland.vic.gov.au/  
covidcommunitygrants](http://www.southgippsland.vic.gov.au/covidcommunitygrants)**

**Questions? Please contact  
Council's Grants Team on 5662 9200**