



South Gippsland
Shire Council

South Gippsland Shire Council News

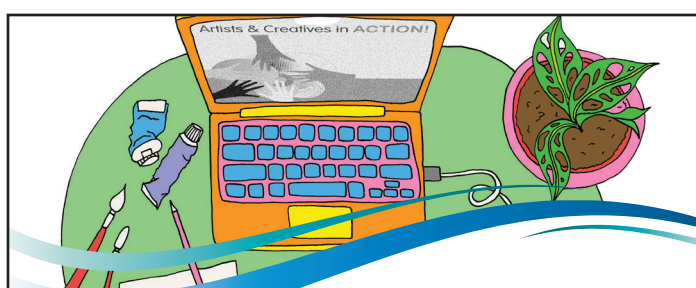
Merry Christmas to everyone

The end of the year is almost upon us and after a tumultuous year, we are all looking forward to some time with our loved ones.

With easing restrictions, we are able to go out and about more often and support our local businesses. We encourage you all to take note of the check-in processes at the business. Look out for QR codes and physical sign-in options to fill out.

Some of Council's services will be closed or have different hours over the Christmas / New Year period, so we encourage you all to read the section on the Christmas Closure below. That will give you a run down of the services that may be affected.

From all of us here at South Gippsland Shire Council, we wish you a very Merry Christmas and a happy and safe New Year.



Are you a South Gippsland creative?

Council is pleased to partner with ArtsACTION - an upskilling and professional development program for creatives.

Participants will receive a six-part email resource pack, access to Zoom workshops and a growing creative network. The best part? It's FREE!

The program will be delivered from now until 30 June 2021.

If you are interested in participating in the ArtsACTION program, you can get more information here:

popupart.com.au/artsaction

Due to the Christmas break, there will be no Council meetings in January 2021.

Meeting dates for 2021 will be listed on Council's website.

The first meeting is scheduled for 24 February 2021.

CHRISTMAS CLOSURE

Council offices will be closed from 5.00pm 24 December until 8.30am on 4 January for the Christmas period. Emergencies: Phone 5662 9200 (24/7) for urgent Council matters such as livestock or trees on roads. General emergencies: 000

Tourism: Visitor Information Centres in Foster. From 26 December 7 days a week, 10.00am - 4.00pm (www.visitpromcountry.com.au)
Coal Creek: 7 days a week, 10.00am - 4.30pm.
Leongatha Information Centre,
Memorial Hall: 7 days a week, variable

hours. Phone 5662 2111.

Maternal and Child Health: Centres are open (except for public holidays) but limited to Key Ages and Stages (KAS) checks. Appointments required. For support, call 13 22 29. If you or your child is unwell, seek advice from your GP or nearest hospital emergency unit. Council and community playgroups do not run during school holidays. Go to www.playgroup.org.au to find contact details for your local playgroup.

Waste Management: There will be no kerbside garbage, recycling and green waste collections conducted on Christmas Day. Properties scheduled to have their kerbside waste bins collected on Friday 25 December will be collected on Saturday 26 December. This affects properties in Korumburra and Kongwak. Transfer stations and the Koonwarra Landfill will be closed on Christmas Day. Opening hours displayed at sites on www.southgippsland.vic.gov.au

WRITERS RESIDENCY PROGRAM

Council is partnering with West Gippsland Regional Libraries Corporation to provide a one-month residency program to be hosted at South Gippsland libraries during February.

Five residencies are available at each of the following locations: Korumburra, Leongatha, Mirboo North and Foster. For more information and to register your expression of interest visit:

www.southgippsland.vic.gov.au/writersinlibraries

CONTACT US

9 Smith Street, Leongatha
03 5662 9200

council@southgippsland.vic.gov.au

www.southgippsland.vic.gov.au

www.facebook.com/southgippslandshirecouncil

[southgippslandshirecouncil](https://www.facebook.com/southgippslandshirecouncil)