

Community Wellbeing

Municipal Health and Wellbeing Plan
Report Highlights 2017 - 2021



*South Gippsland
Shire Council*



Health Promotion

Partners

Council: Access and Inclusion, Community Strengthening, Children and Family Services (Immunisation), Environmental Health, Major Projects, Emergency Management and Regional Assessment Service.

Other Partners: Community, Gippsland Primary Health Network, Gippsland Women's Health, Headspace, South Gippsland Water, South Coast Primary and Community Partnership, GippSport, Gippsland Southern Health Service and Gippsland Sexual and Reproductive Health Alliance.

Policies and Programs to Protect the Health of the Community

Headspace

- Commenced in January 2019.
- Improved access to mental health services for young people in the region.
- Delivery of services at the main centre in Wonthaggi with outreach services across Bass Coast and South Gippsland.
- During 2020 and 2021, 493 young people accessed one-on-one support. 450 accessed community engagement activities.

Immunised Community – 2021/22

Early Years Immunisation

- 12 to 15 months old: Average 95.59 per cent.
- 24 to 27 months old: Average 93.38 per cent.
- 60 to 63 months old: Average 96.65 per cent.

Immunisation Highlights

- Introduction of new vaccine for high school students (Meningococcal).
- Introduction of Government-funded program for free whooping cough vaccine for new parents.
- Public immunisations began at new venue in Korumburra (Karmai Community Children's Centre).
- Assumed responsibility for printing of patent consent cards to be more gender inclusive.
- Worked with Kindergartens and Playgroups to provide immunisations and histories for children who would otherwise be ineligible to attend immunisation sessions.

For further details see infographic [Immunisation Highlights 2017 – 2021](#).

Minimise Harm from Alcohol, Gambling, Smoking and Other Drugs

SGSC Liquor and Gambling Strategy Action Plan

- Protocols in place that ensure a range of Council teams review all liquor planning applications.
- South Gippsland Liquor Accord re-established.
- Two funded gambling projects created to support gambling harm reduction that allowed for:
 - Reduction in stigma associated with discussing gambling harm through looking at positive solutions.
 - Increased awareness of gambling harm risk for shift workers and farmers.
 - Increased resources to guide local community towards gambling-free activities.
 - Increased opportunities for connectedness of people previously restricted due to work.
 - Increased cross-project partnerships to support shared delivery of programs.
 - Increased awareness across other service providers on project and preventing gambling harm.

Community & Business – Strategies & Resources

To be self-reliant if faced with natural disasters and emergencies

SGSC Emergency Management

- Established a Municipal Emergency Management Planning Committee (MEMPC) in South Gippsland in response to changes in the *Emergency Management Act 2013*.
 - Each MEMPC is a multi-agency collaboration group whose members bring organisation, industry or personal expertise to the task of emergency management planning for the municipal district.

Positive, Respectful Relationships and Safe Sexual Reproductive Practices

Gippsland Women's Health

- Increase in the number of providers that are listed on 1800 My Options offering a number of sexual and reproductive healthcare services.
- Services available in South Gippsland include:
 - STI screening.
 - Cervical screening.
 - LGBTIQ+ sensitive clinics.
 - Emergency and hormonal contraceptives.
 - Long-acting reversible contraceptives.
 - Pregnancy options including medical and surgical termination of pregnancy.
- Launched Stage Two of the Condom Machine Project.

Equity of Access to Services and Infrastructure

SGSC Regional Assessment Service

- Clients have been able to extend time in their own home before entering the care system.
- Clients have been linked with funded services that have provided social connection and safety in their home.
- Council successfully worked alongside and developed strong relationships with local agencies to develop joint goals and implement strategies to maintain independence.



Built and Natural Environment

Partners

Council: Assets, Biodiversity, Building, Economic Development and Tourism, Grants, Emergency Management, Environmental Health, Recreation, Sustainability and Strategic Planning.

Other Partners: South Gippsland Water, West Gippsland Water Catchment Management Authority, South Gippsland SPLASH, YMCA and Parks Victoria.

Protect and Improve the Natural Environment

West Gippsland Catchment Management Authority 2017 - 2021

- Fox and rabbit control program in lower Tarwin and Cape Liptrap areas.
- Worked with over 20 private landholders covering an area of 16,000 hectares.
- Corner Inlet:
 - Water quality protection works with private landholders in the Agnes and Franklin catchments.
 - Fox control on Barriers Islands (PV).
 - Spartina management.
 - Saltmarsh protection.
 - Nutrient management programs for dairy farmers.
- Anderson Inlet:
 - Water quality protection works with private landholders on the Tarwin West Branch.
 - Backfish relocation and protection works.
 - Spartina control program.

South Gippsland Water

- Offer two permanent water fountains to Councils each year to promote #choosetap.

Safe and Accessible Infrastructure

Council – Great Southern Rail Trail

- 2020/21 work progressed on construction of the Leongatha to Nyora section.
- Trail construction well advanced with a target completion date of late 2021.
- State Government funding secured totalled \$1.3 million.
- Total length once completed: 70 kilometres running from Nyora to Welshpool.
- Funding for Welshpool to Alberton section has been secured and will be delivered in partnership with Wellington Shire Council.

Aquatic Centres

- 74,862 visits during 2020 and 2021.

Council Advocacy on Transport Infrastructure

- \$5.4 million for Bair Street, Leongatha redevelopment.
- \$115 million for South Gippsland Highway realignment at Koonwarra.
- Planning and advocacy for Korumburra Streetscape.
- South Gippsland Highway realignment at Coal Creek bends, Korumburra.
- Leongatha Heavy Vehicle Alternate Route Stage Two.
- Integrated Transport overview being prepared in consultation with Department of Transport.



Community Wellbeing

Partners

Council: Access and Inclusion, Coal Creek, Community Services, Community Strengthening, Economic Development and Tourism, Planning, Regional Assessment Service and Social Planning.

Other Partners: Gippsland Southern Health Service, Department of Education and Training, Department of Health and Human Services, South Coast Prevention Team, South Coast Partnership to Prevent Family Violence, South Gippsland Hospital, Gippsland Southern Health Service, New Wave Advocacy, Wonder Woman Support Group, Bass Coast Health, Gamblers Help, GippSport, Gippsland Womens Health, South Gippsland Bass Coast LLEN, South Coast Primary and Community Partnership, South Gippsland SPLASH, Tarwin Community Health Centre, FreeZa and West Gippsland Regional Library Corporation (now known as MyLi – My Community Library).

Community Members Feel Valued and Connected

South Gippsland Shire Council

- Community 55+ website and e-newsletter provided for the South Gippsland community. The e-newsletter has 200 subscribers.
- Joined the WHO Global Network for Age-friendly Cities and Communities.

West Gippsland Libraries

- 288 programs were run with 3,512 attendees.

Young People Supported to Develop Independence

SPLASH / YMCA

- Established the WHYNot platform in 2018 as an authentic space for young people to have their voices heard by publishing their opinions, questions, ideas and stories.

South Gippsland Shire Council

- L2P Program continued throughout 2019 and 2020.

Volunteers and Community Networks Supported

South Gippsland Shire Council

- Grants program was established and provided funding to community groups to assist with some financial distress and support tech-based responses.
- Local Men's Shed's were supported to embrace online meeting and face-to-face where possible.
- Community Assistance booklets created in partnership with Bass Coast Shire Council and the Public Health Network and distributed across Southern Gippsland.
- Community Leadership Program established in 2020.

Volunteers and Community Networks Supported

South Gippsland Shire Council

- Grants program was established and provided funding to community groups to assist with some financial distress and support tech-based responses.
- Local Men's Shed's were supported to embrace online meeting and face-to-face where possible.
- Community Assistance booklets created in partnership with Bass Coast Shire Council and the Public Health Network and distributed across Southern Gippsland.
- Community Leadership Program established in 2020.

Young People Connected to Education and Employment

South Gippsland and Bass Coast Local Learning Employment Network

- I Am Ready – a program to support secondary school students with a learning barrier or disability.
 - 30 students participated across 2020 and 2021.
- Remained committed to serving the business and school community through the pandemic. Where possible, moved to online activities and developed new resources with their partners.
- Structure Workplace Learning (SWL) on-the-job training was available for students undertaking a VET program as part of VCAL or VCE studies.
- School Industry Roundtable held in Inverloch in April 2021.
 - 90 participants came along.

Improved Respectful Relationships in School

Respectful Relationships

- All Government schools in South Gippsland and Bass Coast joined the initiative voluntarily from 2017 to 2020. This was not the case across all Local Government Areas in Victoria and demonstrates the commitment our local schools have to primary prevention by delivering an education program through a whole-school approach.

A Coordinated Approach to Family Violence

- Alignment of sub-regional prevention of family violence efforts has created a shift in the story of family violence across the South Coast. This has been achieved through a coordinated partnership approach to projects, including:
 - The Partnership to Prevent Family Violence in South Gippsland and Bass Coast (previously known as South Coast Partnership to Prevent Men's Violence Against Women).
 - Delivery of *Change our Story – The South Coast says No to Family Violence*.
- Utilised a collective impact approach delivered with \$140,000 Community Partnerships for Primary Prevention grant.
- Set the foundation to create a sub-regional shift in addressing the drivers of family violence including 16 Days of Activism campaigns and messaging across multiple key settings.

Diversity in our Community is Recognised and Respected

It's No Drama

- October 2017 – Developed and delivered a theatre show.
- March 2019 – Received a Regional Arts Victoria Cultural and Skills Development Grant and a South Gippsland Shire Council Community Grant, enabling them to build and diversify their skills while developing and showing 'Real. Not Real'.
- January 2020 – Received a Creative Victoria two-year Arts Grant worth \$120,000, which funded the employment of three part-time staff members by South Gippsland Shire Council, the development of new creative work and allowed for the building of an independent business plan.
- August 2020 – Post-COVID, they abandoned plans to develop another theatre show and instead employed a local filmmaker, sound designer and costume designer to help create a COVID-safe, collaborative film project called 'Party of One'.
- March 2021 – 'Party of One' featured on ABC Gippsland.
- June 2021 – Collaborated with a local photographer and macramé artist to develop an exhibition of photographs shown at Meeniyan Art Gallery.

South Coast Inclusion Network

- Has developed into a recognised and respected group representing the LGBTIQ+ community in South Gippsland and Bass Coast.
- A range of resources and events have been held since 2017 that has allowed for increased promotion of the LGBTIQ+ community in local newspapers and organisational training.
 - Increase in organisations using video and participated in events and training provided.
 - Incorporation of the Network has allowed opportunities for grant applications for further training to take place.

New Wave Gippsland and Gippsland Disability Advocacy Inc.

- Established in South Gippsland and employs people living with disability to educate and build capacity in the sector.
- You can find out more about them by viewing the video here:
youtu.be/fXUAuKMA1b0

Gippsland Centre Against Sexual Assault

- Sexual Lives and Respectful Relationships program – www.slrr.com.au
- Project funding received to develop, deliver, grow and embed the Sexual Lives and Respectful Relationships program across Gippsland.
- Creation and strengthening of partnerships with:
 - New Wave Gippsland;
 - Gippsland Disability Advocacy Inc.;
 - Federation University;
 - University of Waikato (New Zealand);
 - And others.

GippSport

- Delivered a range of physical activity programs to engage people with disabilities.
- Highlight for the 2017 to 2021 plan period was the All Abilities Bowlopolis program held at Phillip Island Tenpin Bowling Centre.

Violence Prevention Supported in a Range of Settings

Partnership to Prevent Family Violence in South Gippsland and Bass Coast

- Delivered a consistent sub-regional approach to the prevention of family violence including:
 - 16 Days of Activism Against Gender-based Violence social media campaign.
 - Healthier Masculinities training, partnering with Gippsland Women's Health, to deliver Common Cause training and research on gender equity messaging to partners.
 - Prevention support to 'Change for Sam'.
 - Alignment with the Free From Violence Coalition.
 - A partnership review was undertaken in March 2021. As a result, the group name, vision, strategic plan and terms of reference were updated.

South Gippsland Shire Council

- Availability of Council Venues
 - Allowing Council venues to be freely available to support prevention activities has allowed a range of users to make training, workshops and community events available with limited funding.
 - This has allowed greater promotion of gender equity and mental health and wellbeing events in the centre of Leongatha and in Korumburra.
- Member of the South Coast Partnership to Prevent Family Violence since its inception.
 - Provided increased capacity to develop resources and provide a combined message across South Gippsland and Bass Coast.
 - Combined staffing capacity and combined funding has allowed specialist trainers to come to the area and to gain greater participation from a broader range of organisations.



Lifestyle

Partners

Council: Access and Inclusion, Building and Assets, Coal Creek, Community Services, Economic Development and Tourism, Planning, Regional Assessment Service, Sustainability, Social Planning and Strategic Planning.

Other Partners: Department of Health and Human Services, Gamblers Help, GippSport, Gippsland Primary Health Network, Grow Lightly, South Coast Primary and Community Partnership, South Coast Prevention Team, South Gippsland Water, South Gippsland SPLASH, Tarwin Community Health Centre, Latrobe Community Health and South Coast Water Partnership.

Increased Opportunity for Active and Passive Recreation

GippSport

- #GippyGirlsCan commenced in early 2018 as a social media movement encouraging the women of Gippsland to get active together through community- and sporting club-led physical activity programs.
 - Started as a localised amplification of 'This Girl Can', which was implemented by VicHealth in 2017.
 - Events took place in Leongatha and Foster with 23 and 25 women engaging respectively.
 - Partnership with South Gippsland Shire Council was created through the 'This Girl Can' marketing grant and led to many programs in the Shire including:
 - » Stand-up paddle boarding at SPLASH;
 - » SkateFit;
 - » Soccer Mums; and
 - » Exercise programs in Foster.

South Gippsland SPLASH (YMCA)

- 2020/21 – Licence to Move campaign offered free access to South Gippsland SPLASH for 14 days.
- 2019 to 2020 – Over 500 group fitness classes were delivered across South Gippsland SPLASH, Loch Hall, Nyora and Korumburra.

Safe Walking and Riding – More Active Women and Girls

Walk to School

- Funding over the four years allowed for habits to be formed in all primary schools around South Gippsland promoting walking and riding to school.
- Many schools used community areas to prioritise group activities during Term 4 each year. These included local tracks and rail trails.
- Some infrastructure works including the connection between the Great Southern Rail Trail and Welshpool Primary School and new bike and scooter storage at two schools in Korumburra supported active transport to school.

Increased Access to Healthy and Affordable Food and Water

South Coast Water Partnership

- Delivery of collaborative social media campaigns led to consistent messaging across key settings supporting the consumption of tap water.
- Social marketing campaign 'Tap Water Every Day'.
 - Co-designed to develop branding, messaging and strategies that address identified barriers and enablers to the target audience to increase tap water consumption and reduce sugar sweetened beverage intake.
 - The result – an increase in tap water consumption by one serve per day by the target cohort (teenage males).
- Partnership review led to improved processes for South Coast Water Partnership including a new TOR, Joint Statement of Commitment and Choose Tap Supporter Agreement – Year Four.
- Five secondary schools involved in the implementation of school-based interventions through the 'Tap Water Every Day' co-design process.

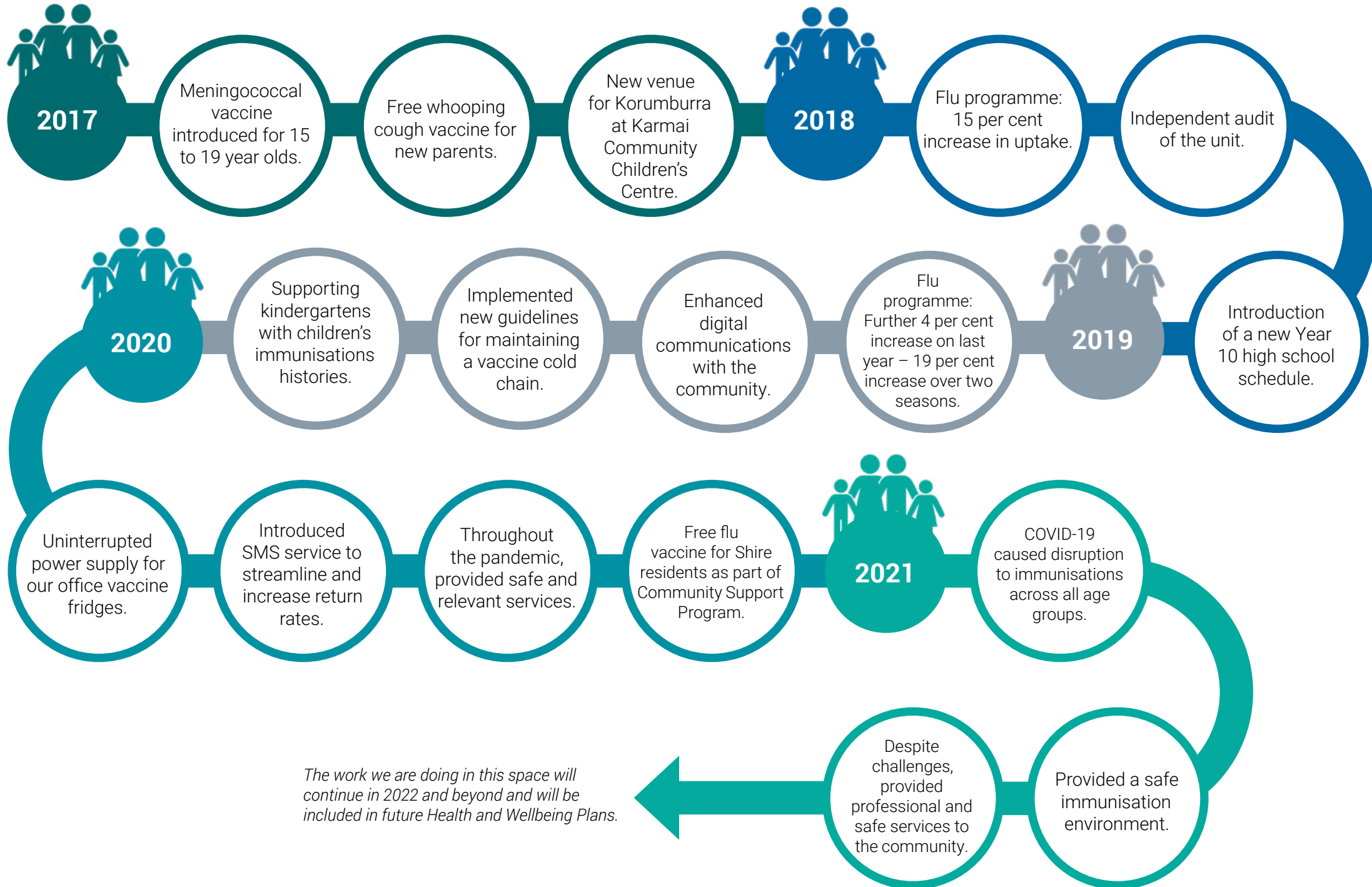
South Gippsland Water

- One of 20 utilities nation-wide to sign on as partners to the Choose Tap Coalition.
- Supported the loan of portable water bottle refill stations, drinking fountains, or water trailers to more than 50 community events as part of the Choose Tap Coalition.

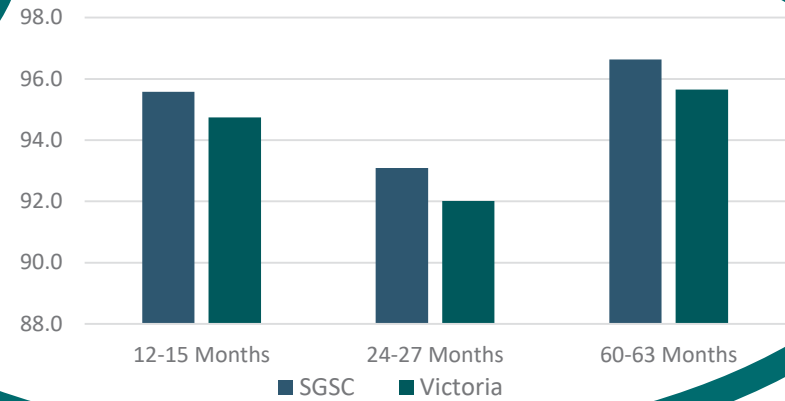
Healthy food options embed through local health services

- Two services with healthy eating policies.
- One achieving health eating benchmarks through an achievement program.

Immunisation Highlights 2017 – 2021



Immunisation Averages 2017 - 2021



Immunisation Averages – All Age Groups

