

Municipal Emergency Management Planning

South Gippsland MEMPC



South Gippsland Emergency Animal Welfare Arrangements

This arrangements document outlines the responsibilities of South Gippsland MEMPC government agencies for animal welfare in emergencies and reflects information contained in the Victorian Emergency Animal Welfare Plan [Victorian Emergency Animal Welfare Plan | Emergency animal welfare | Emergency management | Farm management | Agriculture Victoria](#).

The South Gippsland Emergency Animal Welfare Arrangements will be amended and maintained by DJPR, DELWP and Council and amendments will be recorded in the table below and where relevant presented to the MEMPC.

Version	Author	Update Details	MEMPC Approval Date
1.	Ag Vic, Parks Vic, SGSC	First Version	22/11/2022

Key Messages

- The primary responsibility and duty of care for animals always remain with the person in charge of the animal (the owner or carer).
- Have a rehearsed emergency plan for your animals which includes an evacuation kit, suitable transport and multiple evacuation routes where possible.

Responsibilities of Government Agencies

DJPR - Agriculture Victoria	DELWP	Local Government
Primary agency for welfare of livestock and companion animals All hazards, all species excluding wildlife Coordination of animal welfare agencies	Primary agency for wildlife welfare Coordination of wildlife agencies & volunteers Wildlife welfare assessment	Care of animals at relief centres (where capacity exists) Stray, wandering and lost animals Disposal/Burial of carcasses

Department of Jobs, Precincts and Regions (DJPR) – Ag Vic

Prevention / Mitigation / Risk Reduction:

- Provide advice to agencies, organisations and the community regarding animal welfare management in emergencies and risk management planning
- Communicate Animal Emergency welfare arrangements and operational requirements to relevant stakeholders
- Develop, maintain and communicate protocols that describe restrictions and standards to be used by all personnel, including animal welfare volunteers deployed by DJPR

Response:

- Liaise with DELWP, local government and relevant animal welfare support agencies to enable effective and timely delivery of animal welfare services during an emergency

- Provide advice to control and support agencies regarding the impact, or potential impact of an emergency on animal welfare, including biosecurity (disease) risks and management strategies

Relief / Recovery:

- Provide assistance with urgent animal welfare needs, including emergency shelter, veterinary needs etc. for companion animals and livestock
- Provide advice on options for treatment, humane destruction or emergency salvage slaughter and refer to triage points (when established and where relevant)
- Where necessary, assist with the humane destruction of injured or affected animals
- Advise Local Government of disposal options for deceased / euthanized animals
- Assess and report losses and damage to agricultural assets and animals and the needs of affected persons / communities to DFFH / Local Government

Department of Environment, Land, Water and Planning (DELWP)

Prevention / Mitigation / Risk Reduction:

- Provide advice to agencies, organisations and the community regarding wildlife welfare management in emergencies and risk management planning
- Communicate emergency wildlife welfare arrangement to relevant stakeholders
- Develop and maintain protocols that describe restrictions and standards to be used by wildlife volunteers

Response:

- Liaise with DJPR, local government and relevant animal welfare agencies to enable effective and timely delivery of animal welfare support services during an emergency
- Provide advice to control / support agencies regarding the impact or potential impact of an emergency on wildlife
- Provide advice to response agencies regarding the impact of flora and fauna

Relief / Recovery:

- Provide advice on wildlife carcass disposal needs to local government, where required or appropriate
- Provide advice to land management agencies and the community on wildlife rehabilitation
- Oversee carcass management on the foreshore of crown lands managed directly by DELWP
- Lead a coordinated response for the rescue, treatment and rehabilitation of impacted wildlife
- Provide advice on the humane destruction of injured wildlife as required

South Gippsland Shire Council - staff involved in Animal Welfare activities

Prevention / Mitigation / Risk Reduction: Consider local arrangements and provide for relevant animal welfare services including consideration for the following:

- Options for the management of displaced animals, including provisions at Emergency Relief Centres
- Identify DJPR / DELWP contacts for animal assessment activities
- Consider carcass transport providers and disposal sites - Disposing of carcasses after bushfire, flood, drought or transport incident

Response:

- Liaise with relevant animal welfare agencies to enable effective and timely delivery of animal welfare services, via the MEMO and / or Councils Emergency Management Team (EMT)

Relief / Recovery:

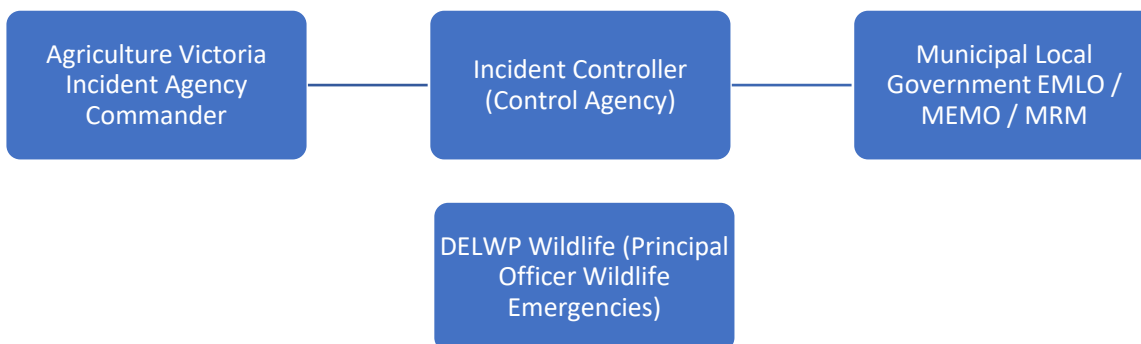
- Provide assistance with urgent animal welfare needs, including emergency shelter, veterinary needs etc. for companion animals and livestock
- Emergency confinement of displaced animals within the local government area
- Referral of animal welfare needs to responsible agencies
- Coordination of clean-up activities, including disposal of dead animals
- Provide a municipal point of contact for other agencies
- Make provisions for animals presenting at Emergency Relief Centres

Responsibilities of Key Partner Organisations

- Australian Veterinary Association (AVA) - Maintains and co-ordinates a volunteer database of veterinarians and veterinary nurses to support animal welfare emergencies.
- Royal Society for the Prevention of cruelty to Animals (RSPCA) - May assist DJPR and DELWP to undertake animal welfare assessment activities and provide animal welfare resources as required.
- Victorian Farmers Federation (VFF) - Liaises with DJPR to determine the scale and co-ordination of fodder distribution requirements.

Local Emergency Animal Welfare response structure

The structures below represent arrangements for a level 2 or 3 incident.



Relevant Contact details for agencies are held by the MEMO.