

SOUTH GIPPSLAND SHIRE COUNCIL

Central Registration Information Kit



Need kindergarten information in your language? The [Department of Education](#) has many translated resources to support families to access kindergarten and early years services.



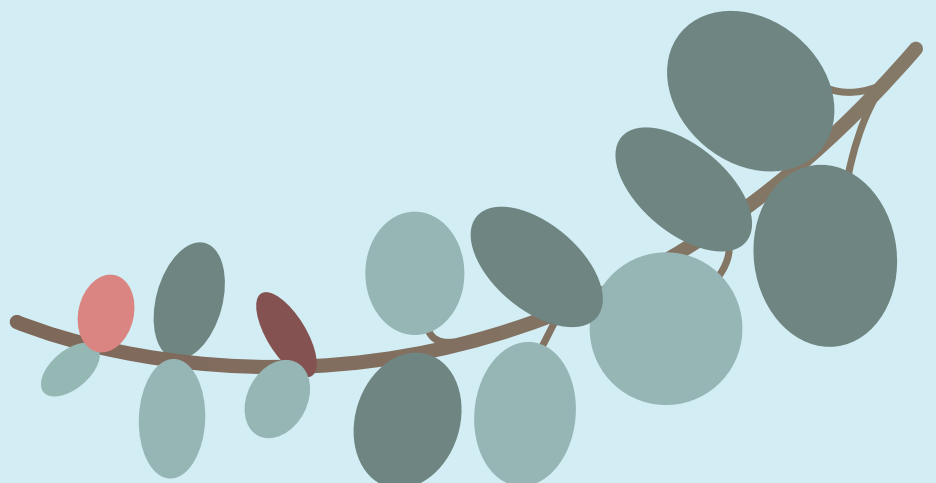
South Gippsland
Shire Council

Contents

What is Kindergarten?	3
Kindergartens in the South Gippsland Shire	4
What is Kindergarten?	6
When to Send Your Child to Kindergarten	7
Aboriginal and Torres Strait Islander Children	10
Kindergarten for Culturally and Linguistically Diverse Children	11
Children with Additional Needs	11
Cost of Kindergarten	12
Immunisation	13
Kindergarten Central Registration and Enrolment Scheme	14
Enrolling in Kindergarten	20
When Does My Child Start Kindergarten	20

Acknowledgment of Country

We acknowledge the Bunurong and Gunaikurnai people as the Traditional Custodians of South Gippsland and pay respect to their Elders, past, present, and future, for they hold the memories, traditions, culture, and hopes of Aboriginal and Torres Strait Islander people of Australia.



What is Kindergarten?

Kindergarten (also called preschool) is an important step for young children and is strongly recommended for all children. Kindergarten supports the development of children's health and wellbeing, helps them to develop confidence and social skills, and prepares them for school. Kindergarten programs are delivered by bachelor-qualified early childhood teachers and qualified educators.

You, as a parent or caregiver, are supported and encouraged to be a part of your child's education, helping to build on the learning that your child is already doing at home.

Two Years of Funded Kindergarten

All eligible children in the South Gippsland Shire now have access to two years of funded kindergarten prior to starting school.

The progressive roll-out of Victorian Government funded three-year-old kindergarten commenced in South Gippsland in 2020. Since the roll-out, children have been able to access between 7.5 and 15 hours of funded three-year-old kindergarten each week. Most kindergarten services in South Gippsland are now offering 15 hours of three-year-old kindergarten. All children eligible for four-year-old kindergarten will have access to 15 hours of kindergarten each week.

From 2027, four-year-old kindergarten will gradually transition to [Pre-Prep](#), with programs increasing to between 16 and 30 hours per week. For more information about Pre-Prep in South Gippsland Shire Council please go to our website.



Kindergartens in the South Gippsland Shire

Kindergartens are funded by the Victorian Government through the Department of Education.

Funded kindergarten is offered at all kindergartens and long day care centres in South Gippsland. South Gippsland Shire Council does not manage any kindergarten services. They are managed by either not-for-profit volunteer committees, not-for-profit early years managers or private enterprises.

Kindergartens Participating in South Gippsland Shire Council's Central Registration

South Gippsland Shire Council manages a central registration process for the participating kindergartens listed below.

All of these kindergartens offer three- and four-year-old kindergarten and are happy for you to enquire and tour the facility directly during your decision-making process. More information on their session times can also be found on [Council's website](#).

- Karmai Community Children's Centre Inc. (Korumburra).
- Leongatha Children's Centre Inc. which operates:
 - » Leongatha Children's Centre.
 - » Leongatha Early Learning Centre.
- Leongatha Community Preschools Inc. which operates:
 - » Allora Kindergarten.
 - » Hassett Street Kindergarten.
- Loch and District Preschool Inc.
- Meeniyan Preschool Inc.
- Mirboo North Kindergarten – Y Ballarat.
- Poowong Kindergarten – Uniting Care Gippsland.
- Prom Coast Centres for Children which operates:
 - » Fish Creek Kindergarten.
 - » Foster Early Learning.
 - » Toora Kindergarten.
 - » Welshpool Kindergarten.

Types of Kindergarten Programs

Sessional Kindergarten in a Stand-Alone Kindergarten

Sessional kindergarten usually refers to a kindergarten program that operates for specific days and hours each week. In most instances, the same children attend on the same days. For example, kindergarten may be Monday, Wednesday and Friday from 9.00am to 2.00pm each day.

The following kindergartens offer sessional kindergarten:

- Allora Kindergarten.
- Fish Creek Kindergarten.
- Hassett Street Kindergarten.
- Loch and District Preschool.
- Meeniyah Preschool.
- Poowong Kindergarten.
- Toora Kindergarten.
- Welshpool Kindergarten.

Sessional Kindergarten within a Long Day Care Service or Offering After Kindergarten Care

Sessional kindergarten within a long day care centre usually means the hours of kindergarten are the same each day. Before and after care can also be included for those who require it on one or more days at an additional cost and subject to availability. For example, children can attend just the kindergarten program i.e. 9.00am to 2.00pm each day and access a long day care session before or after.

Sessional kindergarten within a long day care setting may not have the same educators or children each day. The before and after kindergarten care may be an option, but you would need to discuss this with the kindergarten service directly.

The following kindergartens offer sessional kindergarten within a long day care setting or offer before and/or after kindergarten care:

- Foster Early Learning.
- Karmai Community Children's Centre.
- Leongatha Children's Centre.
- Leongatha Early Learning Centre.
- Mirboo North Kindergarten.

Integrated Kindergarten and Long Day Care

Integrated kindergarten usually refers to kindergarten within a long day care facility (e.g. they can provide care from 6.30am to 6.30pm). These centres usually charge by the day with a government childcare subsidy instead of term fees. For example, kindergarten hours may be 8.30am to 2.00pm with qualified teachers and educators, but the child can access the wrap-around care before and after the program. You will be able to claim your childcare subsidy when this occurs.

Rotational Program Model

A rotational model can help meet increased local demand when registrations for an age group exceed the number of approved places for the kindergarten. A rotational session structure may be achieved by allocating children into smaller groups which are combined on a particular day to form a larger group – meaning your child's small group could attend their third session with a different group of children to the first two days.

What is Kindergarten?

Every family is different. This means the kindergarten program you choose should be a good fit with your child and family. Once you have a shortlist of kindergarten programs, check when they are holding [open days or information sessions](#), or make an appointment to visit. This is a great way to get a 'feel' for each program, to ask questions and to share information about your child. You can also find out about the days and times the kindergarten program runs and any fees charged and subsidies available. Visit more than one kindergarten if you can and try not to rely only on what other families say.

How Do I Choose the Right Kindergarten?

The kindergarten that is closest to your residence is usually the best option. This ensures that the child builds a good community connection and will likely know children when transitioning into Primary School. However, regardless of proximity, kindergarten is a personal choice based on what each kindergarten offers within their program room and outside in the play area. It is recommended that you visit kindergartens of interest to compare and assist you in deciding which would be more suitable for your child.

Checking a kindergarten's [National Quality Standard ratings](#) can also help you decide on the right kindergarten.

Suggested Questions to Ask a Potential Kindergarten

- How will the educators work with you to support your child's learning?
- What opportunities will there be to discuss your child's progress?
- How does the program encourage positive behaviour?
- How will the educators include your child's interests?
- If your child has additional needs, how will the service support you and your child?

When to Send Your Child to Kindergarten

Research shows that engaging children in high quality learning experiences can improve their learning and development outcomes, emotional wellbeing as well as provide longer-term educational and social outcomes.

To get the full benefit of a kindergarten program, children need to be emotionally and socially ready for the experience.

All children are eligible to attend two years of funded kindergarten in the two years before starting school. Some children will be eligible for a third year of funded kindergarten prior to starting school. To be eligible, the child must be assessed as having developmental delays in key outcome areas of learning and development. See the [Victorian Government's website](#) for more information.

For children born between 1 January and 30 April, it is recommended to consider what age you would like your child to start Primary School and work backwards.

The table below shows when a child is eligible to access three- and four-year-old kindergarten. You can also use the online '[When to Start Three-Year-Old Kindergarten](#)' calculator.

Child Born Between	Eligible for Three-Year-Old Kindergarten	Eligible for Four-Year-Old Kindergarten	Start Primary School
1 May 2021 and 30 April 2022	2025	2026	2027
1 May 2022 and 30 April 2023	2026	2027	2028
1 May 2023 and 30 April 2024	2027	2028	2029

Children will not be able to attend a funded kindergarten program until they turn three years of age. This is due to national regulations around ratio requirements and licencing.

Children are required to start school by the time they turn six. If your child will turn six during their last year of kindergarten, you will need to apply for a [School Exemption](#). The exemption must be submitted by 1 November the year before your child turns six.

Important Information for Children Born 1 January to 30 April

In line with school starting age, families with children born between 1 January and 30 April will have the choice of which year their child starts kindergarten. This means for three-year-old kindergarten, a child may attend as a younger child – two turning three-years-old – or as an older child – three turning four years old. This then follows on to four-year-old kindergarten and primary school, so families must consider if their child will be ready to go to school in two years. Most parents choose to wait an extra year if their child is born between 1 January and 30 April.

The conversations about when a child is ready for kindergarten and school needs to take place before the child begins their first year of funded kindergarten (three-year-old kindergarten). Once a child commences kindergarten, that will be considered one of their kindergarten years. Given the Department of Education criteria for an additional year of kindergarten, most children only have access to two years of kindergarten and then transition to school. It is very important that consideration is given to when a younger child (born 1 January and 30 April) will commence kindergarten.

Research shows delaying a child's start in formal education has immediate and long-term educational benefits. It is important to consider the child's social, emotional and cognitive development when making the decision of when to start kindergarten for younger children as this directly influences when the child will start school. Families should also consider how their child will cope progressing through high school if they are starting school as a younger child, as they are likely to be younger than most of their peers.

Families with children born between 1 January and 30 April will be contacted by a Preschool Field Officer to discuss the options available to them. It is recommended to consider what age you would like your child to start Primary School and work backwards. You can use the online ['When to Start Three-Year-Old Kindergarten' calculator](#) to find when your child is eligible to start kindergarten.

Where Can I Get Advice?

If you are unsure about the best time for your child to start kindergarten, you can speak to:

- A kindergarten teacher or educator.
- Maternal and Child Health.
- Preschool Field Officer.

You can also contact the Kindergarten Central Registration team at South Gippsland Shire Council on 5662 9200 or kinder@southgippsland.vic.gov.au.

Aboriginal and Torres Strait Islander Children

Koorie Kids Shine

Koorie Kids Shine was launched by the Victorian Government to help promote participation by Aboriginal and Torres Strait Islander children in kindergarten. In kindergarten, your child will learn to build their own sense of identity and how their own culture relates to the diversity of the world around them.

Kindergartens work hard to create culturally safe places for your child and family, and include Aboriginal perspectives in the learning curriculum and environment. You are encouraged to talk with your child's teacher about your own culture and beliefs, and how these can be incorporated into the activities at kindergarten.

Bupup Balak Wayipungang Initiative

The bupup balak wayipungang initiative is a Victorian Government early childhood initiative. It used to be called the Koorie Preschool Assistants Initiative (KPSA). This initiative supports better outcomes for Koorie children from birth to their transition to school.

It does this by:

- Supporting Koorie children and families to access and be involved in their local kindergartens.
- Promoting inclusion and cultural safety in kindergartens.
- Supporting kindergarten services and programs to include Aboriginal perspectives in their practice and curriculum.

The new name for the initiative is 'bupup balak wayipungang' which means 'helping/supporting the young kids' in Dja Dja Wurrung language. The name of the role (formerly Koorie Preschool Assistant) is 'wayipungitj', which means 'supporters'.

The wayipungitj's role focuses on four key areas:

- Participation.
- Practice.
- Community.
- Family.

These areas guide the work and have four aims:

- Koorie children have better access to kindergartens, and they take part more.
- Kindergarten services are more culturally inclusive and welcoming.
- Local Aboriginal communities get involved in developing and supporting culturally inclusive kindergarten programs.
- Stronger relationships with families. This supports Koorie children to take part in early childhood programs and services.

Kindergarten for Culturally and Linguistically Diverse Children

All children should feel welcome at kindergarten, regardless of their background. Kindergarten groups will often have a number of children from different cultures and backgrounds.

You are encouraged to talk with your child's teacher about your own culture and beliefs, and how these can be incorporated into the activities at kindergarten.

The Department of Education has many [translated resources](#) to support families to access kindergarten and early years services.

South Gippsland Shire Council can also arrange for an interpreter to help with the kindergarten registration process. Contact the Kindergarten Central Registration team on 5662 9200 or kinder@southgippsland.vic.gov.au to arrange an interpreter.

Children with Additional Needs

Every child should have access to education and have the right to take part in education on the same basis as their peers, regardless of their abilities. Kindergartens must take reasonable steps to make sure their programs are designed so your child can take part. It is important you include details of any additional needs on your registration form and discuss these needs with your child's kindergarten at enrolment to ensure the appropriate adjustments can be made.

Your child's kindergarten is able to access additional support to ensure your child is able to fully participate in the kindergarten. These programs are:

- Kindergarten Inclusion Support (KIS) Program.
- Preschool Field Officers.



Cost of Kindergarten

From 2023, all children in Victoria eligible for three- and four-year-old kindergarten can access [Free Kinder](#), when attending a participating kindergarten. This is available at both stand-alone (sessional) kindergartens and long day care (childcare) centres.

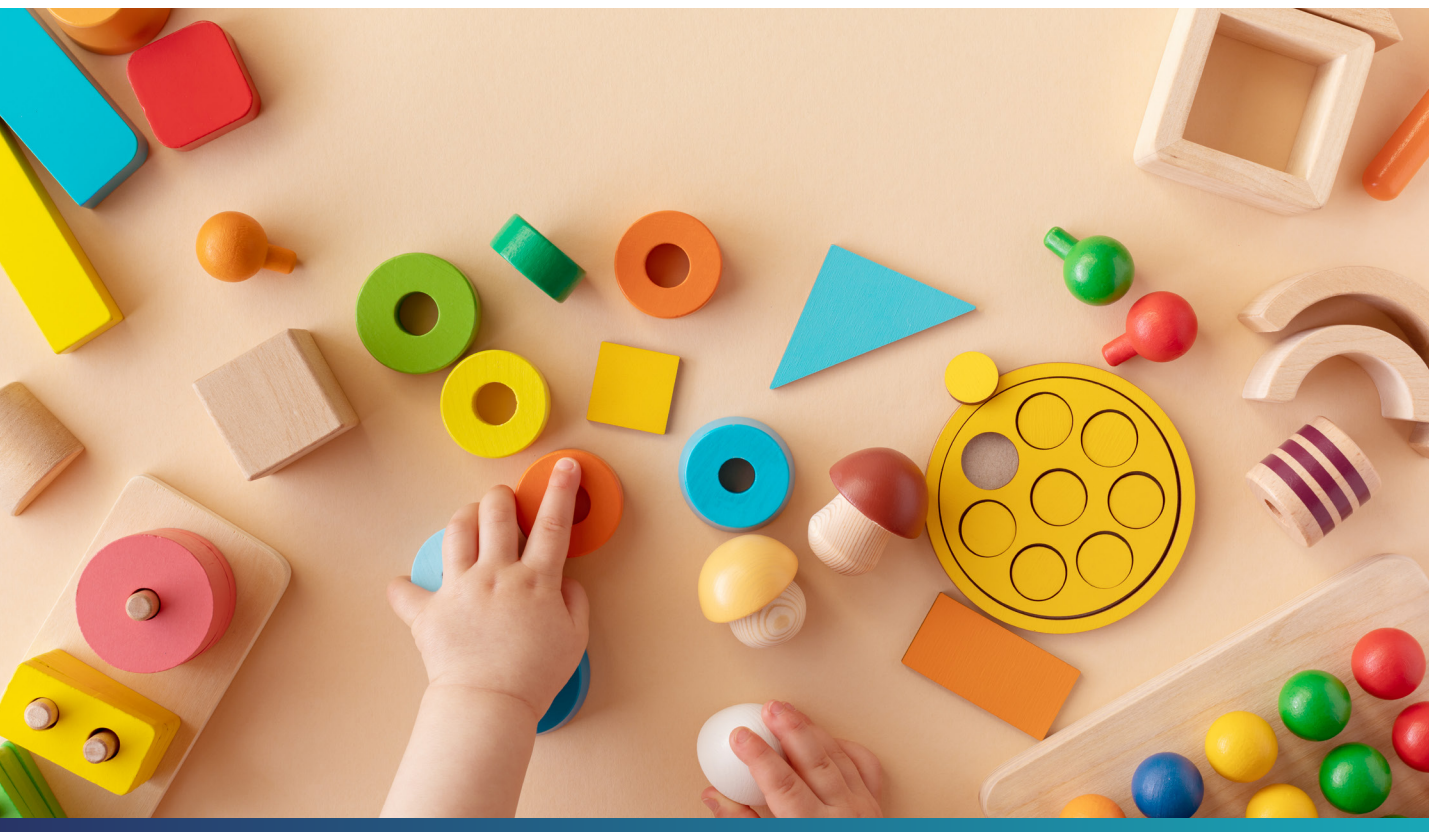
All kindergarten services participating in central registration offer Free Kinder if your child attends the sessional kindergarten programs. If the kindergarten programs offer before or after kindergarten care, or they are attending as part of a long day care program, there will be additional costs. These costs vary and need to be discussed with your preferred kindergarten service.

Participating kinder programs will receive funding directly from the Victorian Government, so families are not out of pocket (and don't have to claim the savings back).

For families with children enrolled in kindergarten programs at a long day care service, Free Kinder means a fee offset of up to \$2,000 per child at participating services.

If your child is enrolled in a funded kindergarten program that is offering less than 15 hours per week, the fee offset will be applied pro-rata. For example, for a child enrolled in the funded kindergarten program for 10 hours, their fee offset would be \$1,333.34.

Long day care centres are required to pass on the full amount to families as a direct reduction in their out-of-pocket fees. This will provide a free program for some families and a significantly reduced cost for other families, depending on service fees, number of days attended, and the amount of Commonwealth subsidy received.



Immunisation

Immunisation programs in Victoria have been extremely effective in reducing vaccine preventable diseases. However, diseases such as measles and whooping cough continue to occur in the community, indicating that immunisation levels are not optimal.

Do I Need Proof of Immunisation When Registering for Kindergarten?

Yes, proof of immunisation is required to complete your kindergarten registration. An Immunisation History Statement from the Australian Immunisation Register (AIR) is the only form of documentation accepted.

Do I Have to Immunise my Child?

Under the [No Jab, No Play](#) legislation, families need to provide evidence that their child has received all the vaccines they need to confirm enrolment in kindergarten.

The kindergarten services cannot confirm a child's enrolment unless the family has provided documentation that shows the child:

- Is fully vaccinated for their age.
- Is on a recognised catch-up schedule if they have fallen behind with vaccinations.
- Has a medical reason not to be vaccinated.

'Conscientious objection' to vaccination is not an exemption.

If your child isn't up to date with immunisations, you can contact the Immunisation team at South Gippsland Shire Council or your health care provider to arrange a catch-up schedule. You can book into a [free South Gippsland Shire Council immunisation session](#) to get your child's immunisation.

What Immunisation Documents Do I Need to Provide When Enrolling?

As part of your kindergarten registration, a copy of your child's Immunisation History Statement from the Australian Immunisation Register will be required as evidence of their immunisation status. You can get a copy of your child's statement by contacting the Australian Immunisation Register by:

- Visiting Medicare Australia online at <https://my.gov.au> (quickest way).
- Calling 1800 653 809.
- Emailing acir@humanservices.gov.au.
- Visiting a Medicare or Centrelink office.

For help, visit: www.health.gov.au/healthtopics/immunisation

What If My Child Can't be Vaccinated for Medical Reasons?

A medical doctor determines if a child has a medical reason (i.e. anaphylactic reaction to a vaccine ingredient) to not receive a specific vaccine/s. This is a medical contraindication.

A doctor completes, signs and submits an Immunisation Medical Exemption Form to the Australian Immunisation Register database, who will update your child's record. An Immunisation History Statement will show which vaccine/s your child is unable to receive and indicate the due date for other vaccinations.

Overseas Vaccines

Children vaccinated overseas must have their vaccine records assessed and be offered vaccination as required. Overseas vaccines can be recorded by submitting the Australian Immunisation Record Immunisation History form. This can be submitted by your immunisation provider / GP. The Australian Immunisation Record updates the child's record and parents can request an Immunisation History Statement indicating due dates for future vaccinations for enrolment.

You can contact South Gippsland Shire Council's Immunisation team on 5662 9200 if you require help with submitting your child's overseas immunisation records.

Kindergarten Central Registration and Enrolment Scheme

The Central Registration and Enrolment Scheme is often referred to as Central Registrations, Kindergarten Registrations or CRES.

The Central Registration and Enrolment Scheme is funded by the Department of Education and operated by South Gippsland Shire Council on behalf of participating kindergarten services in the South Gippsland Shire.

The Scheme is a single point for families to register for any of the participating kindergartens. This means families only need to complete one registration form to apply for multiple kindergarten services in South Gippsland. South Gippsland Shire Council uses an equitable registration and allocation process for families to access kindergartens within the municipality.

South Gippsland Shire Council does not manage any kindergarten services. They are managed by either not-for-profit volunteer committees, not-for-profit early years managers or private enterprises.

The Scheme aims to:

- Ensure the maximum number of children receive their kindergarten preference.
- Provide a transparent and equitable allocation process.
- Support the registration and provision of funded kindergarten places.
- Maintain relevant data to ensure the effective future planning of kindergarten services.

Families register for kindergarten through the Scheme and can nominate up to three local kindergarten programs of their choice and participate in the allocation process. This provides a streamlined, transparent and fair allocation process.

How to Register for Participating Kindergartens

Complete the [online registration form](#) in the year prior to your child starting kindergarten.

A new registration form needs to be completed for each year they are attending kindergarten.

If you are having difficulties accessing our online registration form, please contact South Gippsland Shire Council's Central Registration team on 5662 9200 for assistance.

Registration Dates

	Dates	Offers
First Round	1 May to 30 June.	First week of August.
Second Round	1 July to 31 August.	First week of October.
Third Round	Proceed on a weekly basis following acceptance of second round offers.	

Registrations may be submitted for the remainder of the year, but will not be included in the first or second round of allocations, unless they are received by the required date.

Any registrations received from families living outside of the South Gippsland Shire will not be processed until after completion of Second Round offers, unless their preferred kindergarten is the closest kindergarten to their home.



Allocation and Offer of Kindergarten Places

When completing the registration form, each family will nominate three preferences for kindergarten services and be asked to answer questions about your family and child. These questions help us allocate children to kindergarten places in accordance with priorities set by the Department of Education and Training and agreed local priorities.

Kindergarten offers are sent to families by email. Families have 14 days to respond to their offer.

Who Gets Priority for Kindergarten Places and How Are Places Allocated?

Kindergarten places are not allocated based in order of registration date i.e. 'first in best dressed'.

Places are allocated according to the priorities set by the Department of Education and Training and the agreed local priorities.

Children who meet the Department of Education and Training's Priority of Access criteria will always receive the highest priority, followed by children meeting the local priorities.

Places will be offered in order of highest priority to lowest and are allocated via a computer-generated selection process. When there are numerous registrations of the same priority, randomised computer-generated allocation based on the available kindergarten places is completed.

High Priority set by Department of Education

Priority One

Applies to all children meeting the criteria below regardless of residency:

- Children / family member known to Child Protection / Orange Door.
- Asylum seeker and refugee children.
- Aboriginal and/or Torres Strait Islander children.

Priority Two

Applies to all children meeting the criteria below and live in the South Gippsland Shire:

- Child or parent holds a Commonwealth Health Care Card, Pensioner Concession Card, or Veteran Affairs Card.
- Multi-birth children (triplets or more).
- Children with additional needs who:
 - » Require additional assistance in order to fully participate in the kindergarten program.
 - » Require a combination of services which are individually planned, or have an identified specific disability.
 - » Have an identified developmental delay.

Local Priorities set by South Gippsland Shire Council

Children are prioritised for kindergarten places in the following order:

- Families or children that meet special consideration criteria.
- Apply zoning for closest kinder.
- South Gippsland Shire residents who are an existing family.
- All other South Gippsland Shire residents.

If zoning for the closest kindergarten is applied as part of the local priorities, children may be prioritised for a place at a kindergarten in the same town as their zoned Government School (except where that town does not have a kindergarten such as Tarwin Lower and Nyora). The Department of Education and Training's [Find My School](#) or [Find a Kinder Program](#) will be used to determine the closest kindergarten.

Children residing out of South Gippsland Shire will only be allocated in third round, unless they meet the Department of Education and Training's Priority of Access Guidelines or the kinder is the closest to their place of residence.

- Out-of-shire residents who are an existing family or meet special consideration criteria.
- All other out-of-shire residents.

Families that live out of the South Gippsland Shire

South Gippsland Shire Council provides kindergarten facilities and operates the Central Registration and Enrolment Scheme to ensure all children in the South Gippsland Shire have access to kindergarten.

Families living outside of the Shire are welcome to register for kindergartens in South Gippsland. However, these registrations are not processed until after second round offers have been accepted, unless the closest kindergarten to their place of residence is in the South Gippsland Shire. This ensures all children living in South Gippsland have access to a kindergarten place.

South Gippsland Shire Council will use the [Find A Kinder Program](#) to determine a family's closest kindergarten.

Can I Change My Preferences?

You can change your preferences until the registration closing date in the year prior to your child starting kindergarten. Changes after this date are subject to availability of places. To change your preferences, contact the [Central Registration team](#) and you will be sent an email with a link to update your preferences.

When Will I Receive My Offer?

Offers will be sent by email after the close of each round. Refer to the [registration dates](#) for more details on timing.

The email will advise you of your child's kindergarten place and provide instructions on how to respond to your offer. You will have the option to:

- **Accept** – confirm your child will attend the kindergarten they were offered).
- **Accept and Waitlist** – accept the offer and remain on the waitlist for a higher preference offer. This option is only available if you do not receive your first preference.
- **Decline** – your child is removed from the registration list and will not receive any further offers.
- **Defer** – your child is removed from the current registration and their registration is moved to the following year. You will be contacted when registration opens the following year to update your preferences.

Offers must be responded to within 14 days.

What Happens if I Don't Respond to my Offer?

If you do not respond to your emailed offer within 14 days, South Gippsland Shire Council's Central Registration team will follow up by phone and email. If attempts to contact you are unsuccessful, the registration will be cancelled. This means you will not receive any further offers for kindergarten. It is important that we have your correct contact details to ensure your place is not cancelled.

What Happens if my Child Misses Out on my First Preference?

You will be offered a place based on your other preferences. You will be offered the opportunity to remain on the waitlist for your preferred kindergarten place. The waitlist will be maintained until the start of Term 1. If we are unable to offer you a place in any of your preferences, you will be contacted to discuss other options available.

What If I Don't Want to Change my Preferences and Only Want my First Preference?

Your registration will be moved to an unallocated registration and be involved in randomised selection for any available places that may arise at your preferred kindergarten as they become vacant. There is no guarantee that places will become available and there may be others on the waitlist. We recommend you accept a kindergarten place and waitlist for a higher preference to ensure your child doesn't miss out on a kindergarten place.

What If my Child Isn't Ready for Kindergarten?

If you decide your child isn't ready to start kindergarten in the year you have registered, we can cancel your registration for that year and move it to the following year. You will need to review your registration the following year, as government requirements can change, and additional information may be required. You will be contacted by email when registrations open for the following year.

If your child was registered to attend four-year-old kindergarten and they haven't attended three-year-old kindergarten, you may choose for your child to attend a three-year-old program instead (subject to availability).

A decision about whether your child is ready to start kindergarten must be made prior to commencing because once your child starts, that year will be their funded year of kindergarten.

You can use the [Starting Age Calculator](#) and refer to the [Important Information for Children Born 1 January to 30 April](#) section of this document for more information.

Can I Keep the Kindergarten Offer for the Next Year Instead?

If you decide to defer your child's attendance until the following year, we can move your child's registration to the following year. We will email you when registrations open to confirm the registration details and update your preferences. As demand for kindergarten places and the programs offered by kindergarten services can change, we cannot guarantee your child will receive the same offer next year. The decision to defer needs to be made before your child starts kindergarten as once your child starts, that year will be their funded year of kindergarten.

Support and information around the decision to defer is available from kindergarten educators. If you have developmental concerns, you may also wish to speak to your Maternal and Child Health Nurse or a Preschool Field Officer.



Enrolling in Kindergarten

Once you receive your kindergarten offer, the next step is to complete your child's kindergarten enrolment. The enrolment process is handled by each kindergarten provider and collects important information about your child. Your child cannot attend kindergarten until this enrolment process has been completed.

How Do I Enrol in Kindergarten?

Once you have accepted your kindergarten offer, you will receive an enrolment form to complete. The kindergarten enrolment process is managed by each individual kindergarten provider.

The enrolment process collects additional information to form part of your child's Enrolment Record and can include:

- Proof of child's birth.
- Copies of concession cards.
- Evidence of the child's immunisation status.
- Allergies or medical conditions.
- Additional information about the child – their interests and hobbies.
- Any additional needs of the child.
- Emergency contacts.
- Details of any parenting orders or legal matters to do with the care or safety of your child. The kindergarten must keep your information private.

When Does My Child Start Kindergarten

Kindergarten generally runs in-line with school terms. Your kindergarten will be in contact with you to provide all the information you need for your child to start kindergarten.

Any questions about starting kindergarten should be directed to your child's kindergarten provider.

SOUTH GIPPSLAND SHIRE COUNCIL

9 Smith Street (Private Bag 4) Leongatha VIC 3953

Phone: 5662 9200 Fax: 5662 3754

Email: council@southgippsland.vic.gov.au

Website: www.southgippsland.vic.gov.au

Facebook: www.facebook.com/southgippslandshirecouncil



South Gippsland
Shire Council