

South Gippsland Shire Film Application Quick Guide

South Gippsland Shire is a film friendly location and South Gippsland Shire Council (Council) understands the economic benefits of filming in the region. The Economic Development and Tourism Unit is available to guide you through Council's processes to ensure filming success.

Council is required to comply with state legislation (Filming Approval Act 2014) and Council's filming approval process is consistent with Film Victoria. A film permit is required where filming occurs on land which is owned, managed, or under the care of South Gippsland Shire Council.

In order to accommodate small to large productions 'A Guide to Filming in South Gippsland' is very detailed so please use Council's easy follow process to assist you with completing your film permit application:

1. Talk to Council's Economic Development and Tourism Unit prior to any application by contacting 03 5662 9200.
2. See Council's website and click on the link: [Filming in South Gippsland](#)
3. Read and familiarise with Council's 'Film Policy' and 'A Guide to Filming in South Gippsland'.
4. Ensure you have current Public Liability Insurance (minimum A\$10,000,000). For student/community filming projects please discuss with Council.
5. Complete 'Film Permit Application' and supporting documentation where required.
6. Email application and support documentation via email to:
filmenquiries@southgippsland.vic.gov.au
or post:
Film Application
Economic Development and Tourism Unit
South Gippsland Shire Council
Private Bag 4
LEONGATHA VIC 3953

We will process the 'Film Permit Application' as soon as possible. Please note complex productions are likely to require more time.



South Gippsland
Shire Council

A Guide to Filming in South Gippsland Shire

May 2015



South Gippsland Shire Council
9 Smith Street (Private Bag 4), Leongatha 3953
council@southgippsland.vic.gov.au
www.southgippsland.vic.gov.au



PAGE INTENTIONALLY LEFT BLANK

CONTENTS

SECTION 1: FILMING IN SOUTH GIPPSLAND SHIRE	4
SECTION 2: APPLYING FOR A FILM PERMIT	5
SECTION 3: EXTERNAL AGENCIES AND ISSUES TO CONSIDER.....	13
SECTION 4: ADDITIONAL INFORMATION	18
SECTION 5: GLOSSARY	21
SECTION 6: APPENDICES	25

Disclaimer

While every effort has been made to ensure the accuracy of the information in this guide at the time of its publication, the information provided is subject to change at any time and its accuracy is not guaranteed. Council accepts no liability or responsibility arising from the use or reliance on the information or data contained in the guide.

SECTION 1: FILMING IN SOUTH GIPPSLAND SHIRE

Introduction

Victoria is internationally recognised as a world-class screen production destination with excellent crews, stunning locations, film friendly location providers and exceptional production facilities.

In turn, screen production has a profoundly positive impact on the state and its residents - economically, culturally and socially.

This guide has been produced in partnership with Film Victoria as a resource for filmmakers seeking permits or approvals to film on public land within the jurisdiction of South Gippsland Shire Council (Council).

It covers the practical aspects of the approval process, from planning your production, to applying for permits from a variety of public agencies, to the many resources available to assist you.

It reflects Council's ongoing commitment to supporting film and television production. We hope that you find the guide useful and look forward to assisting you in South Gippsland Shire with your next production.

Acknowledging South Gippsland Shire Traditional Land Owners

Council respectfully acknowledges the Traditional Custodians of the land, Elders past and present, their Spirits and Ancestors.

Why Film in South Gippsland Shire?

The State of Victoria is committed to supporting a vibrant and professional film and television industry. Council is proud to be supporting the screen industry and the opportunities it brings to businesses and the broader community.

We have experience playing host to notable feature films, documentaries, television series and television commercials and are proud to facilitate a growing number of productions that choose to locate their filming in South Gippsland Shire.

The Economic Development and Tourism Unit are able to provide advice and expertise on how to make the most of your time when dealing with Council including information about specialised filming requirements. We look forward to assisting with your production needs.

Our Commitment

South Gippsland Shire is film friendly and the Economic Development and Tourism Unit is here to help make your next filming activity a success.

Council's objective is to ensure your experience working in South Gippsland Shire is a positive and productive one.

SECTION 2: APPLYING FOR A FILM PERMIT

What is a film permit and when is it necessary?

Public agencies can approve filming on public land as a permit, licence, approval, location agreement, or as some other form of written permission.

A wide range of filming may require a permit, including student, commercial, community and not-for-profit productions, as well as still photography.

A film permit ensures public space is used safely and in accordance with all applicable legislation, local laws and regulations. At the same time, it ensures any disruption is minimal, public land and facilities are managed effectively and that anyone who may potentially be impacted is notified.

The *Filming Approval Act 2014* sets in place specific standards for public agencies processing and approving permits for commercial filming.

Council requires a film permit for filming activity that occurs on land that is owned, managed or under its care. Please also refer to South Gippsland Shire Council Film Policy May 2015.

The role of the Film Liaison Officer at Council

Assessing a film permit application often requires consultation with different teams within a public agency. The Economic Development and Tourism Unit is your single point of contact for South Gippsland Shire Council during the application process.

We understand that filming is a cost-sensitive and deadline-driven business and we are here to assist you so that you can get your permit or approval as quickly as possible and with minimum inconvenience.

Planning your filming

Getting started

If you do not already have one, we strongly advise you to appoint an experienced location manager. This person will be the key liaison between the production and Economic Development and Tourism Unit. Having someone who understands the local environment and processes will help your production run more smoothly and efficiently.

It is crucial to allow sufficient time for planning your production, familiarising yourself with the practicalities of filming and determining what additional support you might need.

Engaging with the Economic Development and Tourism Unit early in the process of planning your production will help streamline the application process and keep everyone informed.

If the planned activities are complex, please contact us as soon as possible and before submitting your application form, as some discussion and negotiation may be required.

It is sometimes useful to arrange a face-to-face consultation with Economic Development and Tourism Unit to discuss the production before any paperwork is submitted. The Economic Development and Tourism Unit should be able to give an idea of the viability of

filming at your preferred locations, including specific dates and times. This is also the time to 'flag' issues or unusual filming requirements, like erecting structures, using firearms, or major disruption to traffic.

In our experience, proactive relationships achieve the best outcomes. The Economic Development and Tourism Unit may be able to assist with location options, traffic management, consultation advice and other assistance with film permit applications.

Submitting your application

Your film permit application should be submitted formally and in writing as soon as you have enough information to supply to the Economic Development and Tourism Unit.

All supporting documentation should be submitted at the same time, as this is the most efficient way of processing your application. We understand that this can occasionally be difficult and if some information is presented at a later date it may still be possible to approve the application. Speak with Film Liaison Officer to discuss this possibility. Delays in providing supplementary documentation without speaking with Economic Development and Tourism Unit may result in a delay in processing your application.

It is also important to consider the impact of the weather on your filming activity and to set up contingency plans to deal with unexpected changes. South Gippsland Shire Council Film Permit Application features 'weather hold' alternative dates, but please let us know if there are any other factors that may cause changes to your filming date or location.

Filming applications can be lodged by contacting the Economic Development and Tourism Unit on 5662 9200 or emailing filmenquiries@southgippsland.vic.gov.au. Please refer to the website: [Film Friendly in South Gippsland](#) for more information.

The location manager and / or production contact warrants that all information provided in or attached to the application is true and correct in every particular way, and that no material or relevant information has been omitted.

Timeframes

Applications for filming that do not have any impact on the flow of traffic or significant pedestrian impact should be submitted least (5) business days before you intend to start filming.

Applications that do require traffic management planning or significant pedestrian management should be submitted allow for (30) days' notice. This allows enough time to contact any residents, businesses or public authorities in the immediate vicinity of the location and streamlines the communication process.

Decision and notification

Once it is submitted, the Economic Development and Tourism Unit will assess your application and contact other relevant internal stakeholders to let them know about the request and coordinate any other internal approvals that are needed.

We will notify you of Council's decision in writing, including details of terms and conditions that apply and any associated fees.

The location manager and / or production contact warrants that all information provided in the 'Film Permit Application' and any additional documents required are true and correct and that no material or relevant information has been omitted.

Filming begins

Once you have been issued with a valid Film Permit, you may begin filming. The Economic Development and Tourism Unit will already have exchanged contact details with the location manager and/or production contact, as they are responsible for managing the location and adhering to the permit's terms and conditions.

When filming is over, the location must be left in the same condition as it was found. If it has been changed or damaged in any way, the production company is responsible for restoring it to its original condition and paying for any repairs. We also expect the crew to leave the area in a clean and tidy condition.

Non-compliance with film permits

The South Gippsland Shire Council reserves the right to cancel a 'Film Permit' in the event of activities not being conducted in accordance with the 'Film Permit', Film Policy and the 'A Guide to Filming in South Gippsland Shire'.

Council makes every effort to accommodate filming, but occasionally a production breaches the terms and conditions of a film permit.

Council may take any of the following actions:

- Cancellation of any approval that has been issued for the day in question.
- Instruction to cease all activities immediately and remove all personnel and equipment from the site.
- Forfeit of any and all fees paid to South Gippsland Shire to offset any losses or damages incurred.
- Additional fees may be incurred to offset any losses, damages or reinstatement costs
- Restriction on the use of a particular location for further filming.

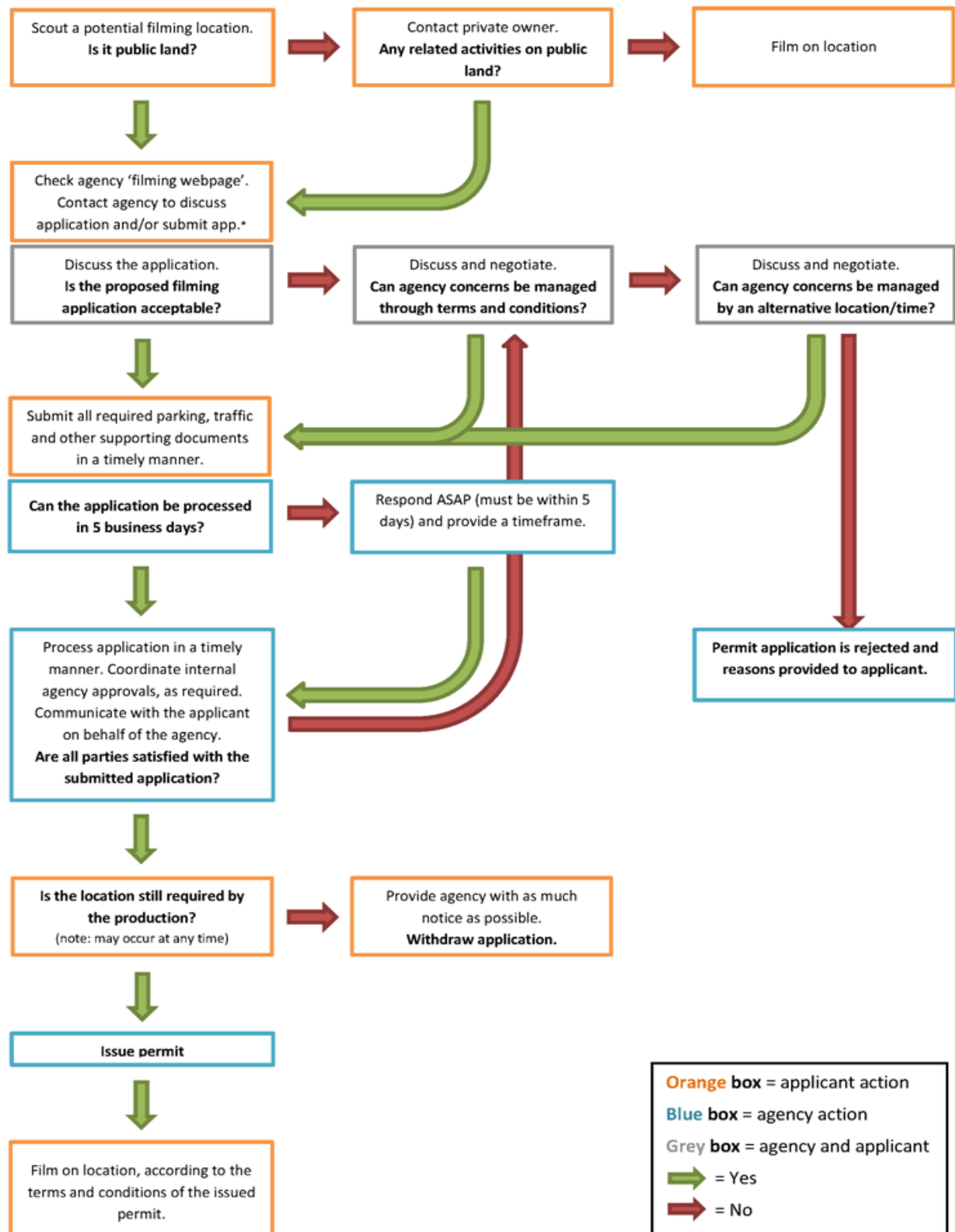
If there are complaints from members of the public, Council may investigate them.

Production companies that are experiencing difficulties on location can contact South Gippsland Shire Council on 5662 9277 for assistance.

Victorian Screen Industry Code of Conduct

Full details of filmmaker responsibilities can be found in Film Victoria's *Victorian Screen Industry Code of Conduct*. To obtain a copy, visit www.film.vic.gov.au

Best practice film permit application and approval process



* note: agency website will indicate whether an initial phone call is preferred

Please note: Some locations may require detailed discussion over a period of time prior to a filming application being submitted.

Whom the Film Liaison Officer may coordinate with

Assessing a film permit application can require consultation with different areas within Council. The Economic Development and Tourism Unit provides industry with a seamless customer experience throughout the process.

Parks, Gardens, Sporting Facilities, Cultural Institutions

Under the *Crown Land (Reserves) Act 1978*, Council manages a number of the parks, gardens, other open spaces and land owned or under its custodianship. These public spaces may be environmentally sensitive and need to be protected wherever possible. All applications will be assessed on their merits and the Economic Development and Tourism Unit will discuss any permissions, permits or restrictions with the applicant on a case by case basis.

The location manager and/or production contact:

- Must request permission from The South Gippsland Shire Council to install any tents or marques in council parks or open spaces, and must consult with Council to avoid damage being caused to Council infrastructure and assets for example: underground sprinkler systems, plumbing and so on;
- May be required to obtain a building and or planning permit if there is a need to construct buildings/structures or undertake certain activities;
- Will not allow any wilful damage to the locations or contents of the location;
- Will remove all its personal property and rubbish from the location and restore the location to the condition it was in prior to filming. The company producer should dispose of waste from the site in an environmentally sustainable manner including the recycling and reuse of material where practical. The use of Council's Waste Wise trailer for this purpose is strongly encouraged please discuss this with the Economic Development and Tourism Unit should you think it may be required.

Council will not allow any permanent alterations to the locations or contents of the location without express prior permission.

Please let the Economic Development and Tourism Unit know if you wish to erect structures (i.e. pop-ups, marquees, etc.) in the following locations, as there may be restrictions.

Vehicles are not permitted to enter Council parks and gardens without written approval.

Parking

Generally, vehicles form part of filming requirements, for example, wardrobe and make-up vans, equipment transporters, lighting trucks, catering vans and so on.

Arrangements can be made to accommodate these vehicles. Before you begin filming, it is best practice to carry out a parking bay audit around the proposed site and then submit the following information to us:

- The total number of spaces you require.
- Specific date and time of filming.
- Street details, including names of streets and specific locations of where vehicles will be parked.
- A mud map showing where parking is required, with the number of spaces clearly marked (there is an example in the appendixes).

The Economic Development and Tourism Unit will forward all parking applications to the Local Laws Department. Please submit your parking request (5) business days before filming begins.

Once a booking has been approved, you will be given a written confirmation, which must be displayed in the vehicles according to the permit's terms and conditions.

Fees may apply to parking and these vary according to the number of spaces and days the parking is required.

Assistance cannot be provided by Council staff for reserved parking in busy areas, unless neighbouring traders/residents are provided with adequate notice.

Council's roads

Council receives many requests to film on its roads, laneways, footpaths and in public open spaces. The location manager and /or production contact maybe required to complete a Road Activity Permit if filming activity is likely to interrupt traffic or pedestrian flow on roads, laneways or footpaths owned by Council.

(See Section 3 for more information on VicRoads managed road networks).

Significant or sensitive locations

There may be significant or sensitive locations within South Gippsland Shire. In these circumstances the Council may require additional negotiation to any filming activity in these locations. If this has been identified, the Economic Development and Tourism Unit will discuss this further with the location manager and/or production contact. Please visit our website for more information on [Film Friendly in South Gippsland](#)

Low impact filming

In some cases, if filming is considered to be low impact, a permit can be approved in a shorter timeframe. Council encourage the development of Community Film and Television Projects. These include those for student projects, charitable activities or those whose subject matter relates to the cultural heritage of the South Gippsland Shire. In these instances Council may consider alterations to these guidelines where these may be an impediment to these endeavours and where public safety maintained.

Low impact filming involves minimal equipment and crew, and causes little disruption to pedestrians, traffic and residents.

An example of low impact filming is a two-person crew gathering 'vox pops' for a football commentary show.

This type of filming can generally be approved in (2-3) business days, since it does not require sign off from other stakeholders.

To discuss whether your filming is eligible for low impact status, contact the Economic Development and Tourism Unit on 03 5662 9277 or email filmenquiries@southgippsland.vic.gov.au

What documents do you need to submit?

The following documents are compulsory in South Gippsland Shire. If you are unable to provide any of them, please discuss this with us rather than submitting an incomplete application.

Description of your filming activity

A description outlining what is being filmed on the day: What will take place? What will the cast and crew be doing? Are specialised vehicles or equipment going to be used? Your description should include any disruptive or potentially hazardous activities such as the use of firearms or explosions.

Hazardous Materials

Any dangerous substances/hazard materials and articles to be brought onto location will be listed as such in the 'Film Permit Application'. Before permission may be given, the production company/ producer may be required to provide a safety report in regard to the proposed filming activities in accordance with relevant film and television codes and legislation including the Victorian Occupational, Health and Safety Acts and regulations. A copy of the safety report may be required to accompany the 'Film Permit Application'.

Location manager contact details

The name/s of the person responsible for the set and the unit base on the day of filming must be provided as part of the application process.

Site plan/mud map

A site plan/mud map should provide details of the exact location of the filming activity, as well as what equipment, infrastructure and major props, sets or vehicles will be used and where they will be placed on site. See the appendixes for an example.

Site plan/mud map for unit bases and essential vehicles

A unit base/essential vehicle mud map should indicate where your unit base is located, including all marquees, vehicles and other infrastructure. For an example, see the appendixes.

Infrastructure, equipment and props list

A high level list detailing what equipment will be on site on the day of filming, i.e. track and dolly, trolleys, camera, lights, reflector boards, marquees and any major props proposed. See the appendixes for an example.

Public liability insurance

The South Gippsland Shire require evidence of public liability insurance that comprehensively covers your legal liabilities in relation to your filming activities. The amount of cover for filming must not be less than A\$10,000,000 public liability insurance which is to be submitted to the Economic Development and Tourism Unit as part of the application process prior to issuing the 'Film Permit'.

Traffic and pedestrian management plans (if applicable)

If filming is likely to interrupt the normal flow of traffic or pedestrian or cycling access, including being stopped, held or diverted, you must provide a traffic and/or pedestrian management plan from an accredited traffic management company. Also that any signage erected around the film location must comply with all the requirements of VicRoads and Council's Engineering Department as per the Road Management Act 2004.

The location manager and/or production contact maybe required to complete a Road Activity Permit if filming activity is likely to interrupt traffic or pedestrian flow on roads, laneways or footpaths owned by Council.

Risk management plan

Filming in South Gippsland Shire may require a risk management plan to be completed. This is to demonstrate that a risk assessment has been conducted. Risk Management plans must identify any potential hazards and actions and how it is intended that the production company will mitigate those risks associated with the filming activity. Please refer to the appendixes for an example.

Communication strategy with stakeholders (if applicable)

Clear communication with stakeholders is important before filming begins. It helps to minimise any impact on surrounding stakeholders and can be very useful when filming actually begins.

A draft stakeholder letter, if required, must include contact details of the location and/or production contact in case stakeholders have questions on the day or need arrangements to be made for access. Please see the appendixes for an example.

Once the wording of the letter has been provided to the Economic Development and Tourism Unit you should confirm when the letter drop will take place and which streets are involved. Council may suggest additional streets to be included. For all lane or road closures, the date of the letterbox drop will be determined in consultation with the Economic Development Coordinator and must occur prior to the scheduled filming.

Filming schedule/running sheet

A filming schedule sets out the filming times and locations in chronological order, including bump-in and bump-out times. See the appendixes for an example.

Health services permit

If your filming activity includes catering, you may need to submit a Statement of Trade and a copy of the Caterers Victorian Food Act Registration. If it involves catering to the general public, you must meet further requirements.

Waste Management Plan

Film crews are expected to remove all of their waste when they leave a location. In addition to the disposal of general rubbish, a waste management plan may be required to ensure that any waste resulting from the filming activity is cleared from the site (for example, scraps of tickertape paper, special effects remnants, animal waste etc). This requirement may be added to the terms and conditions of a permit to ensure compliance.

Fees and charges

Council will not charge a fee for the issuing of a 'Film Permit'.

Council may however negotiate a fee for filming activity where Council assets are used or where a significant event coordination and agency staff (officer time) is required. In these circumstances these fees will be communicated clearly to the location manager and / or productions manager.

All expenses associated with advertising, traffic control, road closures, repair damage and any other costs incurred in the facilitation of the application and production i.e. building/planning permits, will be borne by the applicant.

Under some circumstances a bond may be required to offset any potential damage to public amenities. This may be required to be paid to Council not less than 24 hours prior to the filming date. This bond may be applied by the Council, at its sole discretion, to repair or replace any losses as a consequence of the filming, including unpaid fees or service

charges. The balance, less deductions, made in accordance with the Film Policy and its guidelines will be refunded within 14 days of completion of filming at the location.

Council have the right to waive or vary fees in certain circumstances.

Local Laws

All activities must comply with South Gippsland Shire Council's local laws and other relevant laws and regulations (except where written permission is required), and the laws or regulations of any other authority having jurisdiction over the area where filming is to take the place.

Council Representation

Council is entitled to have a representative present at mutually agreed times (as a non-paid observer). Where the nature of the filming requires a Council representative to be present for safety or other reasons this will be at the expense of the location manager and/or production contact unless otherwise agreed.

The location manager and/or production contact will ensure that all crew, cast and other persons it employs follow reasonable directions given by Council or its delegate.

The location manager and/or production contact will not portray Council as endorsing or supporting any products or service or any views, opinions, attitudes or ideas suggested, conveyed, advertised canvassed, depicted, or otherwise expressed, without prior written consent from the Council.

The location manager and/or production contact will if requested by the South Gippsland Shire Council in the production of the film or video by the usual method of end credits or as mutually agreed.

SECTION 3: EXTERNAL AGENCIES AND ISSUES TO CONSIDER

A wide range of agencies issue film permits. Some agencies also issue approvals for activities related to filming. The most commonly approached agencies include:

- VicRoads – filming on arterial roads, highways etc., use of specialised filming vehicles and changes to vehicles for the purposes of filming.
- Victoria Police – police resources including traffic management and on screen appearance, 'generic' police uniform and equipment hire, research assistance and filming notifications.
- Public transport providers.
- Parks Victoria and the Department of Environment, Land, Water and Planning (DELWP)– filming on land under their jurisdiction, including coastal areas and assets, such as buildings, piers and ramps.

VicRoads

VicRoads manages Victoria's main roads and freeways, except for tollways, which are privately managed. These roads are referred to as arterial roads.

Local councils and other agencies, such as Parks Victoria and the Department of Environment, Land, Water and Planning (DELWP), manage local or non-arterial roads and roads in national parks and other restricted areas.

VicRoads generally supports filming on the road network, as long as road infrastructure is not damaged and there is no disruption to traffic flow and road safety.

You must have a permit from VicRoads if you are:

- Filming on arterial roads.
- Using specialist filming vehicles on arterial or non-arterial roads.
- Filming while talent/artists are under direction, while driving a vehicle.
- Using a modified vehicle on arterial or non-arterial roads. This includes camera mounts, rigging, and dressed vehicles such as police cars, left hand drives, or vehicles with changed number plates.
- Using an unregistered vehicle.
- Seeking exemptions from certain requirements of the *Road Safety Act 1986* and associated rules and regulations.

Applications to film on the roads network frequently involve traffic management, police involvement and an assessment of public safety. As a general guide, VicRoads requires a minimum of (5) business days' for applications including police traffic management that do not require police escort. Applications for specialist filming vehicles that require police escort or supervision may take longer to process.

Other considerations

If road rules or regulations are to be broken during filming, you must apply to VicRoads for an exemption from the *Road Safety Act 1986* or associated rules and regulations. There are some circumstances where VicRoads is unlikely to give permission for filming due to safety and public amenity.

Please note that it is important to contact VicRoads to discuss your particular requirements as early as possible when planning your production. Extra time may be needed for more complex requests (such as changes to infrastructure or to the speed limit), so it is best to contact VicRoads as early as possible.

VicRoads regularly updates its service operation and the most up to date information can be found at their website: www.vicroads.vic.gov.au

Traffic and Public Transport Management

Traffic and public transport management planning is essential to ensure that all traffic, including public transport, is considered and members of the public are not inconvenienced.

If filming is likely to interrupt the normal flow of traffic, cyclists or pedestrian access, including being stopped, held or diverted, applicants should provide a traffic management plan from an accredited traffic management company. A pedestrian management plan may also be required if filming is occurring where there is a disruption to pedestrian flow. The plan should outline the objectives and strategies for managing the proposed impacts in accordance with Australian Standards AS 1742.3 (2009).

You may need to contact the following organisations to discuss your plans.

Public Transport Victoria

If your filming activity is likely to affect public transport in any way, you must submit an Event Notification Form to Public Transport Victoria (PTV). If you do not notify PTV, it may seek costs as a result.

Victoria Police Film and Television Office

This unit is responsible for all liaisons between the film and television industry and Victoria Police. The advantage of this is that filmmakers do not have to approach individual police stations for advice or assistance and have a single point of contact when planning a production. The Film and Television Office coordinates the use of police resources such as traffic management and on screen appearances, 'generic' police uniforms, equipment hire and research assistance for filmmakers.

Victoria Police authorises, manages and controls traffic management during filming if it is required by VicRoads or other road authority. It does not issue film permits or exemptions, but enforces the law in every aspect relating to road management and ensures public safety.

Victoria Police must also be informed because any filming activity may cause concern to the general public. This will include all filming planned for public open space, any filming on roadways or use of a low loader and tracking shots on roads in general, and in particular, filming that requires the use of firearms, imitation firearms or special effects.

See [Useful Contacts](#) for Victoria Police contact details.

Notifying ESTA of your filming activity

You must complete the Victoria Police ESTA Filming Notification form to notify Emergency Services Telecommunications Authority (ESTA) of your filming activity if it involves firearms, weapons, special effects, private traffic management, mock police scenes or scenes which may cause public concern. The purpose of this is to reduce the number of false call-outs received by ESTA's 000 service when a member of the public mistakes a filming event for a real incident.

If your filming is likely to impact other emergency services (e.g. fire or ambulance) you must contact the relevant agencies directly before filming begins and inform them of your plans.

Timeframes

Information on timeframes can be found on the Victoria Police Film and Television Office website at www.police.vic.gov.au

Road closures, blocks and holds

For all road closures and/or hold and releases, you must submit an accredited Traffic Management Plan and Road Activity Permit to Council. The Economic Development and Tourism Unit will circulate your Traffic Management Plans and Road Activity Permits to the relevant internal stakeholders.

Specialist filming vehicles

'Tracking' and/or 'low loader' vehicles are designated as Special Filming Vehicles (SFVs) and their use on roads is considered a high risk activity.

VicRoads requires that Victoria Police authorise and control all traffic management when an SFV operates on a road. It must also authorise the use of vehicle 'camera mounts' and/or 'rigging shots'.

For this type of filming activity, VicRoads must be provided with details of the proposed camera mount or rig. It may also require a Traffic Management Plan, which must be carried out by an accredited traffic management company. If Victoria Police is involved, it will prepare a Traffic Management Operations Order, which is sent to the relevant road authority. A film permit can then be issued.

For definitions of specialist vehicles and equipment see the [Glossary](#).

Applying for a Film Permit when using a Specialist Filming Vehicle

Step 1: Contact VicRoads to ensure the appropriate vehicle registration is in place. For more information visit www.vicroads.vic.gov.au

Step 2: Visit the Council filming website and apply for a film permit. This will require you to complete an application form and provide supporting documentation.

Step 3: When lodging a film permit application where a Specialist Filming Vehicle is involved, you must provide Council with the documents listed below:

Vehicle Details

- A description outlining the type of vehicle and its proposed use.
- Vehicle registration number/licence.

Victoria Police Documents

- A copy of the Victoria Police Traffic Management Operations Order (TMOO).
- A copy of the ESTA Filming Notification Form.
- A copy of the Confirmation of Police Resources Document.

For more information on Victoria Police's requirements, please visit their website www.police.vic.gov.au

Parks Victoria and Department of Environment, Land, Water and Planning

Parks Victoria manages Victoria's diverse network of parks and reserves, including iconic destinations such as the Twelve Apostles, the Grampians, Wilsons Promontory and the Alps, accounting for nearly 18 per cent of the state.

Filming in state forests is managed by the Department of Environment, Land, Water and Planning (DELWP) and permits must be obtained from local DELWP offices.

Parks Victoria and DELWP also manage roads in national parks and other restricted areas.

A permit is required for all professional, student and some amateur filming and photography in the areas managed by Parks Victoria. In assessing film permit applications, Parks Victoria considers:

- Agency responsibilities under relevant legislation and regulations.
- Impact on public amenity.
- Safety and security, particularly activities which may increase liability risk exposure.
- Impact on the park environment and heritage assets.

- Operational issues, such as planned park activities, access to areas restricted for resource management, protection or safety reasons and availability of staff to supervise filming, if required.

Parks Victoria actively supports filming in Victoria's parks and works with applicants to manage these considerations through terms and conditions. Parks Victoria should be contacted as soon as possible before scheduled filming, especially for complex filming requests, to allow time for discussion and negotiation, if required.

For information on Parks Victoria's current filming and photography requirements and permit application forms, please visit www.parks.vic.gov.au

For DELWP and Parks Victoria contact details, see [Useful contacts](#).

Worksafe

Compliance with all statutory obligations relating to matters of occupational health and safety, Worksafe Victoria and any other statutory or regulatory requirements in the delivery of the production is mandatory. Filming may also need to comply with Worksafe legislation for No Go Zones. For details, visit www.worksafe.vic.gov.au

SECTION 4: ADDITIONAL INFORMATION

Noise management

Managing noise levels is an important part of Council's commitment to providing a liveable, supportive environment for all. During filming cast and crew should be considerate of anyone using the surrounding area so that sounds from vehicles, generators, cast and crew do not cause unnecessary noise disturbance.

The EPA's *Noise Control Guidelines, Publication 1254* provides guidance on noise and sound management. The guidelines are used as a basis for public agencies to assess the potential noise impacts of filming. You can find this at www.epa.vic.gov.au

Timing of the Film Production

Filming is not usually permitted between midnight and 6:00am. Unless Council approves a variation in writing, filming must only occur between the times specified in the 'Film Permit'. In instances where by a filmmaker wishes to film outside the usual permitted filming hours in residential or built up areas, request must be made to the Council at least (2) two weeks before the intended date of filming. The Economic Development and Tourism Unit will assess the impact of the 'Film Permit Application' and may request that all affected parties be notified in writing. Residents will be asked to immediately respond in writing if they have objections to the filming taking place. Once permission to lift the curfew has been granted, the location manager and / or production contact will be required to letter drop the area to ensure affected people are kept informed of the proposed activity.

Safety on set

Members of the screen industry in Victoria are responsible for securing the safety of employees, any individuals at the workplace and the general public. They must comply with occupational health and safety requirements under the law at all times.

All cast and crew on location must follow the direction of the safety supervisor by reading and understanding the production's Safety Report and take responsibility for individual and collective safety. Relevant sections of the Safety Report may need to be submitted to Council.

They must also be aware of the objectives and principles of the *Occupational Health and Safety Act 2004* and implement a system for health and safety management. Film Victoria has compiled a free online resource for the screen industry in Victoria which you can access at www.ohs.film.gov.au

The location manager and/or production contact acknowledges that it conducts filming entirely at its own risk and hereby releases to the fullest extent permitted by the law, Council and its servants, agents and contractors, in the absence of any wilful default on their part, from all claims of every kind resulting from any accident, death or injury occurring at the location to any person or property.

Council acknowledgment

The Council at its discretion, would appreciate acknowledgement in the end credits of your production, or as mutually agreed.

This acknowledgment should read "Filmed in South Gippsland Shire" or "Thanks to South Gippsland Shire Council".



Traditional Land Owners Acknowledgement

If filming activity is to occur on land that has Traditional Custodianship they may require acknowledgement in the end credits of your production, or as mutually agreed. If this has been identified the Film Liaison Officer will discuss this further with the location manager and/or production contact.

“”..” respectfully acknowledges the Traditional Custodians of the land, Elders past and present, their Spirits and Ancestors”.

Useful contacts

South Gippsland Shire
Strategic Planning and Development Department
Economic Development Tourism Unit
03 5662 9277
filmenquiries@southgippsland.vic.gov.au
www.southgippsland.vic.gov.au

Film Victoria
03 9660 3200
contact@film.vic.gov.au
www.film.vic.gov.au

Screen Australia
03 8682 1900
www.screenaustralia.gov.au

VicRoads
03 9093 1486
vicroadsfilming@roads.vic.gov.au
www.vicroads.vic.gov.au

Victoria Police Film and Television Office
03 9247 5599
film.tv@police.vic.gov.au
www.police.vic.gov.au

Parks Victoria
13 19 63 or 03 8627 4699
www.parkswebvic.gov.au

Department of Environment, Land, Water and Planning
13 61 86
www.delwp.vic.gov.au

V/Line
03 9619 5901
www.vline.com.au

Victorian Taxi Association
03 9676 2635
www.victaxi.com.au

SECTION 5: GLOSSARY

Bump in refers to the process of setting up a location before filming commences. This may include setting up infrastructure, equipment and camera positions, props and scenery.

Bump out refers to the process of packing up a location after filming has been completed. This may include breaking down infrastructure, equipment, props and scenery.

Camera Mounts/Rigs refers to a camera or another piece of equipment which is safely and securely attached internally or externally to a vehicle.

Certificate of Currency is documentary evidence that an insurance contract is issued by an insurer, outlining the insurance policy details, including the level of insurance held, dates of policy and the interested parties.

Director is the person responsible for overseeing the creative aspects of a film, including controlling the content and flow of the film's plot, directing the performances of actors, selecting the locations in which the film will be shot, and managing technical details such as the positioning of cameras, the use of lighting, and the timing and content of the film's soundtrack.

Essential Vehicles are vehicles that are required to be positioned as close to the filming location as possible and generally include camera truck, grips truck, electrics truck, standby props truck, sound van, generator van, safety and nurse vehicles.

Establishing Shots are images taken of the outside of a building or other structure to show where another scene is set. These are usually quick to film and have low-impact requirements, with minimal crew or equipment.

Filming in this handbook refers to the recording of images, including but not limited to film, video, digital or electronically for the purpose of exhibition and/or broadcast (television, cinema, internet, etc). Generally, it includes photography and photo shoots.

Film-maker/Film Applicant is the person/company responsible for the overall management of the filming activity and is the key contact for Film Liaison Officer.

Film Liaison Officer is the single point of contact at Council responsible for managing film permit applications.

Film Permit is the document that the filming applicant is issued upon successful submission and review of all filming activity plans and documentation. The film permit authorises the applicant to film in accordance with the terms and conditions outlined in the permit. This ensures that it is conducted in accordance with the safety and amenity regulations of a public agency.

Filming Schedule/Running Sheet is a comprehensive list, which details the timing, sequence and location of filming activity in chronological order so that the filmmaker, Film Liaison Officer and other stakeholders know what is happening and when. A good running sheet includes a timeline of the filming activity, bump in and out details and scenes being filmed.

Hazard is anything that has the potential to cause damage to life, health or property and applies to substances, work methods or machines or any other factors in the work environment.

Hold and release is a temporary road closure where traffic is prevented by an accredited traffic management person, from travelling on a road where filming is taking place.

Key Crew refers to the most important people in the crew with authority to make decisions.

Location is the area of production, whether it relates to parking, traffic control, crew facilities, the filming set or unit base site.

Location Manager is the person responsible for finding and securing locations to be used for the production and managing the logistics, permits and costs involved. They are the face of the production to the community. On large-scale productions, the head of the location teams may be referred to as the supervising location manager.

Location Scout is the person responsible for the initial scouting of locations for the production, taking into account production logistics such as location fees and budgetary restrictions, local permitting costs and regulations, camera and ling requirements, convenience to other locations, production services, crew and unit parking.

Location Survey/Recce refers to a pre-filming visit to a location to work out its suitability for filming, including access to necessary facilities and assessment of any potential lighting or sound issues. This is usually undertaken by a location manager or location scout.

Low Loader is a specialist filming vehicle used to safely transport a vehicle containing talent while moving on open roads.

Make Good means to recompense or repair damage. In terms of filming 'making good' refers to the agreement that a production company will, 'make good' a location upon completion and that it is returned to the same condition it was in prior to filming. This will include repairing any damage that may have occurred during the course of filming.

Mobile Production Office is sometimes part of large scale productions and is used by crew to work on the details of logistics and running sheets for upcoming filming.

On-Set Location Manager assists the location manager and is on set before, during, and after the filming process. General responsibilities include arriving first at the location to allow the set dressers onto the set, maintaining the cleanliness of the location areas during filming and liaising with residents and other stakeholders on the day.

Pre-Production is the planning stage of a film's production cycle, once the project has been financed but before actual filming begins. This can include script editing, budgeting, set design, location scouting and casting.

Producer has ultimate responsibility for the entire production and controls matters such as raising finance, hiring the writer, director and other key personnel, along with all the business associates. The producer is involved throughout the production from development, to completion of filming and post production through until the project is released theatrically or broadcast on television.

Line Producer/Production Manager supervises the physical aspects of the production including personnel, equipment, budget, and scheduling. It is their production manager's responsibility to make sure the filming stays on schedule and within its budget. The production manager often works under the supervision of a line producer and directly

supervises the production coordinator. It is not unusual for the production to have both or just one of these roles.

Production is the general process of putting a film together from pre-production through to its completion and delivery. It also refers to the middle stage of the process (preceded by pre-production and followed by post-production). The production stage is when principal photography occurs (the actual filming).

Production Designer is responsible for creating the physical, visual appearance of the film - settings, costumes, props, character makeup.

Post Production is the final stage in a film's production once principal photography concludes. This stage typically includes picture editing, sound editing, visual effects, musical scoring, sound mixing and dubbing.

Public Agency means a committee of management, council, Court Services Victoria, a Department Head, Minister, public entity, the Secretary of the Department of Environment and Primary Industries, a trust established by legislation to manage Crown land or the Victorian Racing Club Limited

Public Land means Crown land or land owned by or vested in a public agency.

Risk depends on such factors as the nature of the hazard, the degree of exposure, the potential consequences and individual characteristics such as susceptibility to hazardous substances.

Risk Assessment means the process of evaluating the probability and consequences of injury or illness arising from exposure to an identified hazard and for the purposes of this document includes hazard identification and risk control initiatives.

Rigging Shots includes setting, hanging or attaching any additional features, equipment or scaffolding to a vehicle in order to capture a particular camera position.


Road closure is the complete blockage of a road for a set period of time. Road closures require detours to be organised and do not occur on major roads unless suitable precautions have been taken. 'Partial' or single lane closures are often used to avoid complete road closures.

Rolling road blocks is a technique is used on a road when it is not suitable to stop traffic completely (eg. on a freeway), and enables traffic to move safely at a controlled speed, but to not get in the way of filming during a shot.

Safety Supervisor works with the producer to oversee the safety of the cast and crew and any other individual who may come in contact with the film crew or filming activities. They also ensure the implementation of recommendations contained in the production safety report and/or safety plan.

Site Plan (Mud Map) is a snapshot of the location, which identifies all aspects of the filming activity including equipment, infrastructure, camera position/s, pedestrian and or traffic control, generators, amenities, etc. The site plan should also reference streets, laneways and other distinguishable landmarks.

Specialist Filming Vehicles includes tracking, low loader vehicles or vehicles with camera mounts and/or rigging shots that require a special registration from VicRoads to be allowed to drive on open roads.



Stakeholders refer to a person, resident, business or group with an interest in any happenings taking place in the vicinity of where their residence or business is situated.

Tracking Vehicle is a specialist filming vehicle designed specifically for film crew to be transported safely while filming a moving vehicle on open roads. Tracking Vehicles can also have rigs and cranes attached to them.

Unit Base is the term used when referring to the hub of a film production while filming on location. The unit base will generally consist of unit truck/van, makeup/ wardrobe/greenroom buses, catering truck and runner vehicles. This is where the cast and crew gather for meals and the onset production office is managed.

Vox pop is an interview with members of the general public. It is an abbreviation of the Latin phrase *vox populi* which means ‘voice of the people’.

SECTION 6: APPENDICES

In this section, you will find examples of:

1. Filming Schedule / Running Sheet
2. Contact list
3. Infrastructure, Equipment and Major Props List
4. Site Plan
5. Unit Base/Essential Vehicles Mud Map
6. Risk Management Checklist
7. Risk Management Plan
8. Sample Stakeholder Notification Letter
9. Filmmakers Checklist

1. Example Filming Schedule / Running Sheet

Filming Schedule / Running Sheet sets the timing, sequence and location of your filming activity in chronological order so that film companies, Economic Development and Tourism Unit and other stakeholders know what is happening and when. A useful running sheet includes a timeline of the filming activity bump in, scenes being filmed and bump out details.

Scene refers to scene number marked within the script.

Internal/External refers to whether the filming is taking place in an Interior location or exterior location.

Scheduled Time refers to the times that certain scenes will be filmed and always refers to the 24 hour clock.

Scene/Location refers to the scene location according to the script.

Actual Location refers to the actual location within the South Gippsland Shire where the scene is being filmed.

Action refers to what will be happening in the scene being filmed.

FILMING SCHEDULE					
Filming Activity:					
Date:					
Time:					
Scene	Internal/External	Scheduled Time	Scene Location	Actual Location	Action
	0700 – 0730			Grey Street	Bump In
13/34	External	0730 – 1030	Exterior Hospital	Grey Street	Exterior dialogue scene where character is leaving hospital and bumps into friend. Conversation takes place.
12/36	External	1030 - 1430	Exterior Hospital	Grey Street	Exterior cut away of characters going their separate ways
12/37	Internal	1430 - 2000	Hospital	Mercy Hospital	Internal dialogue scene set in hospital room with patient in bed.
		2000 - 2030			Bump Out

2. Example Contact List

Contact List outlining key contacts for the filming activity.

Please note a contact list should include the full name of the person, their position and their contact number for on the day of filming.

CONTACT LIST			
Filming Activity:			
Date:			
Time:			
Name	Title/Position	Mobile	Bus Phone
	Producer		
	Location Manager		
	On Set Location Manager		
	Traffic Management Officer		
	Safety Officer		
	Victoria Police Personnel		

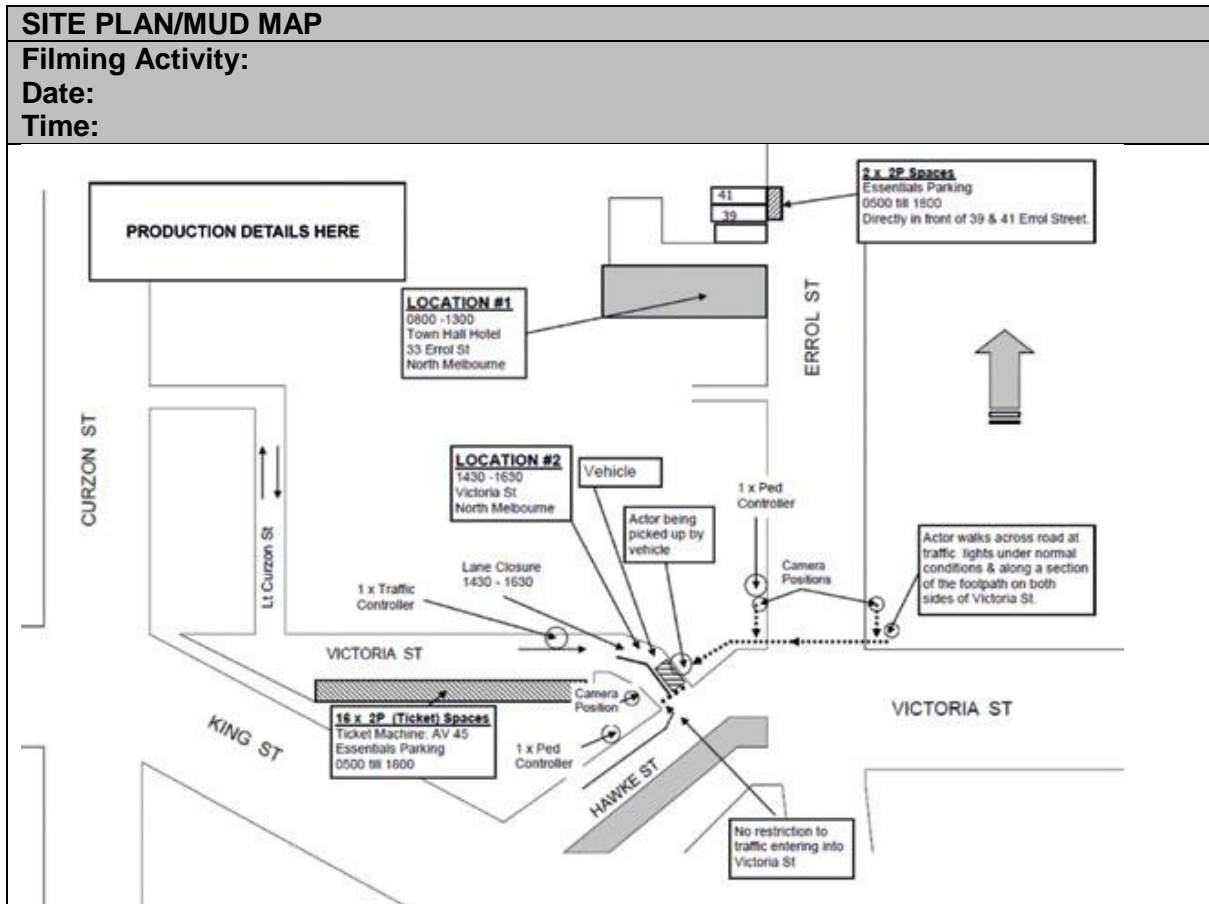
3. Example Infrastructure, Equipment and Major Props List

Infrastructure, equipment and major props list should detail all infrastructure, equipment and major props on location which will then be detailed in the film permit. Anything not listed is not approved and, if used, will mean a breach of permit conditions.

INFRASTRUCTURE, EQUIPMENT AND MAJOR PROPS LIST	
Filming Activity:	
Date:	
Time:	
Department	Equipment
Camera	Camera, lens, tripods, trolleys
Sound	Boom, Microphones, Sound cart
Lighting	Light, cables
Grips	Dolly, tracks, stands, rigging equipment
Generator	Generator, cables
Unit	Tea/coffee cart, chairs, rubbish bins, pop up tent
Art	List all major props – couch, light, etc.
Safety	Cable mats, witches hats, safety mat, signs
Vehicles	3x trucks, 2x cars, 1x mock-up police car
Other	

4. Example Site Plan / Mud Map

A **Site Plan**, commonly referred to by the industry as a **Mud Map**, identifies the location and all aspects of the filming activity, including equipment, infrastructure, major props, camera position/s, pedestrian and/or traffic control/movement, generators, amenities, etc.



5. Example Unit Base/Essential Vehicles Mud Map

A **Unit Base/Essential Vehicles Mud Map** clearly identifies where the essential vehicles and unit base will be located. In the below example it shows where the essential vehicles will be located and what they are.

UNIT BASE/ESSENTIAL VEHICLES MUD MAP	
Filming Activity: Date: Time:	
	Details UNIT BASE (all day) 19 x 1P spaces north side Harcourt St, Nth Melb between Flemington Rd and Courtney St from 0500 till 2000 Friday 3 October 2014. (Note: school holiday period) ESSENTIALS Loc #1 and #2 16 x 2P Spaces south side Victoria St, Nth Melb between Hawke St and Lt Curzon St from 0500 till 1800 Friday 3 October 2014 (ticket machine AV 45). 2 x 1P Spaces west side Errol St, Nth Melbourne between Errol Pl and Queensberry St directly in front of Shops no: 39 and 41, from 0500 till 1800, Friday 3 October 2014. ESSENTIALS Loc #3 15 x 3P Spaces south side Dudley St, West Melb between King St and Peel St from 0500 till 1900 Friday 3 October 2014 (ticket machine MWT 467).

6. Example Risk Management Checklist

A **Risk Management Checklist** is used to identify and manage risks associated with the filming activity. Please use the below example as a guide only, as each production will have its own unique requirements.

RISK MANAGEMENT CHECKLIST					
Filming Activity:					
Date:					
Time:					
#	Risk description	OK	Not OK	N/A	Details
1	Barriers in place – safety fences				
2	Catering checklists				
3	Confined spaces				
4	Disabled access and facilities				
5	Drinking water				
6	Electrics – i.e. lighting, stands				
7	Elevated work platforms – i.e. scissor lift				
8	Emergency access				
9	Emergency exits unlocked/ clear				
10	Emergency services briefed				
11	Exit signage				
12	Extension leads, cables, plugs				
13	Flammable storage				
14	Fire Brigade briefed				
15	Firearms, replicas and weapons				
16	Fire extinguishers in position				
17	Gas bottles secured				
18	Hot surfaces out of public reach				
19	Housekeeping				
20	Ladders				
21	Manual handling				
22	Participants/ marshals briefed				
23	Noise				
24	Pedestrian access				
25	Performers trained				
26	Powered and non-powered lifting devices – i.e. crane				
27	Police briefed				
28	Radio (2 way) function				
29	Roads and walkway condition				
3	Safety officers				
31	Scaffolding – i.e. sets				
32	Sharp and protruding objects				

33	Steps and handrails condition				
34	Special effects – i.e. smoke machines, explosions				
35	Specialist filming vehicles				
36	Special rigs				
37	Sufficient number of toilets				
38	Tents/marquees secured				
39	Toilets functioning				
40	Trees and branches				
41	Tripping hazards – i.e. electrical cords, cables, ropes				
42	Umbrellas secured				
43	Vehicles removed from site				
44	Wardens				
45	Warning signage				
46	Weather and wind conditions				
47	Work involving heights				
Safety concerns transferred to sign off sheet and handed to site safety officer					
Inspected by _____		Date _____			

7. Example Risk Management Plan

A **Risk Management Plan** is used to identify and manage risks associated with filming. From your risk management checklist you will be able to determine the level of risk and what measures have been put in place to mitigate that risk arising from possible incidents from happening.

1. Identify all foreseeable risks (as per risk management checklist).
2. Describe their physical consequence should risk occur (i.e. injury, financial loss).
3. Review current strategies (controls) for eliminating this risk. Current strategies are what is currently in place in your work strategies to mitigate certain risks.
4. Assess the risk (likelihood, consequence and rating).
5. Accept or reject risk Accept (A) if satisfied with the current control to manage risk. Reject (R) if you would like to implement further controls to better manage risk.
6. If rejected, assess further controls.
7. Re-assess the risk based on new control measures (likelihood, consequence and rating).
8. Assign strategies to relevant and appropriate persons.

Use the following risk matrix to identify and rate any foreseeable risks, then complete the risk management.

Likelihood	Consequences				
	Insignificant	Minor	Moderate	Major	Catastrophic
	1	2	3	4	5
A (almost certain)	H	H	E	E	E
B (likely)	M	H	H	E	E
C (moderate)	L	M	H	E	E
D (unlikely)	L	L	M	H	E
E (rare)	L	L	M	H	H
Legend					
E	EXTREME RISK: immediate action required				
H	HIGH RISK: senior management attention needed				
M	MODERATE RISK: management responsibility must be specified				
L	LOW RISK: manage by routine procedures				

Below is an example of how two risks identified in the risk management checklist have been rated and what controls are in place to stop any potential incident. This needs to be done for all identified risks.

RISK MANAGEMENT PLAN						
Filming Activity:						
Date:						
Time:						
Location						
Organiser responsible						
#	Risk	Consequence	Current Controls	Risk rating	Accept/Reject	Person Responsible
23	Noise	Unpleasant surroundings causing aggravation to cast, crew and stakeholders.	First AD to prevent excessive and unpleasant noise levels.	D2 L	A	First AD
41	Tripping hazards – i.e. electrical cords, cables, ropes	Bodily injury to public or cast/crew.	All cables covered or taped down. Barriers used to fence off area from public.	C2 M	A	Safety Officer

8. Example Sample Stakeholder Notification Letter

A **Stakeholder Notification Letter** is used to inform stakeholders (businesses, residents, public transport authorities, etc.) in the vicinity of where your filming activity is taking place about what you are doing and where. The purpose is to minimise any impact and allow stakeholders to make contact if they have any questions or need arrangements to be made for access.

PRODUCTION COMPANY NAME/LETTER HEAD

DATE

RE: NOTIFICATION OF FILMING

Dear Resident/Tenant,

This letter is to inform you that (INSERT PRODUCTION COMPANY) will be filming scenes for a (TELEVISION COMMERCIAL / TELEVISION SERIES / FEATURE FILM / STUDENT FILM) at locations in this area. Please see details below.

FILMING DETAILS

DAY / DATE

START TIME to FINISH TIME

INSERT BRIEF DESCRIPTION OF FILMING

LIST STREETS/PARK/LOCATIONS AFFECTED and HOW THEY WILL BE AFFECTED

To facilitate the filming, the production has obtained permission from the South Gippsland Shire to park some equipment vehicles on the following streets:

LIST BLOCKS WHERE PARKING IS BEING HELD

This will mean a reduction in the available parking between DAY/TIME to DAY/TIME in the area.

We appreciate the support of the public in our use of locations in and around South Gippsland Shire Council (Council) and will make every effort to minimise our impact on your neighbourhood. Noise will be kept to a minimum at all times.

An application for a film permit has been lodged with the South Gippsland Shire and we will conduct our activities in accordance with the rules and regulations of the Council.

We thank you in advance for your understanding and cooperation on this matter.

Should you have any queries or require more information please don't hesitate to contact our onsite location manager/production manager, NAME, MOBILE NUMBER or the Council Film Liaison Officer on 5662 9200.

Kind Regards,

LOCATION DEPARTMENT

PHONE NUMBER

ADDRESS

FAX NUMBER

EMAIL

9. Filmmakers Checklist

The following is a best practice guide for filmmakers to use to ensure that they have all the correct documentation for their film permit application.

FILMMAKERS CHECKLIST
Film Details Overview
<ul style="list-style-type: none"><input type="checkbox"/> Filming activity title/production name<input type="checkbox"/> Filming activity date and times (includes bump in/bump out)<input type="checkbox"/> Filming activity location/s<input type="checkbox"/> Filming activity organiser's details<input type="checkbox"/> Filming activity description<input type="checkbox"/> Number of crew/cast
Film Documents Required
<ul style="list-style-type: none"><input type="checkbox"/> Public Liability Insurance<input type="checkbox"/> Running Schedule<input type="checkbox"/> Number of crew/cast<input type="checkbox"/> Infrastructure, Equipment and props list<input type="checkbox"/> Site Plan/Mud Map<input type="checkbox"/> Pedestrian Management Plan (where applicable)<input type="checkbox"/> Traffic Management Plan (where applicable)<input type="checkbox"/> Risk Management Plan<input type="checkbox"/> Communication Plan / Stakeholder Notification Letter<input type="checkbox"/> Parking (where applicable)<input type="checkbox"/> Unit Base and Essential Vehicles Mud Map<input type="checkbox"/> Waste Management Plan<input type="checkbox"/> Health Services – Catering approval<input type="checkbox"/> Film Permit



PAGE INTENTIONALL LEFT BLANK



Acknowledgements

Council and Film Victoria would like to thank everyone involved in the development and production of this handbook.

With special thanks to the hard-working members of the Film Victoria Film Friendly Working Group which included Victoria Police Film and Television Office, VicRoads, Department of Environment Land, Water and Planning, Melbourne Cricket Club Trust, Department of State Development Business and Innovation, Parks Victoria, Bayside City Council, Hobsons Bay City Council, City of Melbourne and Drew Rhodes and James Legge as representatives of the screen industry.



South Gippsland Shire Council • 9 Smith Street (Private Bag 4) • Leongatha • Vic • 3953
W: <http://www.southgippsland.vic.gov.au>





FILM POLICY

Policy Number	CE28	Directorate	Development Services
ELT Approval Date		Department	Strategic Planning and Development
Council Adoption Date	May 2015	Primary Author	Ken Fraser
Revision Date	March 2020	Secondary Author	Anna Anthony

POLICY OBJECTIVE

This policy seeks to:

- Promote film and television production in South Gippsland Shire (Shire), build the image of the area and maximise associated economic benefits.
- Provides a framework to manage film and television projects in a safe and coordinated manner through a filming permit application process to ensure these outcomes.
- To ensure Council's compliance with new Victorian Government legislation.

LEGISLATIVE PROVISIONS

Filming Approval Act (2014)
Local Government Act (1989)
Road Management Act (2004)
Occupational Health and Safety Act (2004)
(Hazardous Substances) Regulations (1999)
Use of Council Logo Policy (Oct 2012)

POLICY STATEMENT

This policy seeks to increase the Shire's profile as a desirable film and television production destination. To advocate and facilitate filming activity in the region, and to generate greater economic benefits for the Shire by being flexible, prompt, positive, consistent and transparent whilst maintaining community amenities, ensuring public safety, preserving the environment and heritage assets.

POLICY BACKGROUND

Interest in Victoria as a location for production and post-production of films, television programs and commercials has increased in recent years. South Gippsland Shire Council (Council) recognises the need for a coordinated approach across local government to address the demand from the production industry and has committed to promoting and facilitating greater access to its locations.

Film and television production can generate revenue for hospitality, accommodation and other local industries. A secondary benefit of these projects is the promotion to the region and stimulation to tourism and investment.



The film and television industry provides a significant economic contribution to the State of Victoria and the Gippsland Region. Council wants to ensure all commercial and amateur film producers have a 'film friendly' experience. Council has a strong working relationship with Film Victoria and other Gippsland Councils to promote this activity.

The Filming and Approval Act (2014) came into effect in August 2014. The Victorian Government has produced Film Friendly Guidelines that Victorian public agencies, including Council, must comply with when considering film permit applications. This Policy is based on these guidelines.

COUNCIL'S ROLE

Council will:

- Promote South Gippsland as a location for film and television production.
- Provide a central contact person for all Council film enquiries, known as the Film Liaison Officer.
- Assess and issue Film Permit Applications.
- Liaise with relevant departments to expedite permit applications where possible.
- Assist in sourcing locations to match script specifications.
- Respond to all enquiries in a timely, flexible, positive manner relating to film and television production.
- Provide contact information for, but not limited to:
 - Council Services and Statutory requirements
 - Emergency services
 - Road closures and traffic management
 - Signage
 - Waste management
 - Business and support services
 - Local community groups and organisations
 - Local media
- Make available film permit application information on our website <http://www.southgippsland.vic.gov.au/> and provide a dedicated email address filmenquiries@southgippsland.vic.gov.au
- Comply with Film Friendly Guidelines as part of the Filming Approval Act (2014) when considering permit applications.

PERMIT PROCESS

Production companies/producers seeking to undertake a film or television production will submit a Film Permit Application Form with any other documentation required by Council.

Linked to this policy are three related documents. These are:

1. South Gippsland Shire Film Application Quick Guide.
2. Film Permit Application Form.
3. A Guide to Filming in South Gippsland Shire.



FEES

To encourage film projects Council will not charge a fee for the issuing of a 'Film Permit'.

Council may negotiate a fee for filming activity to recover costs where Council assets are used or where significant event coordination and officer time is required. These fees will be reasonable and transparent.

All expenses associated with advertising, traffic control, road closures and any other costs incurred in the facilitation of the application i.e. building/planning permits, will be borne by the applicant.

A bond may be required to offset any potential damage to public amenities.

Council has the right to waive or vary fees in certain circumstances.

SUPPORT FOR COMMUNITY FILM PROJECTS

This policy also seeks to encourage the development of Community Film and Television projects. These include: student projects, charitable activities or activities that relate to the cultural heritage of the South Gippsland Shire. In these instances Council may consider relaxing the provisions on the Guide to Filming in South Gippsland where they may be an impediment to these efforts and where public safety is maintained.

RISK ASSESSMENT

By having a Film Policy and guidelines Council mitigates the risks to the public and community. It sets standards for film makers so that they provide the necessary public safety, traffic management, pedestrian management and insurance cover to undertake their work in a safe and coordinated manner.

It ensures compliance of Council with Victorian Government legislation.

There could be a risk to the following with no Film Policy or Filming guidelines:

- Public Amenity;
- Safety and security;
- Environment and heritage risks;
- Fraudulent, corrupt activity or conflicts of interest;
- Non-compliance with State Government legislation; and
- South Gippsland Shire Council operational requirements.

IMPLEMENTATION STATEMENT

The Film Policy, A Guide to Filming in South Gippsland and the Film Permit Application provides a framework to review and process applications for filming and television production in South Gippsland Shire. These allow stakeholders to



understand precisely their responsibilities and expectations when filming in the South Gippsland Shire.

The implementation of the policy will be managed by the Economic Development and Tourism Unit.

Information regarding Policy, Guidelines and Application ,once adopted by Council will be endorsed and communicated to staff via email and will be available on the Council website.

Film Permit Application Form



South Gippsland
Shire Council

Production Company Details

Production Company:	<input type="text"/>	ABN:	<input type="text"/>
Address:	<input type="text"/>	Phone:	<input type="text"/>
	<input type="text"/>	Fax:	<input type="text"/>
Email:	<input type="text"/>		
Production Manager:	<input type="text"/>	Phone:	<input type="text"/>
Location Manager:	<input type="text"/>	Phone:	<input type="text"/>
On site Contact:	<input type="text"/>	Phone:	<input type="text"/>

Billing Information (If required)

Billing Contact:	<input type="text"/>	ABN:	<input type="text"/>
Address:	<input type="text"/>	Phone:	<input type="text"/>
	<input type="text"/>		

Production Information

Project Name:	<input type="text"/>		
Type of Production:	<input type="text"/>		
Proposed Filming date/s:	<input type="text"/>		
Start:	<input type="text"/>	End:	<input type="text"/>
Filming Times:	<input type="text"/>		
(Include bump-in bump-out times)			

Location Information

Filming Location:	<input type="text"/>
(If more than one attach list)	
Brief Summary:	<input type="text"/>
(of the scene and/or activities)	<input type="text"/>

Number of Cast
& Crew:

Number of
Essential
Parking
Spaces:

Number
of cars

Number
of trucks

Number of
oversized
vehicles

(over 7.5m long or over
4.5 tonnes)



Unit Base

Exact location of unit base:

(Including privately owned land)

Unit Base times: Start date: End date:

Number of parking spaces required at Unit Base:

Number of cars: Number of trucks:

Traffic Management and Pedestrian Management (If required)

If the film production will disrupt traffic or pedestrian flow, a Traffic Management Plan (TMP) or Pedestrian Management Plan (PMP) incorporating a Risk Management Plan will be required.

Type of activity:

(e.g. hold & release, road closure)

Name of traffic/ safety company supplying the TMP or PMP :

Company Name: Phone:

Email:

What times will the roads be affected: Start of closure:

End of closure:

Names of the roads affected:

Large Equipment, temporary structures or special conditions (If required)

Details of large equipment the production will bring to the location:

☐ Camera Cranes ☐ Scaffolding ☐ Lighting towers ☐ Scissor Lifts Other

Temporary Structures: (e.g. tents, marquees)

Number of temporary structures: Size: Please note: temporary structures need to be secured by weights, not pegs or stakes.

Style:

Special conditions:

☐ Firearms/weapons (include imitation)* ☐ Amplified music or sound* ☐ Stunts*

☐ Other safety concerns ☐ May have environmental impact ☐ May cause offense or concern to the public

*Confirmation of approval from Victoria Police or other state government agencies is required with this application.

Special conditions detail of activity:

INDEMNIFICATION

The production company agrees to indemnify South Gippsland Shire Council against all claims or suits of any kind arising out of the negligence or unlawful conduct of the production company and its employees, agents or otherwise.

The production company agrees to comply with all the local laws of South Gippsland Shire Council and all other relevant legislation, Council conditions, guidelines and special conditions provided.

Signed for, and on behalf of the production company, who warrants that he/she is authorised to sign this application on behalf of the production.

The production company agrees to abide by the Victorian Screen Industry Code of Conduct*. Agree button

* To obtain a copy of the Victorian Screen Industry Code of Conduct click on the link [Code of Conduct](#).

By typing my name in the box below I confirm that I have read and understand all the statements and requirements of this application.

Name: Date:

Title:

Documents Submitted (please tick)

Copy of Certificate of Currency of Public Liability Insurance

Running Schedule

Site plan/ mud map of location, unit base and essential parking spaces

Traffic Management Plan, Pedestrian Management Plan, Road Activity Permit

Risk Management plans including safety reports

Planning Permit (Council)

Building Permit (Building Surveyor)

Parking Application (Council)

Location agreement (if applicable)

Approval# & Information on special conditions (e.g. Lighting, noise, firearms)

#approval from Victoria Police and government agencies

Infrastructure and props list

Additional locations, dates, times and filming details

Communication plan/ Stakeholder Notification letter

Waste Management Plan

Environmental Health approval (Catering) (Council)

Save

(Please save the form and submit the form with any accompanying documentation to: filmenquiries@southgippsland.vic.gov.au)