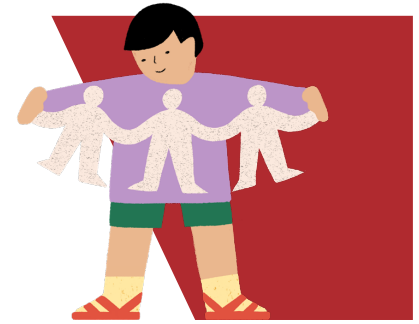


## FACT SHEET

# CAPACITY BUILDING STREAM OVERVIEW



Building Blocks is critical to support the roll out of funded Three-Year-Old Kindergarten across the state and to help meet the growing demand for Four-Year-Old Kindergarten.

Grants support local councils and early learning providers build, expand and improve kindergartens or make them more inclusive.

## Introducing building blocks

Building Blocks is a planning and funding program run by the Victorian Government to help deliver the early childhood infrastructure Victoria needs over this decade.

Building Blocks grants simplify and replace previous grant schemes - the Children's Facilities Capital Program and the Inclusive Kindergartens Facilities Program – used to upgrade our kindergarten services and make them more inclusive.

Those programs funded upgrades to buildings and playgrounds and invested in equipment that made a big difference to how Victorian kindergarten services meet the educational and social needs of children with disabilities.

Building Blocks grants will still achieve those goals, while being better equipped to create the extra kindergarten places we need for the future.

There are three grant streams – capacity building, improvement and inclusion.

Improvement grants provide funding for upgrades and minor expansions to early learning facilities, or investment in IT equipment.

Inclusion grants provide funding to upgrade facilities, or purchase equipment, to provide safe and inclusive environments for children of all needs and abilities.

## Capacity building stream

Funding is available for projects that create additional places for funded Three and Four-Year-Old Kindergarten by building new, or expanding existing infrastructure.

There are four grant categories available:

- Integrated Children's Centre Grant
- New Early Learning Facility Grant
- Modular Kindergarten Facility Grant
- Expansion Upgrades Grant



TABLE 1: OVERVIEW OF CAPACITY BUILDING STREAM GRANTS

Grant type	Maximum grant	Minimum requirements
<b>Integrated Children's Centre</b>	\$2 million (ex GST) For projects seeking a smaller increase to licenced places, the maximum grant allocation may be reduced.	<ul style="list-style-type: none"> <li>• At least 66 licensed places, based on two rooms for three and four-year-old children. This can be sessional or integrated</li> <li>• Long day care (unless evidence shows there is no projected local demand)</li> <li>• Maternal and child health services</li> <li>• Allied health services for early years</li> <li>• Family services</li> <li>• Flexible, multi-purpose spaces and services to meet local community needs, including one or more of the following: <ul style="list-style-type: none"> <li>– supported playgroups or community parent-led playgroups</li> <li>– parenting groups or programs</li> <li>– occasional care</li> <li>– family day care program coordination</li> <li>– counselling services</li> <li>– community meeting spaces</li> <li>– outside school hours care</li> <li>– adult education programs</li> </ul> </li> </ul>
<b>New Early Learning Facility</b>	\$1.5 million (ex GST) For projects seeking a smaller increase to licenced places, the maximum grant allocation may be reduced.	<ul style="list-style-type: none"> <li>• At least 66 licensed places, based on two rooms for three and four-year-old children (this can be sessional or integrated)</li> <li>• Must be a completely new building</li> <li>• Proposals may also support the delivery of other services, including long day care, maternal and child health services, or playgroups.</li> </ul>
<b>Modular Kindergarten Facility</b>	Up to \$750,000 (ex GST) for one room. Up to \$1.5 million (ex GST) for two rooms.	<ul style="list-style-type: none"> <li>• At least 33 licensed places, based on one room, or at least 66 places based on two rooms for three and four-year-old children. This can be sessional or integrated.</li> <li>• Proposals may also support the delivery of other services, including long day care, maternal and child health services, or playgroups.</li> </ul>
<b>Expansion Upgrades</b>	\$600,000 (ex GST) Projects seeking the maximum grant contribution should increase licenced capacity by 22 approved places.	<ul style="list-style-type: none"> <li>• An increase in the number of licenced places for a funded three and/or four-year-old kindergarten program.</li> <li>• Improve the quality of the learning environment at existing facilities.</li> <li>• Renovated and refurbished facilities must be used to deliver a funded three and four-year-old kindergarten program.</li> </ul>

The funding levels provided in the table are based on services containing two 33-place kindergarten rooms. Larger services may be eligible for additional state funding beyond the specified amounts. This will be considered on a case-by-case basis.

