

Planning Property Report

from www.planning.vic.gov.au on 25 August 2017 12:12 PM

Address: 80 PIT ROAD WOOREEN 3953

Crown Description: Allot. 95B PARISH OF ALLAMBEE

Local Government (Council): SOUTH GIPPSLAND **Council Property Number:** 173871

Directory Reference: VicRoads 97 B8

This property has a total of 2 parcels.

For full parcel details get the free Basic Property report at [Property Reports](#)

See next page for planning information

Copyright © - State Government of Victoria

Disclaimer: This content is provided for information purposes only. No claim is made as to the accuracy or authenticity of the content. The Victorian Government does not accept any liability to any person for the information provided.

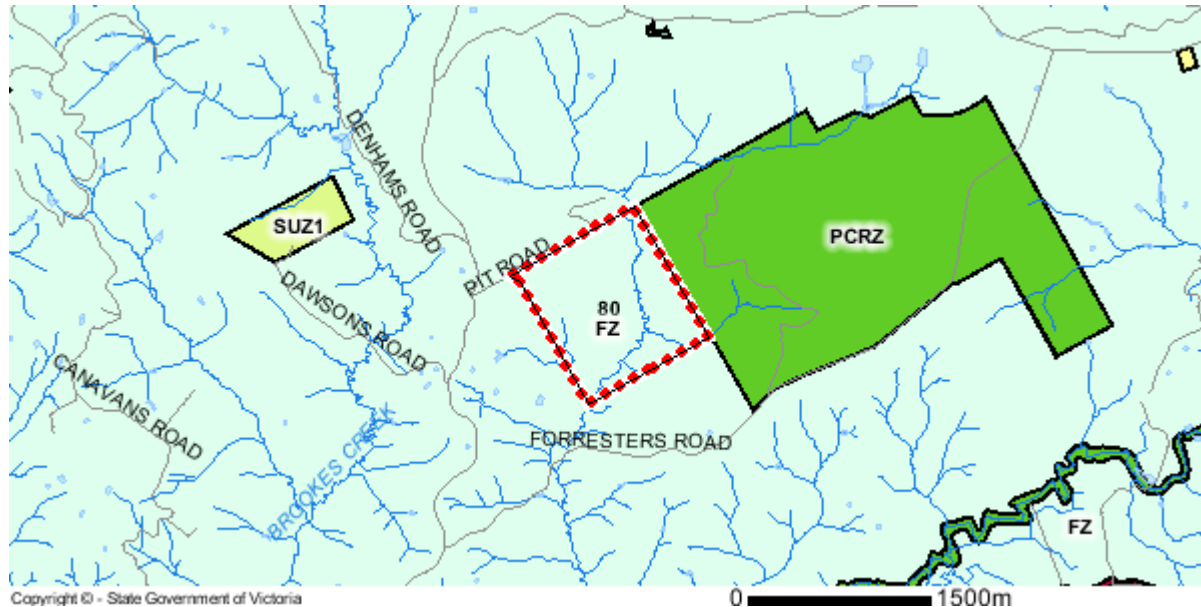
Read the full disclaimer at www.land.vic.gov.au/home/copyright-and-disclaimer

Ordinary Meeting of Council No. 416 - 27 September 2017

Planning Zone

FARMING ZONE (FZ)

SCHEDULE TO THE FARMING ZONE (FZ)



Note: labels for zones may appear outside the actual zone - please compare the labels with the legend.

Zones Legend

ACZ - Activity Centre	IN1Z - Industrial 1	R1Z - General Residential
B1Z - Commercial 1	IN2Z - Industrial 2	R2Z - General Residential
B2Z - Commercial 1	IN3Z - Industrial 3	R3Z - General Residential
B3Z - Commercial 2	LDRZ - Low Density Residential	RAZ - Rural Activity
B4Z - Commercial 2	MUZ - Mixed Use	RCZ - Rural Conservation
B5Z - Commercial 1	NRZ - Neighbourhood Residential	RDZ1 - Road - Category 1
C1Z - Commercial 1	PCRZ - Public Conservation & Resource	RDZ2 - Road - Category 2
C2Z - Commercial 2	PDZ - Priority Development	RGZ - Residential Growth
CA - Commonwealth Land	PPRZ - Public Park & Recreation	RLZ - Rural Living
CCZ - Capital City	PUZ1 - Public Use - Service & Utility	RUZ - Rural
CDZ - Comprehensive Development	PUZ2 - Public Use - Education	SUZ - Special Use
DZ - Dockland	PUZ3 - Public Use - Health Community	TZ - Township
ERZ - Environmental Rural	PUZ4 - Public Use - Transport	UFZ - Urban Floodway
FZ - Farming	PUZ5 - Public Use - Cemetery/Crematorium	UGZ - Urban Growth
GRZ - General Residential	PUZ6 - Public Use - Local Government	
GWAZ - Green Wedge A	PUZ7 - Public Use - Other Public Use	
GWZ - Green Wedge	PZ - Port	

- - - - - Urban Growth Boundary

++++++ Railway +---+---+ Tram ——— River, stream Lake, waterbody

Copyright © - State Government of Victoria

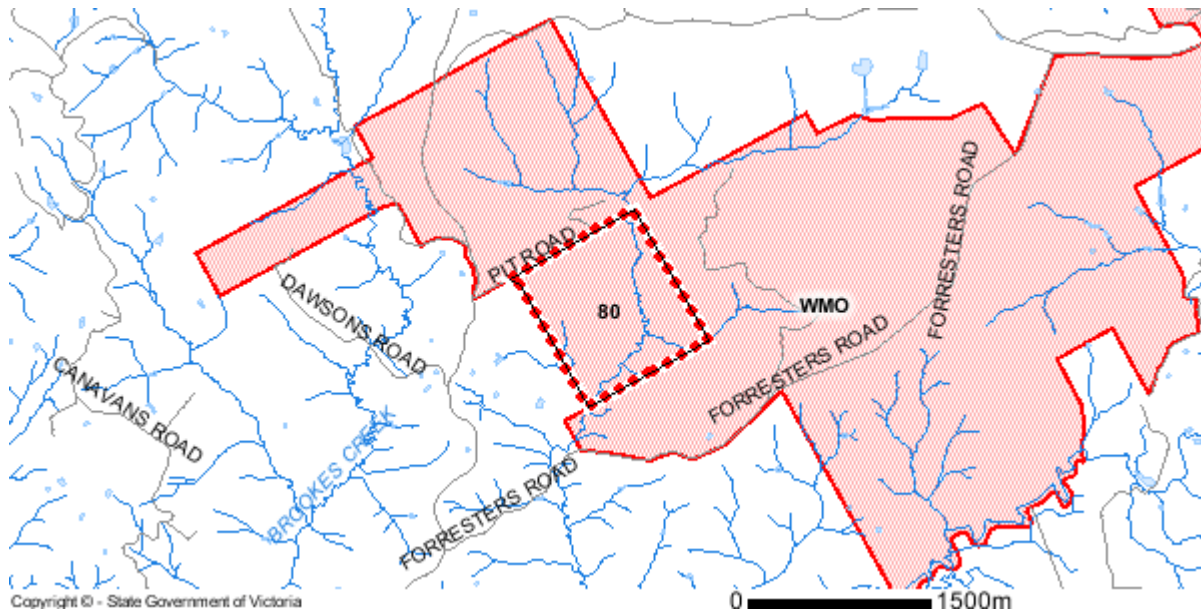
Disclaimer: This content is provided for information purposes only. No claim is made as to the accuracy or authenticity of the content. The Victorian Government does not accept any liability to any person for the information provided.

Read the full disclaimer at www.land.vic.gov.au/home/copyright-and-disclaimer

Ordinary Meeting of Council No. 416 - 27 September 2017

Planning Overlays

BUSHFIRE MANAGEMENT OVERLAY (BMO OR WMO)



ENVIRONMENTAL SIGNIFICANCE OVERLAY (ESO)

ENVIRONMENTAL SIGNIFICANCE OVERLAY - SCHEDULE 2 (ESO2)

ENVIRONMENTAL SIGNIFICANCE OVERLAY - SCHEDULE 5 (ESO5)



Copyright © - State Government of Victoria

Disclaimer: This content is provided for information purposes only. No claim is made as to the accuracy or authenticity of the content. The Victorian Government does not accept any liability to any person for the information provided.

Read the full disclaimer at www.land.vic.gov.au/home/copyright-and-disclaimer

Ordinary Meeting of Council No. 416 - 27 September 2017

80-PIT-ROAD-WOOREEN-PLANNING-PROPERTY-REPORT



Environment,
Land, Water
and Planning

Planning Overlays Legend

Overlays Legend

 AEO - Airport Environs	 LSIO - Land Subject to Inundation
 BMO - Bushfire Management (also WMO)	 MAEO1 - Melbourne Airport Environs 1
 CLPO - City Link Project	 MAEO2 - Melbourne Airport Environs 2
 DCPO - Development Contributions Plan	 NCO - Neighbourhood Character
 DDO - Design & Development	 PO - Parking
 DDOPT - Design & Development Part	 PAO - Public Acquisition
 DPO - Development Plan	 RO - Restructure
 EAO - Environmental Audit	 RCO - Road Closure
 EMO - Erosion Management	 SBO - Special Building
 ESO - Environmental Significance	 SLO - Significant Landscape
 FO - Floodway	 SMO - Salinity Management
 HO - Heritage	 SRD - State Resource
 IPO - Incorporated Plan	 VPD - Vegetation Protection
 Railway	 Tram
 River, stream	 Lake, waterbody

Note: due to overlaps some colours on the maps may not match those in the legend.

Areas of Aboriginal Cultural Heritage Sensitivity

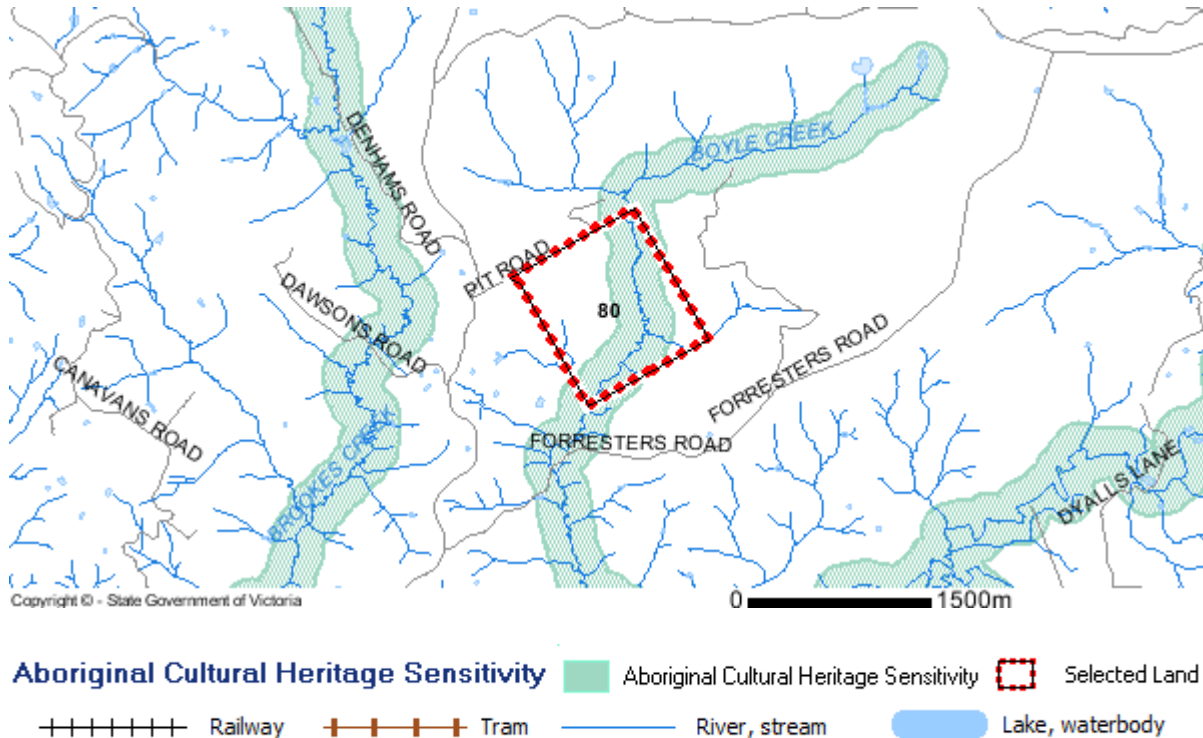
This property is within, or is affected by, one or more areas of cultural heritage sensitivity as described in the Aboriginal Heritage Regulations 2007.

The data provides indicative information about the location and extent of areas of Aboriginal cultural heritage sensitivity and is provided to assist with the decisions about the potential need to prepare a Cultural Heritage Management Plan in relation to proposed activities on this property.

For further information about whether a Cultural Heritage Management Plan is required go to [Aboriginal Heritage Planning Tool](#)

To find out if your property has any recorded Aboriginal cultural heritage places, such as scarred trees, occupation sites or places of burial, you can request information from the Victorian Aboriginal Heritage Register.

Find out more about the [Victorian Aboriginal Heritage Register](#)



Copyright © - State Government of Victoria

Disclaimer: This content is provided for information purposes only. No claim is made as to the accuracy or authenticity of the content. The Victorian Government does not accept any liability to any person for the information provided.

Read the full disclaimer at www.land.vic.gov.au/home/copyright-and-disclaimer

Ordinary Meeting of Council No. 416 - 27 September 2017

Further Planning Information

Planning scheme data last updated on 23 August 2017.

A **planning scheme** sets out policies and requirements for the use, development and protection of land. This report provides information about the zone and overlay provisions that apply to the selected land. Information about the State, local, particular and general provisions of the local planning scheme that may affect the use of this land can be obtained by contacting the local council or by visiting [Planning Schemes Online](#)

This report is NOT a **Planning Certificate** issued pursuant to Section 199 of the Planning & Environment Act 1987. It does not include information about exhibited planning scheme amendments, or zonings that may affect the land. To obtain a Planning Certificate go to [Titles and Property Certificates](#)

For details of surrounding properties, use this service to get the Reports for properties of interest

To view planning zones, overlay and heritage information in an interactive format visit [Planning Maps Online](#)

For other information about planning in Victoria visit www.planning.vic.gov.au

Planning Property Report

from www.planning.vic.gov.au on 25 August 2017 12:16 PM

Address: 870 LEONGATHA-YARRAGON ROAD WOOREEN 3953

Lot and Plan Number: Lot 1 PS329996

Local Government (Council): SOUTH GIPPSLAND **Council Property Number:** 202719

Directory Reference: VicRoads 97 B8

This property has a total of 5 parcels.

For full parcel details get the free Basic Property report at [Property Reports](#)

See next page for planning information

Copyright © - State Government of Victoria

Disclaimer: This content is provided for information purposes only. No claim is made as to the accuracy or authenticity of the content. The Victorian Government does not accept any liability to any person for the information provided.

Read the full disclaimer at www.land.vic.gov.au/home/copyright-and-disclaimer

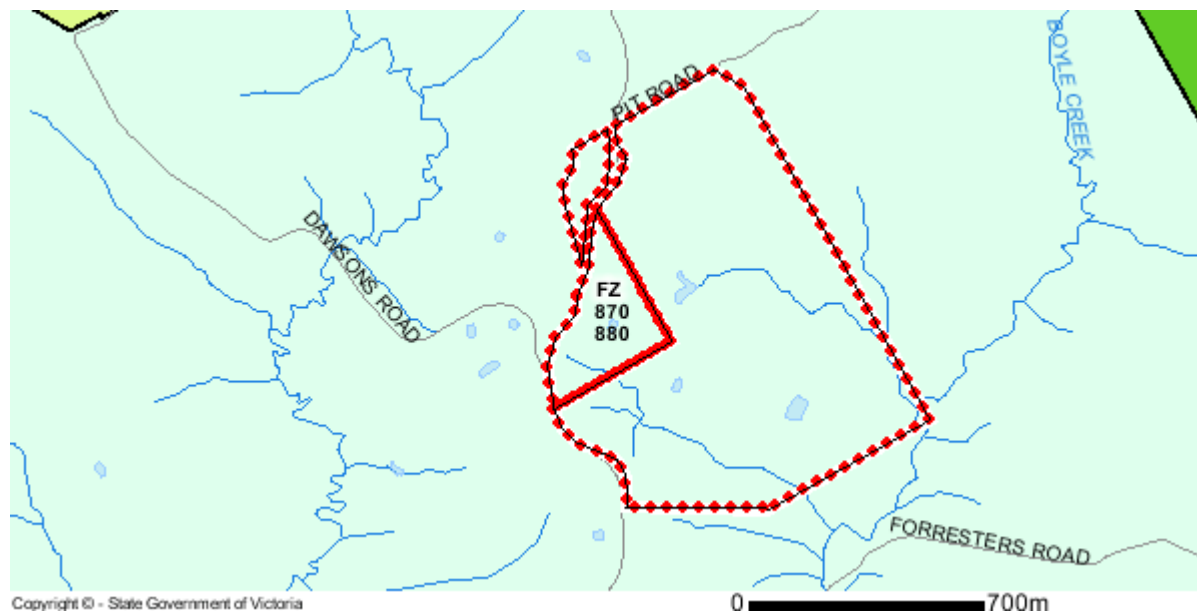
Ordinary Meeting of Council No. 416 - 27 September 2017

870-LEONGATHA-YARRAGON-ROAD-WOOREEN-PLANNING-PROPERTY-REPORT

Planning Zone

FARMING ZONE (FZ)

SCHEDULE TO THE FARMING ZONE (FZ)



Note: labels for zones may appear outside the actual zone - please compare the labels with the legend.

Zones Legend

ACZ - Activity Centre	IN1Z - Industrial 1	R1Z - General Residential
B1Z - Commercial 1	IN2Z - Industrial 2	R2Z - General Residential
B2Z - Commercial 1	IN3Z - Industrial 3	R3Z - General Residential
B3Z - Commercial 2	LDRZ - Low Density Residential	RAZ - Rural Activity
B4Z - Commercial 2	MUZ - Mixed Use	RCZ - Rural Conservation
B5Z - Commercial 1	NRZ - Neighbourhood Residential	RDZ1 - Road - Category 1
C1Z - Commercial 1	PCRZ - Public Conservation & Resource	RDZ2 - Road - Category 2
C2Z - Commercial 2	PDZ - Priority Development	RGZ - Residential Growth
CA - Commonwealth Land	PPRZ - Public Park & Recreation	RLZ - Rural Living
CCZ - Capital City	PUZ1 - Public Use - Service & Utility	RUZ - Rural
CDZ - Comprehensive Development	PUZ2 - Public Use - Education	SUZ - Special Use
DZ - Dockland	PUZ3 - Public Use - Health Community	TZ - Township
ERZ - Environmental Rural	PUZ4 - Public Use - Transport	UFZ - Urban Floodway
FZ - Farming	PUZ5 - Public Use - Cemetery/Crematorium	UGZ - Urban Growth
GRZ - General Residential	PUZ6 - Public Use - Local Government	
GWAZ - Green Wedge A	PUZ7 - Public Use - Other Public Use	
GWZ - Green Wedge	PZ - Port	

- - - - - Urban Growth Boundary
 + + + + + Railway + + + + + Tram ——— River, stream Lake, waterbody

Copyright © - State Government of Victoria

Disclaimer: This content is provided for information purposes only. No claim is made as to the accuracy or authenticity of the content. The Victorian Government does not accept any liability to any person for the information provided.

Read the full disclaimer at www.land.vic.gov.au/home/copyright-and-disclaimer

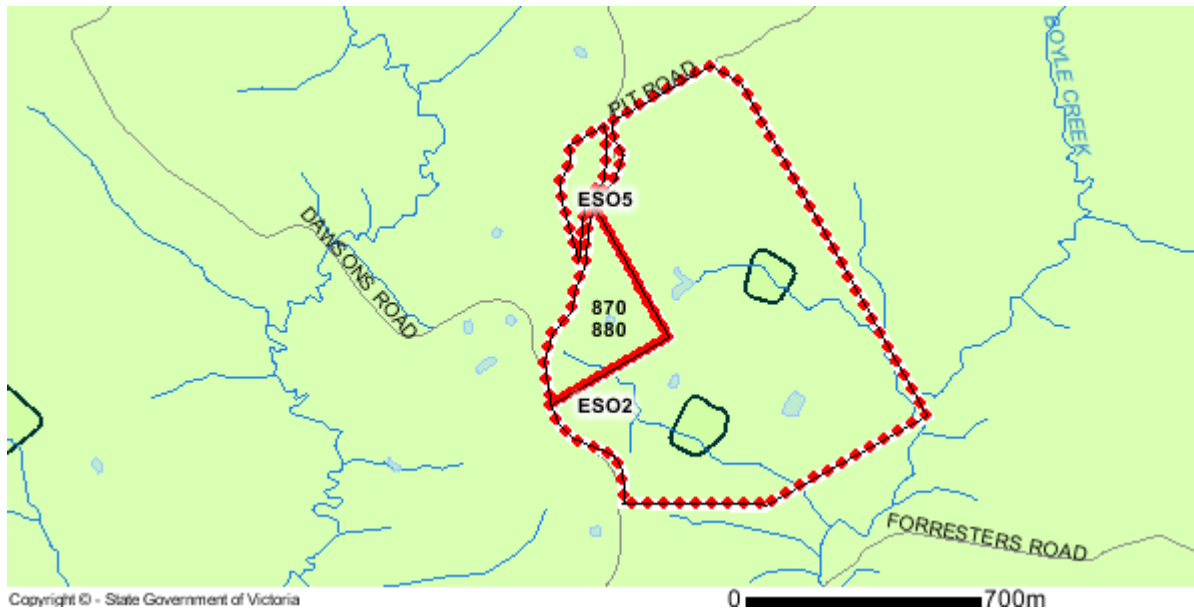
Ordinary Meeting of Council No. 416 - 27 September 2017

Planning Overlays

ENVIRONMENTAL SIGNIFICANCE OVERLAY (ESO)

ENVIRONMENTAL SIGNIFICANCE OVERLAY - SCHEDULE 2 (ESO2)

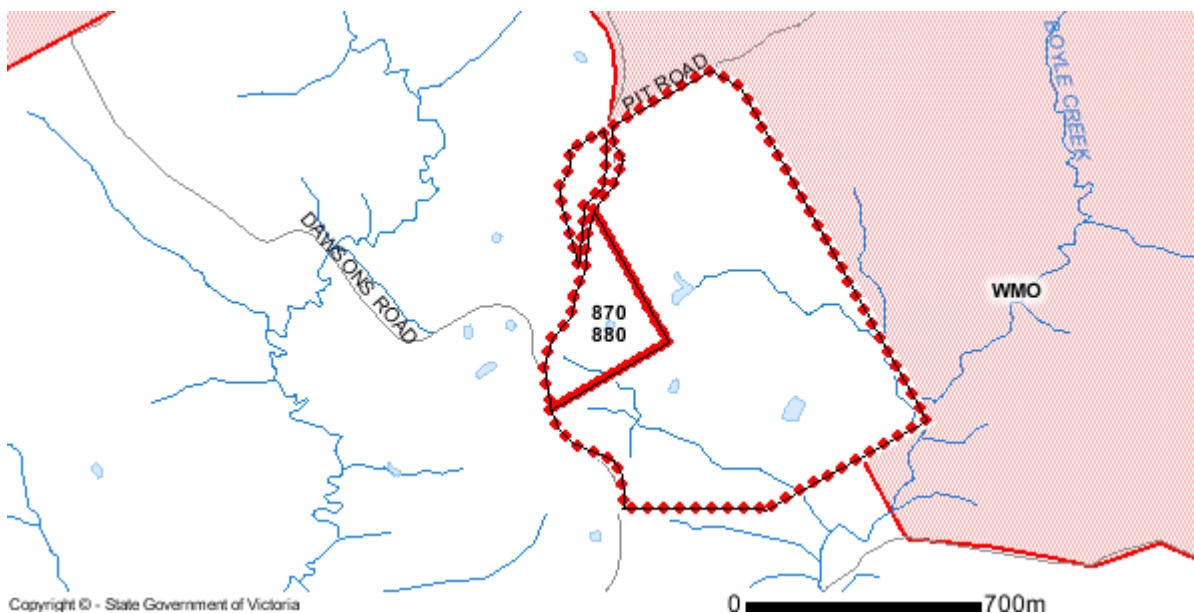
ENVIRONMENTAL SIGNIFICANCE OVERLAY - SCHEDULE 5 (ESO5)



OTHER OVERLAYS

Other overlays in the vicinity not directly affecting this land

BUSHFIRE MANAGEMENT OVERLAY (BMO OR WMO)



Copyright © - State Government of Victoria

Disclaimer: This content is provided for information purposes only. No claim is made as to the accuracy or authenticity of the content. The Victorian Government does not accept any liability to any person for the information provided.

Read the full disclaimer at www.land.vic.gov.au/home/copyright-and-disclaimer

Ordinary Meeting of Council No. 416 - 27 September 2017

870-LEONGATHA-YARRAGON-ROAD-WOOREEN-PLANNING-PROPERTY-REPORT

Planning Overlays Legend

Overlays Legend

 AEO - Airport Environs	 LSIO - Land Subject to Inundation
 BMO - Bushfire Management (also WMO)	 MAEO1 - Melbourne Airport Environs 1
 CLPO - City Link Project	 MAEO2 - Melbourne Airport Environs 2
 DCPO - Development Contributions Plan	 NCO - Neighbourhood Character
 DDO - Design & Development	 PD - Parking
 DDOPT - Design & Development Part	 PAO - Public Acquisition
 DPO - Development Plan	 RO - Restructure
 EAO - Environmental Audit	 RCO - Road Closure
 EMO - Erosion Management	 SBO - Special Building
 ESO - Environmental Significance	 SLO - Significant Landscape
 FO - Floodway	 SMO - Salinity Management
 HO - Heritage	 SRD - State Resource
 IPO - Incorporated Plan	 VPD - Vegetation Protection
 Railway	 Tram
 River, stream	 Lake, waterbody

Note: due to overlaps some colours on the maps may not match those in the legend.

Further Planning Information

Planning scheme data last updated on 23 August 2017.

A **planning scheme** sets out policies and requirements for the use, development and protection of land.

This report provides information about the zone and overlay provisions that apply to the selected land.

Information about the State, local, particular and general provisions of the local planning scheme that may affect the use of this land can be obtained by contacting the local council or by visiting [Planning Schemes Online](#)

This report is NOT a **Planning Certificate** issued pursuant to Section 199 of the Planning & Environment Act 1987.

It does not include information about exhibited planning scheme amendments, or zonings that may affect the land.

To obtain a Planning Certificate go to [Titles and Property Certificates](#)

For details of surrounding properties, use this service to get the Reports for properties of interest

To view planning zones, overlay and heritage information in an interactive format visit [Planning Maps Online](#)

For other information about planning in Victoria visit www.planning.vic.gov.au

Copyright © - State Government of Victoria

Disclaimer: This content is provided for information purposes only. No claim is made as to the accuracy or authenticity of the content. The Victorian Government does not accept any liability to any person for the information provided.

Read the full disclaimer at www.land.vic.gov.au/home/copyright-and-disclaimer

Ordinary Meeting of Council No. 416 - 27 September 2017