

11 JUL 2018

MOYNE
SHIRE

9 July 2018

Attention: Mayor and CEO

Dear Sir/Madam,

Moyne Shire Council submission – Wind Farm Transmission Lines

Moyne Shire Council writes to present you with its position regarding wind farm transmission lines (TxLs), and seeks your support for better coordination of TxL design and routes.

Council submits that the State Government immediately make changes to the Victorian regulatory and planning framework, in order to manage the future planning and development of wind farm TxLs.

Council is concerned that without urgent and important planning and regulatory changes being made in Victoria, the future construction and potential duplication of TxLs associated with wind farms within Moyne Shire and across regional Victoria, will occur in an unregulated manner and with an undue impact on local communities.

On 12 June 2018, Moyne Shire Council held a Wind Farm Transmission Line (TxL) workshop with representatives from approved and proposed wind farm projects within the municipality, along with the Australian Energy Market Operator (AEMO), Ausnet Services and the Department of Environment, Land Water and Planning (DELWP).

The TxL workshop was arranged by Council in response to its recent negative experience in relation to the construction of the Salt Creek Wind Farm (SCWF) TxL, and a proposed separate TxL for the Mortlake South Wind Farm (MSWF).

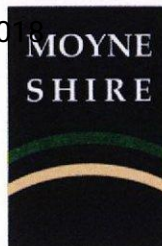
At its 26 June 2018 Ordinary Council Meeting, it was resolved:

"That Council:

- 1. Write to the Minister for Planning requesting that the State Government immediately make changes to the Victorian Regulatory and Planning Frameworks, in order to manage the future planning and development of wind farm transmission lines.*
- 2. Write to Rural Councils Victoria, the Municipal Association of Victoria, the National Wind Farm Commissioner and the Clean Energy Council expressing Council's position in advocating for changes to be made to the Victorian regulatory and planning frameworks, to ensure better management of the future planning and development of wind farm transmission lines.*
- 3. Notify other local governments where renewable energy projects are proposed, and seek their support for Council's position regarding better coordination of transmission line design routes.'*

Construction of the 50 km-long SCWF TxL in late 2017/early 2018 resulted in a negative experience for Council and its local communities.

yourshire



Conclusion

Wind farm TxLs are significant pieces of infrastructure which generally fall outside of the regulatory control of Council and the State Government regarding their planning and development.

Council advocates that without changes to the planning and regulatory framework within Victoria, future wind farm TxLs will have an undue impact within Moyne Shire and across the State.

Should you have any questions regarding this matter, please contact Oliver Moles, Director Sustainable Development, on 5568 0555 or by email at omoles@moyne.vic.gov.au

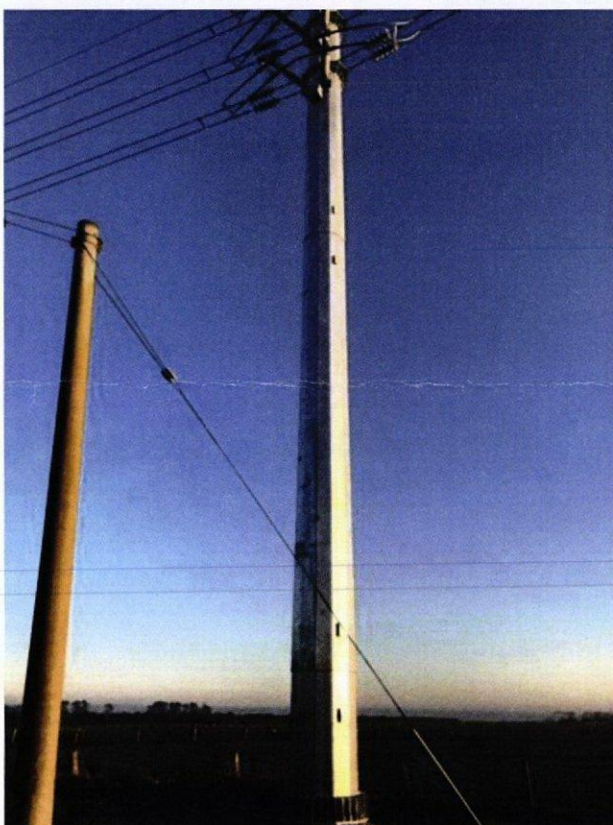
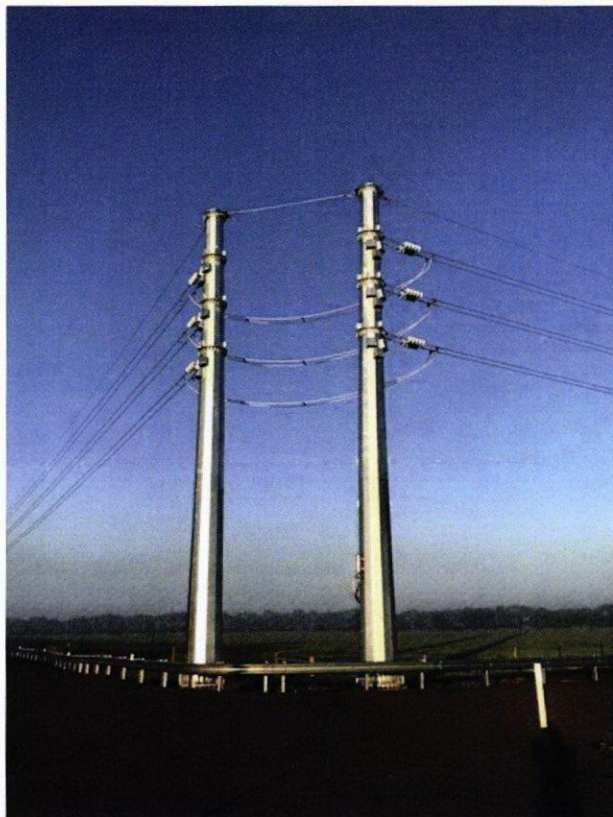
Kind regards,

A handwritten signature in black ink, appearing to read "Mick Wolfe".

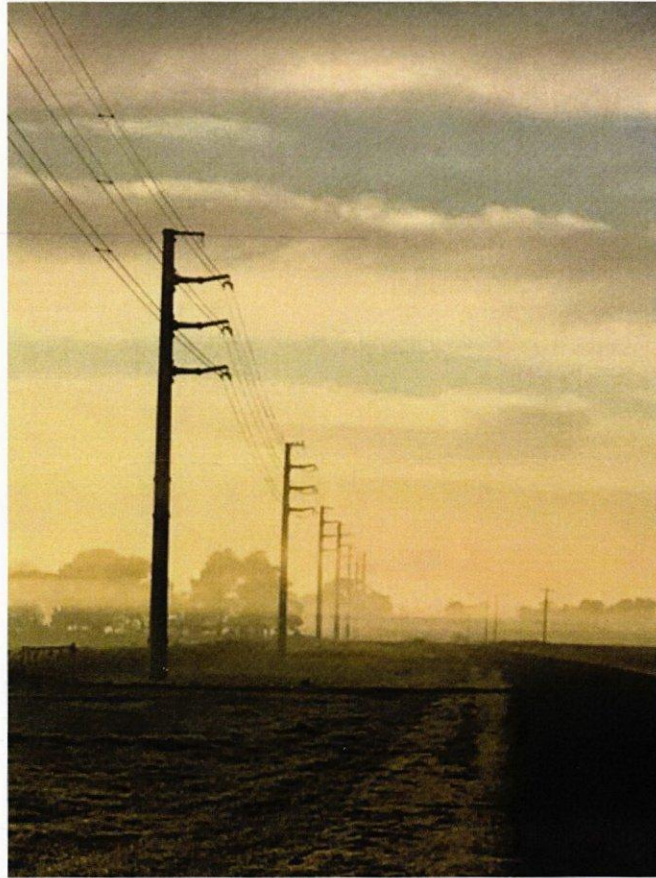
Cr Mick Wolfe
Mayor

*your*shire

Salt Creek Wind Farm – Transmission Line photos



Salt Creek Wind Farm – Transmission Line photos



Salt Creek Wind Farm – Transmission Line photos



Salt Creek Wind Farm – Transmission Line photos

